

A Taste of the South

This 8 day scenic route will give you a wonderful 'taste' of the South Island's beauty and diversity. Visit its two largest cities, Christchurch and Dunedin, Mt Cook National Park and Te Anau the gateway to Fiordland National Park. You then experience the excitement of Queenstown before heading north to the unique West Coast Glacier region. The finale to this tour is crossing the Southern Alps on board the TranzAlpine Scenic Train as you return to Christchurch.

Starts in: Christchurch
 Finishes in: Christchurch
 Length: 8days / 7nights
 Accommodation: Hotel 3 star
 Can be customised: Yes

This itinerary can be customised to suit you perfectly. We can add more days, remove days, change accommodations, mix it up, add activities to suit your interests or simply design and create something from scratch. Call us today to get your custom New Zealand itinerary underway.



Inclusions:

Includes: Late model rental cars

Includes: Unlimited kms

Includes: Airport & ferry terminal rental car fees

Includes: Comprehensive tour pack (detailed itinerary, driving instructions, map/guidebooks, brochures)

Included activity: Private transfer Christchurch International Airport to your accommodation

Included activity: TranzAlpine Scenic Train: Greymouth to Christchurch

Included activity: Private transfer accommodation to Christchurch Airport

Includes: Fully inclusive rental car insurance (excess may apply)

Includes: GPS navigation

Includes: Additional drivers

Includes: 24/7 support while touring New Zealand

Included activity: Electronic Travel Guide and In-Country Support App

Included activity: Shared Transfer from the Railway Station to a City Hotel with Christchurch Touring Company

: Meals included: 7 breakfasts

Day 1



Private transfer Christchurch International Airport to your accommodation

On arrival, you will be met by a private driver and transferred to your Christchurch accommodation.

Welcome to Christchurch City

Christchurch New Zealand's garden city is steadily being transformed into a vibrant urban destination. Encompassing a large green belt, it is known for its wide tree lined avenues and lush gardens. A great way to explore the city or easy way to see the sights or ride the historic trams across town to the renowned botanic gardens and the unique cardboard Transitional Cathedral, that's right it is built of cardboard!

SUGGESTED ACTIVITY - Discover Christchurch Afternoon Tour

A half day sightseeing tour of Christchurch highlighting both the damage to the city inflicted by several large earthquakes in 2010 and 2011 and the rebuild which is currently in progress, together with the surviving beauty of the city and the historical landmarks. Experience the grand architecture, beautiful gardens and scenic viewpoints on a half-day city tour of Christchurch.

The tour commences in the central city of Christchurch and covers the area which was completely devastated by the Christchurch earthquakes in February 2011. The guide will explain both the history of the city and the effects of the earthquake. On leaving the inner city, the tour travels to Mona Vale a historic homestead and gardens. Then you will travel to the Sign of the Takahe, a historic building with a lookout providing spectacular views over the city, Canterbury Plains and to the Southern Alps. The tour then travels via the Port Hills and Lyttelton Harbour by way of the Sign of the Kiwi and Governors Bay to the Port of Lyttelton. The tour proceeds through the Lyttelton harbour tunnel to the seaside suburb of Sumner and cave rock before returning to the central city where the tour will conclude.

Your accommodation: Scenic Hotel Cotswold

The Scenic Hotel Cotswold is just a few minutes walk to boutique shopping at Merivale and Hagley Park. The distinctive architecture of the Scenic Hotel Cotswold reflects Christchurch's image as the most English of cities outside of England.



Day 2



Collect your rental car

This tour can be priced with any of the rental cars available in our fantastic range, from economy hatchbacks to prestige saloons and SUV's.

Christchurch to Twizel (via Aoraki Mt Cook National Park)

Today you head into the heart of the South Island. Crossing the vast Canterbury Plains along the inland scenic route, Geraldine offers an ideal stop before you head into Mackenzie country. Ascending Burkes Pass, you'll enter New Zealand's high country. The picturesque town of Lake Tekapo, is the first of the large Southern Lakes on your journey. Enjoy the magnificent views from the shore, boat or air by taking a scenic flight. On arriving at Lake Pukaki, you'll be rewarded with a spectacular views of Aoraki Mt Cook, towering over the lake. Driving along the lake, you'll find your destination, Mt Cook Village. Enjoy Aoraki Mt Cook National Park by having a glacier landing with ski plane or helicopter, kayaking on a glacial lake or by walking one of the many tracks. At The Hermitage Hotel the Sir Edmund Hillary Centre is a must see. Return along the shores of Lake Pukaki to Twizel, your base for the evening.

SUGGESTED ACTIVITY - Sir Edmund Hillary Alpine Centre Museum and Theatre Explorer Pass

A tribute to New Zealand's Sir Edmund Hillary, a humanitarian, ambassador, and one of the world's greatest explorers. The centre showcases the Aoraki Mount Cook region, the history of climbing, and early transport used throughout the region. This comprehensive museum details the life of Sir Edmund Hillary, the Hermitage, and provides access to the 126-seat custom-designed theatre. Check out the daily film schedule which includes 3D Movies, documentaries, and 360-degree digital dome features.

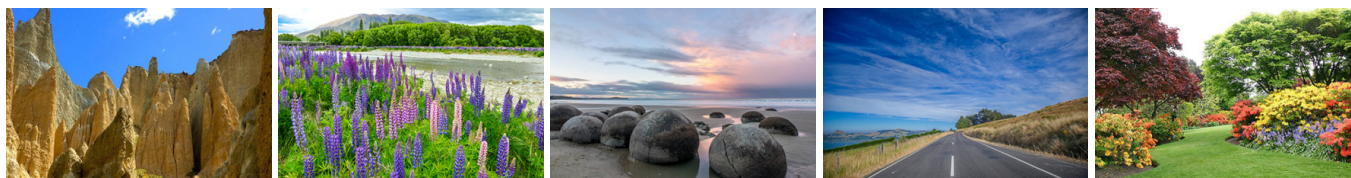
Your accommodation: Distinction MacKenzie Country Hotel, Twizel

Located in the heart of the Mackenzie region the hotel's natural stone architecture compliments the mountains and rivers of New Zealand's Southern Alps. With 108 well equipped rooms the hotel can offer every facility needed for a comfortable stay.

Meals included: Breakfast



Day 3



Twizel to Dunedin

The next town south is Oamaru and the Wrinkly Rams cafe makes an interesting coffee stop. Heading down the Waitaki valley, from Oamaru, you follow the hydro power generating system towards the east coast. The town of Oamaru is most famous for its white stone buildings, constructed with the local 'Oamaru Stone'. From the harbour, you can see blue penguins come ashore at dusk as they return from their day at sea. Further south the Moeraki Boulders are a unique geological feature and worth the short detour to the beach to view. Arriving into Dunedin, you can appreciate the city's Edwardian and Scottish heritage through its fine buildings particularly around the Octagon.

SUGGESTED ACTIVITY - Larnach Castle and Gardens

Larnach is New Zealand's only Castle, built in 1871 by politician and merchant, William Larnach, a man of great vision who helped shape New Zealand's early history. It was built for William's beloved first wife Eliza; it took 200 workmen three years to build the shell and a further twelve years were spent by master craftsmen to embellish the interior. The Castle is located high up on the Otago Peninsula and looks down on Dunedin city giving beautiful views. The gardens have an International Garden of Significance status and have a unique collection of antiques, including a unique nine piece Totara knot suite. The Ballroom cafe is a fantastic place to rest and reflect on all you have seen while enjoying a delicious range of refreshments. As with the entire castle, the ballroom had an interesting and varied history prior to its beautiful restoration, uses ranged from an asylum, antique sales room to the penning of sheep. In this self guided exploration of the castle and gardens, you are free to discover on your own.

Your accommodation: Dunedin Leisure Lodge – A Distinction Hotel

Nestled in landscaped gardens, the Heritage Dunedin Leisure Lodge is located within two acres of beautifully kept garden, and just a short drive to the city centre.

Meals included: Breakfast



Day 4



Dunedin to Te Anau

The drive to Te Anau takes you through classic Southland farming scenery. Head off-the-beaten-track today and follow the coastline instead of the inland route. Go through The Catlins area and be sure to take a detour to Kaka Point to view its majestic cliffs and pounding surf. Continue through Invercargill to Riverton and Colac Bay, and then head north to Manapouri. From here you can embark on a day or overnight cruise to the remote Doubtful Sound, renowned for its natural beauty. Just a short way further will bring you to your lakeside destination of Te Anau, gateway to Fiordland National Park and Milford Sound.

SUGGESTED ACTIVITY - Te Anau Glowworm Caves with RealNZ

Begin your Te Anau Glowworm experience with a scenic cruise across Lake Te Anau on board the luxury catamaran, Luminosa, to the western side of the lake. On arrival, you'll enter the caves through Cavern House, where informative displays detail the history of this 12,000 year old underground network.

You'll then explore by limestone pathway while your guide points out hidden whirlpools, sculpted rock formations and a rushing underground waterfall. See a magical display of thousands of glowworms as you glide through the darkness in a small boat.

Your accommodation: Distinction Luxmore Hotel

The perfect base for all your Fiordland travel, Distinction Luxmore Hotel provides comfortable accommodation right in the heart of Te Anau.

Meals included: Breakfast



Day 5



Te Anau to Queenstown

Today you'll cross vast tussock lands on your way to Queenstown. Pass through Mossburn, the deer capital of the nation. Continue on through the Southland countryside where the road begins to hug the lake edge and the Remarkables mountain range towers over your approach into the adventure capital of New Zealand.

SUGGESTED ACTIVITY - Shotover Canyon River Jet Boat Adventure

Riding the iconic 'Big Red' Jet Boat through the narrow Shotover Canyon is an exhilarating experience not to be missed. Your skilled jet boat driver pushes the boat to 85 kph, skimming across shallow water and past towering canyon walls. This 25 minute white water ride includes 360 degree spins and maximum thrills.

SUGGESTED ACTIVITY - TSS Earnslaw cruise to Walter Peak including gourmet BBQ dinner and a farm tour

Enjoy a quintessential Kiwi experience, a delicious gourmet BBQ buffet meal and a farm demonstration in a stunning lakeside setting. Take in the stunning views of Lake Wakatipu and its surroundings as you cruise across the lake to the historic Walter Peak high country farm aboard the TSS Earnslaw Steamship.

Enjoy the ambience of the heart of the stately homestead while your Colonel's Homestead Restaurant chef prepares a gourmet BBQ dinner. Your seasonal menu includes an extensive selection of local New Zealand produce, including succulent meats and a selection of delicious vegetables and salads. Complete your meal with your choice of delicious desserts, New Zealand cheeses, tea and coffee.

After dinner, watch the farm dogs in action with a sheep-herding demonstration and say hello to the other farm animals. Finally, cruise home under the southern stars and enjoy the fresh night air as the lights of Queenstown draw ever closer.

Your accommodation: Ramada Hotel & Suites Queenstown Central

Ramada Hotel & Suites offers well-appointed apartment-style rooms located in the heart of Queenstown. Experience tranquillity all year round, overlooking the shores of Lake Wakatipu and within walking distance of Queenstown's central shopping and entertainment area.

Meals included: Breakfast



Day 6



Queenstown to Fox Glacier

Crossing the Crown Range the highest sealed road in the country, you'll pass through the alpine town of Wanaka. Following the shores of both Lake Wanaka and Hawea, you'll enter the township of Makarora, gateway to Mt. Aspiring National Park. Stretch your legs on a walk to Blue Pools, a ten minute stroll through lush rainforest. Marvel at the native beech and countless waterfalls as you continue toward the West Coast.

Crossing the Haast River you are now truly in the wild west, a 600 kilometre stretch of bush, rainforest and podocarp forest. Continue on to arrive in Fox Glacier, your destination for the night. Home to the largest glacier on the west coast, Fox is 13 kilometres long and ends in rainforest only 250 metres above sea level.

SUGGESTED ACTIVITY - Twin Glacier Scenic Helicopter Flight with The Helicopter Line

Explore the glacial icefalls of not one but two glaciers - Fox Glacier and Franz Josef Glacier. Discover up close their neve and unusual ice formations - landing on the snowfields is a highlight and will make for superb photos, snowballs and memories. A 30 minute flight with snow landing. Should weather not be suitable to take this flight you are able to transfer your booking onto a similar tour on any of the Helicopter Line's operations in Queenstown or Mt Cook.

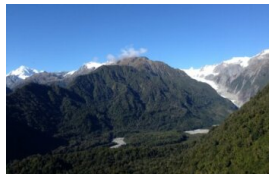
Your accommodation: Heartland Hotel Fox Glacier

The Heartland Hotel Fox Glacier is nestled at the base of the majestic Southern Alps, in the Westland World Heritage Park. Originally built in 1928 it has been refurbished to retain its charming atmosphere.

Meals included: Breakfast



Day 7



Fox Glacier to Greymouth Train Station

The drive north from Fox and Franz Josef takes you through the historic gold mining region of Ross and the town of Hokitika, a great place to explore the craft stores, in particular the jade or greenstone. The largest town on the West Coast, Greymouth is also the starting point for the TranzAlpine Scenic Train. Drop your rental car at the Greymouth Train Station depot located inside the train station building.

TranzAlpine Scenic Train: Greymouth to Christchurch

Considered one of the world's great train journeys, the TranzAlpine Scenic Train takes you from Greymouth to Christchurch. You'll travel across the South Island from the west to the east coast through Arthur's Pass National Park. From the comfort of your carriage see lush beech forest, deep river valleys and the spectacular peaks of the Southern Alps. Descend to the windswept Canterbury Plains before arriving in the city of Christchurch.

Shared Transfer from the Railway Station to a City Hotel with Christchurch Touring

On arrival at the Christchurch railway station, you will be met by a driver and transferred to your Christchurch accommodation.

SUGGESTED ACTIVITY - TranzAlpine Scenic Plus Addon - KiwiRail

Feel like luxurious service, exclusive meals, inclusive drinks and priority check in and boarding? The Scenic Plus add-on option is for you. Enjoy personal service with panoramic windows, spacious carriages and comfortable seating. The exclusive open-air viewing carriage is available if you feel like capturing the ultimate photo or simply wish to experience the great outdoors whilst travelling through the Southern Alps. Your food is prepared exclusively in a kitchen carriage, with paired drinks and a paddock to plate regionally inspired food menu all your senses will be fully engaged on this journey.

Your accommodation: Scenic Hotel Cotswold

The Scenic Hotel Cotswold is just a few minutes walk to boutique shopping at Merivale and Hagley Park. The distinctive architecture of the Scenic Hotel Cotswold reflects Christchurch's image as the most English of cities outside of England.

Meals included: Breakfast



Day 8



Private transfer accommodation to Christchurch Airport

A private transfer will collect you from your accommodation and transfer you to Christchurch Airport in time for your departing flight.

Tour details

Departures:	Daily
Tour type:	South Island Self Drive
Starts:	Christchurch
Finishes:	Christchurch
Tour length:	8
Accommodation:	Hotel 3 star
Car/transport type:	

Included activities

Includes	7 breakfasts
Includes	Private airport transfers
Includes	Private train station transfers
Includes	TranzAlpine Train from Greymouth to Christchurch

Accommodation summary

Day 1	Scenic Hotel Cotswold
Day 2	Distinction MacKenzie Country Hotel, Twizel
Day 3	Dunedin Leisure Lodge – A Distinction Hotel
Day 4	Distinction Luxmore Hotel
Day 5	Ramada Hotel & Suites Queenstown Central
Day 6	Heartland Hotel Fox Glacier
Day 7	Scenic Hotel Cotswold