

## South Island Coastal Self Drive tour

Begin this breathtaking journey starting with stunning views of the Pacific Ocean as you travel south from Christchurch. In Dunedin, explore the Otago Peninsula, renowned for its abundant wildlife. Continue along the scenic Catlins coastline to the southernmost tip of the South Island. On the western side, experience highlights such as a nature cruise through the iconic Milford Sound, the spectacular West Coast Road skirting the Tasman Sea, and the extraordinary Punakaiki Pancake Rocks. Conclude your adventure at the top of the South Island, where you'll discover the tranquil aqua waters of Abel Tasman National Park and the serene Marlborough Sounds before returning to Christchurch.

Starts in: Christchurch  
 Finishes in: Christchurch  
 Length: 14days / 13nights  
 Accommodation: Motels  
 Can be customised: Yes

This itinerary can be customised to suit you perfectly. We can add more days, remove days, change accommodations, mix it up, add activities to suit your interests or simply design and create something from scratch. Call us today to get your custom New Zealand itinerary underway.



### Inclusions:

Includes: Late model rental cars  
 Includes: Fully inclusive rental car insurance (excess may apply)  
 Includes: Unlimited kms  
 Includes: Afterhours emergency support while touring  
 Included activity: Private Transfer Christchurch International Airport to Christchurch Accommodation  
 Included activity: Electronic Travel Guide and In-Country Support App  
 Included activity: The Visitor Promise - Cultural Learning Course  
 Included activity: Taieri Gorge Railway Scenic Train  
 Included activity: Te Anau Glowworm Caves with RealNZ  
 Included activity: Milford Sound Cruise with Real NZ - Lunch Included  
 Included activity: TSS Earnslaw Cruise and Walter Peak Gourmet BBQ Dinner  
 1 lunch, 1 special dinner

## Day 1



### Private Transfer Christchurch International Airport to Christchurch Accommodation

On arrival, you will be met by a private driver and transferred to your Christchurch accommodation.

### Welcome to Ōtautahi / Christchurch

Kia ora and welcome to Aotearoa, New Zealand. After checking into your accommodation, the rest of the day is yours to explore at your leisure. Christchurch, known in Māori as Ōtautahi, is the largest city on the South Island. Often referred to as the Garden City it boasts one of the largest public parks in the country and the city centre is full of very impressive stone buildings reminiscent of the English university towns. The inner city has almost been completely rebuilt following earthquakes in 2010 and 2011. Explore the city and see how the old mixes with New Zealand's "newest" city.

### SUGGESTED ACTIVITY - Discover Christchurch Afternoon Tour with Leisure Tours

A half-day sightseeing tour of Christchurch highlighting both the damage to the city inflicted by several large earthquakes in 2010 and 2011 and the rebuild which is currently in progress, together with the surviving beauty of the city and the historical landmarks. Experience the grand architecture, beautiful gardens, and scenic viewpoints on a half-day city tour of Christchurch.

### Your accommodation: Bella Vista Christchurch

Bella Vista Motel Christchurch offers a great range of comfortable modern units with excellent facilities. Enjoy the convenience of being located in close proximity to the Christchurch CBD, shops, entertainment and other activities.



## Day 2



### Collect Rental Car

This tour's from price includes an intermediate-sized vehicle, setting you up for comfortable travels. Yet, we understand every adventure is unique! Feel free to select the perfect wheels from our incredible collection of rental cars, spanning from economy hatchbacks to premium SUVs.

### Christchurch to Dunedin

Crossing the vast Canterbury Plains you'll head South on State Highway one, traversing many braided rivers that start their life as glacial melt water high in the Southern Alps. Go over New Zealand's longest bridge at Rakaia and onwards through Timaru.

Stretch your legs in Oamaru, known for its white stone buildings constructed with the local Oamaru Stone. If you were a little late off the mark this morning you may get the chance to see the local blue penguins come ashore at dusk. Continue down the coast to Moeraki, and take a detour towards the beach to see the Moeraki Boulders, a unique geological feature and well worth the look.

As you arrive in Dunedin, take in the city's Edwardian and Scottish heritage reflected in the buildings around the city centre The Octagon.

### Dunedin

Dunedin, known in Māori as Ōtepoti, is referred to as the "Edinburgh of the Southern Hemisphere". The city has a rightly deserved reputation as one of the best-preserved Victorian and Edwardian cities in the Southern Hemisphere. Of particular note is Dunedin Railway Station, built 1904 - 1906, and St Paul's Cathedral in the Octagon. The Otago Museum is renowned for its Māori and Pacific Island collections and natural history displays. A visit to the Speights, New Zealand's oldest brewery, is also considered a must while in Dunedin. The Botanic Gardens is a great spot and at the right time of year, you can witness the Rhododendron Dell in bloom. The Otago Peninsula is the only home in the world to the Northern Royal Albatross. The Peninsula can be visited for the day from Dunedin and the stunning harbor landscape and wildlife are worth exploring. High among the rolling hills of the Peninsula is Larnach Castle, the grand home of an early politician. Construction of the castle began in 1871 and was completed 12 years later. From here, views out to sea and back towards the city emphasize the singular beauty of Dunedin and its jewel-like harbor.

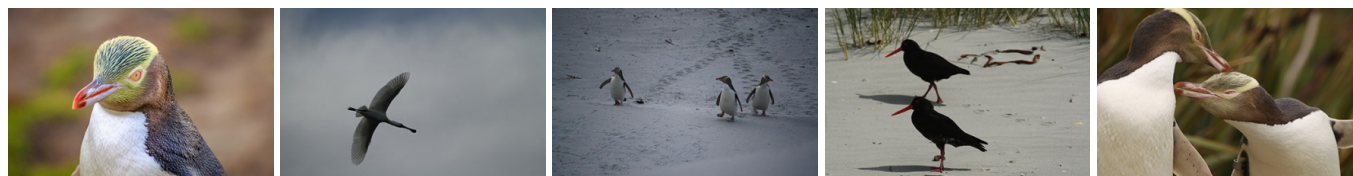
### Your accommodation: Motel on York

Motel on York is located in the heart of Dunedin city. The property offers superior accommodation only 300 metres away from cafes and restaurants.



---

## Day 3



### SUGGESTED ACTIVITY - Penguin Tour with The Opera

Learn about the endangered Yellow Eyed Penguin when you visit The Opera - Otago Peninsula Eco Restoration Alliance, a private conservation reserve dedicated to ensuring the survival of this unique species. The project is entirely funded by guided tours which allow the conservation team to engage in habitat restoration, predator control, a research program, and an on-site rehabilitation facility.

On your tour, you will learn about the issues the Yellow Eyed Penguin faces, their life cycle, and how the project is carried out. Your experience will begin in a theatre before moving to the rehabilitation center where penguins may be seen up close. You'll take a short bus trip over to the reserve and be led on foot approx 2km by your guide through a system of covered trenches to view hides that allow access to the living and breeding habitat of this very shy bird without disturbing them. There is also an opportunity to meet other animals that reside in the reserve including fur seals, sea lions, and several species of shore and land birds.

---

### Taieri Gorge Railway Scenic Train

Experience the breathtaking Taieri Gorge on Dunedin's iconic scenic train journey! Travel through stunning Otago landscapes, marvel at the engineering feats of the historic Taieri Gorge Railway, and hear captivating stories of the region's past from our onboard commentary. See the majestic Wingatui Viaduct, the tallest wrought iron structure in Australasia, and explore hand-carved tunnels. Enjoy comfortable, all-weather travel with onboard refreshments and photo stops. Choose a return trip from Dunedin's historic Railway Station or opt for a one-way journey to Pukerangi. Escape the digital world and reconnect with nature on this unforgettable New Zealand rail experience.

---

### Your accommodation: Motel on York

Motel on York is located in the heart of Dunedin city. The property offers superior accommodation only 300 metres away from cafes and restaurants.



---

## Day 4



### Dunedin to Invercargill via the Southern Scenic Route

The scenic route from Dunedin to Invercargill takes you via the Southern Scenic Route. Well signposted from Dunedin the route takes you along the rugged Otago coastline and its many secluded beaches and bays and many are great places to spot New Zealand fur seals and sea lions. At Nugget Point, penguins and elephant seals can also be spotted. Curio Bay is home to a 160 million year old fossilised forest. Get an early start for this drive as you can easily pass the whole day exploring the many attractions along the Southern Scenic Route.



## Invercargill

Invercargill is the southernmost city in New Zealand and one of the most southern in the world. On the southern scenic route, Invercargill is the gateway to Southland, the Catlins district, and Stewart Island. Early pioneers settled here to establish a flax industry however it was the rich plains that brought prosperity to the city as the settlers turned to farming. There are some impressive buildings including the city's water tower. The Southland Museum is worth a visit, which houses a state-of-the-art tuatara house. These creatures are unique to New Zealand and date back to the age of dinosaurs.

Invercargill is a lively city with plenty of restaurants, shops, galleries, and attractions. It seems like the town is obsessed with anything that has wheels. You can visit Transport World, celebrate the town's motorcycle history at Classic Motorcycle Mecca, and learn about the legend of speed - Burt Munro at E-Hayes Motorworks. Alternatively, you can try making chocolate at the Seriously Good Chocolate Company.

### Your accommodation: The Lodges At Transport World

Offering six boutique apartment units that are unique, spacious and packed full of supreme comfort. The perfect accommodation option if you looking for a sanctuary to relax and recharge. The permanent onsite managers provide a warm and welcoming atmosphere and ensure every guest receives superb personal attention. Easy to find The Lodges At Transport World are conveniently located directly across the road from Bill Richardson Transport World.



## Day 5



### Invercargill to Te Anau via Southern Scenic Route

Taking the Southern Scenic Route the drive from Invercargill to Te Anau passes through some wonderful and often overlooked regions of Southland. Riverton is Southland's oldest community established by whalers in the 1830's and many of the original cottages have survived throughout the town. The Riverton Early Settlers Museum tells the story well. Orepuki on the coast was once 'almost' a gold town but the fine dust proved too hard to extract commercially. You can still sometimes see gold dust in the beach sand at Monkey Bay. The early sawmilling settlement of Tautapere is next. Known as the 'hole in the bush' the town features an attractive domain. A little further north is the Clifden suspension bridge which dates back to 1899. The Blackmount Road offers some great side trips if you have the time and one in particular is the 50 kilometre round trip to Lake Haruoko, New Zealand's deepest lake. The Blackmount Road continues to the small township of Manapouri, the departure point for cruises to Doubtful Sound. Te Anau the gateway to Milford Sound is just a further 20 kilometres north.

### Te Anau

It is the gateway to Fiordland National Park and a perfect base to visit Piopiotahi-Milford Sound. The Milford Road originates here, and this is arguably one of the most scenic stretches of highway in the country. Te Anau sits on the shores of spectacular Lake Te Anau, which reaches depths of 417 meters. Te Anau Township is the starting point for many walking tracks, including two of New Zealand's Great Walks, the Milford track and the Kepler track. Apart from hiking, you could go kayaking, lake cruising, fishing, or exploring Te Anau Glowworm Caves. You could go for a bike ride alongside the lake towards Lake Manapouri, on a popular Lake to Lake biking route. Along the way, you will pass a bird sanctuary specialising in Takahe, and other native birds.

### Te Anau Glowworm Caves with RealNZ

Begin your Te Anau Glowworm experience with a scenic cruise across Lake Te Anau on board the luxury catamaran, Luminosa, to the western side of the lake. On arrival, you'll enter the caves through Cavern House, where informative displays detail the history of this 12,000 year old underground network. You'll then explore by limestone pathway while your guide points out hidden whirlpools, sculpted rock formations, and a rushing underground waterfall. See a magical display of thousands of glowworms as you glide through the darkness in a small boat.

### Your accommodation: Lakefront Lodge

Stylish self-contained motel units less than a minute walk from Te Anau Lakefront. Enjoy a close walk to shops, cafes and restaurants.



## Day 6



### Te Anau to Milford Sound, returning to Te Anau

The magnificent Milford Road leading to Milford Sound offers some of the most beautiful and iconic scenery in the country. Countless photo opportunities mean this drive should not be rushed. From crystal clear lakes and towering mountains to lush glacier-formed meadows, this area is abundant with picture-perfect scenes. Continue on through the Homer Tunnel, an engineering marvel at 1219 meters long. Arriving in the village of Milford, you will be greeted with an amazing view of Mitre Peak. A day cruise into the heart of the sound is not to be missed. You'll learn about how this magnificent area was formed and experience the wonder of the falls that line the Fjord before back-tracking the way you came.

### Milford Sound

Milford Sound is the best known of the sounds that lie throughout Fiordland National Park and is also the only fiord accessible by road. The Milford Road starting in Te Anau is considered one of the finest scenic drives in the world. Stunning alpine scenery and the famous Homer Tunnel make this road a journey in itself. Allow plenty of time to fully enjoy the drive.

Milford Sound is nestled within Fiordland National Park, it is a breathtaking natural wonder featuring dramatic cliffs, cascading waterfalls, and serene waters. Often called the "eighth wonder of the world," this iconic destination offers unforgettable experiences, from scenic cruises to kayaking amidst its tranquil beauty. Surrounded by lush rainforests and teeming with wildlife, including seals, dolphins, and penguins, Milford Sound is a must-see for every traveler seeking the essence of New Zealand's majestic landscapes.

### Milford Sound Cruise with Real NZ - Lunch Included

Get up close and personal with Milford Sound on a leisurely cruise of this spectacular fiord. From thundering waterfalls to sky-high mountains to lush rainforests, Milford has it all. Experience the spray of a waterfall as you cruise close to sheer rock faces. Informative, participative, and relaxed, this is the perfect way to experience Milford Sound to the fullest. It is important you read and understand the risks associated with this activity. For more information, see [here](#).

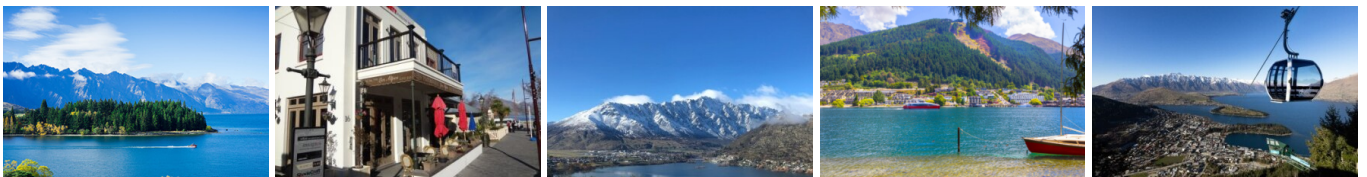
### Your accommodation: Lakefront Lodge

Stylish self-contained motel units less than a minute walk from Te Anau Lakefront. Enjoy a close walk to shops, cafes and restaurants.

Meals included:            Lunch



## Day 7



### Te Anau to Queenstown

Journey across expansive tussock lands en route to Queenstown. Pass through Mossburn, renowned as the deer capital of New Zealand, and continue through the picturesque Southland countryside. As the road begins to trace the edge of Lake Wakatipu, marvel at the breathtaking views from the Devil's Staircase. Finally, approach Queenstown, the adventure capital of New Zealand, with the Remarkables mountain range standing majestically in the backdrop.

## Queenstown

Queenstown known in Māori as Tāhuna, is home to many adrenaline-inducing activities. Nestled on the shores of Lake Wakatipu, this alpine town has very distinct seasons, and most adrenaline-filled activities can be accessed year-round. Queenstown is home to jet boating, bungy jumping, rafting, skydiving, paragliding, and even indoor thrills. If you want that rush - head out on the Shotover Jet, dive off the Nevis Bungy, freefall on the Canyon Swing, or Zip line the Gondola. While arguably the brightest gem in New Zealand's crown, Queenstown offers far more than an action-packed getaway. If you're looking for a slightly slower pace, there are plenty of recreational activities, including hiking and biking trails to explore, guided tours, boat cruises, scenic flights, or spa and wellness options to help you get away. Head to the lakefront, eat at one of the al fresco eateries, and soak up the local vibes; catch a ride on the iconic 100-year-old steamship the TSS Earnslaw; or take the Skyline Gondola and enjoy bird's-eye views of the Remarkables mountain ranges and Lake Wakatipu. Pack a picnic and go for a hike, only 20 minutes from Central Queenstown, Coronet Peak opens for summer sightseeing. You can ride the Peak Gondola to the top for panoramic views and hike the trails, or go for a bike ride on many excellent biking trails. In winter, Queenstown becomes a world-class winter resort, with four ski areas and a range of activities, bars, restaurants, and ways to relax and unwind.&nbsp;

---

### SUGGESTED ACTIVITY - Shotover Jet Canyon Jet Boat Ride

Shotover Jet is the only company permitted to operate in the Shotover River Canyons. It's a thrilling ride! Skim past rocky outcrops at close range in your Shotover Jet 'Big Red', as you twist and turn through the narrow canyons at breathtaking speeds. And a major highlight - hold tight for the world-famous Shotover Jet full 360-degree spins! It is important you read and understand the risks associated with this activity. For more information please see [here](#).

---

### TSS Earnslaw Cruise and Walter Peak Gourmet BBQ Dinner

Enjoy a quintessential Kiwi experience, a delicious gourmet BBQ buffet meal, and a farm demonstration in a stunning lakeside setting. Take in the stunning views of Lake Wakatipu and its surroundings as you cruise across the lake to the historic Walter Peak high country farm aboard the TSS Earnslaw Steamship. Enjoy the ambiance of the heart of the stately homestead while your Colonel's Homestead Restaurant chef prepares a gourmet BBQ dinner. Your seasonal menu includes an extensive selection of local New Zealand produce, including succulent meats and a selection of delicious vegetables and salads. Complete your meal with your choice of delicious desserts, or New Zealand cheeses. After dinner, watch the farm dogs in action with a sheep-herding demonstration and say hello to the other farm animals. Finally, cruise home under the southern stars and enjoy the fresh night air as the lights of Queenstown draw ever closer.

---

### Your accommodation: Scenic Suites Queenstown

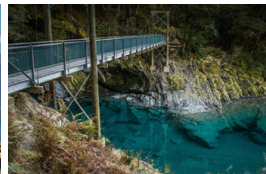
Scenic Suites Queenstown offers guests exquisite style and comfort, with a selection of rooms having spectacular views over Lake Wakatipu and the Southern Alps. The hotel prides itself on its 4-star hospitality that will make your stay in Queenstown even more memorable.

Meals included:           Speciality Dinner



---

## Day 8



### Queenstown to Franz Josef Glacier via Wānaka

From Queenstown you'll cross the Crown Range, the highest sealed road in New Zealand to arrive in the Alpine town of Wānaka, gateway to Mt Aspiring National Park. Skirting the shores of both Lake Wanaka and Hawea, you will enter the small town of Makarora. Stop at Blue Pools for a 1-hour return walk through the native beech forest to a glacier-fed swimming hole. Continue on through the remote seaside settlement of Haast before heading up the wild West Coast highway you pass through ancient temperate rainforests while getting sneak peeks of the wild coast beaches occasionally. Keep heading North and be sure to enjoy the view of the ever-changing towering snowcapped Southern Alps Mountain Range. Fox Glacier welcomes you first, then comes your destination for the night Franz Josef township.

---

### SUGGESTED ACTIVITY - Twin Glacier Scenic Helicopter Flight with The Helicopter Line

A spectacular scenic flight soaring over two of New Zealand's most famous glaciers, Fox and Franz Josef. Landing at the head of one and view the incredible sight of this frozen river as it winds its way through ancient carved valleys. It is important to read and understand the risks associated with this activity. A full risk disclosure can be found [here](#).



## Franz Josef

Franz Josef, named after both the local village and the nearby glacier, holds special significance in Māori culture as "Ko Roimata o Hine Hukatere" – The Tears of the Ice Maiden. This rare glacier is one of only three in the world that descends from alpine heights into a temperate rainforest, almost reaching sea level. New Zealand is home to two of these unique glaciers, Franz Josef and Fox Glacier, both highly accessible and popular with visitors. The best ways to experience the glacier are through scenic flights or, for the adventurous, a heli-hike. You can also enjoy glacier views with a short drive from the village and walking tracks. Beyond the glacier, Franz Josef offers a wealth of adventure activities and beautiful forest and alpine walks, making it a must-visit destination.

---

### Your accommodation: Bella Vista Franz Josef

From the moment you arrive at Bella Vista Franz Josef, you'll enjoy the convenience of being located in close proximity to shops, restaurants and other activities, as well as being a short walk to the Glacier Hot Pools. Franz Josef village is the perfect place to stay when exploring New Zealand's glaciers.



---

## Day 9



### Franz Josef to Punakaiki

Driving north on State Highway 6, you pass through many small West Coast towns. Hari Hari is the township that Guy Menzies decided to land in (or rather crash land) as he became the first person to fly solo across the Tasman. Ross is the site of an old gold mining town, and some of the old buildings remain. You can even pan for gold. The craft and gift stores in Hokitika are excellent, with a great range of locally made items, and if you want to explore further here then the Hokitika Gorge is worthy of a 50-minute detour.

Just south of Greymouth is Shantytown, a replica gold rush town with lots of great displays from yesteryear. Be sure to stop at the supermarket in Greymouth as there is none in Punakaiki. Punakaiki is a highlight of this drive, so allow plenty of time to walk the paths and explore the Pancake Rocks.&nbsp;

---

### Your accommodation: Punakaiki Treehouse

The Punakaiki Treehouse is situated in 3 hectares of NZ native bush and is located 3.2km North of the Punakaiki Pancake rocks.



---

## Day 10



### Punakaiki to Nelson

Heading North a worthwhile divert is to Cape Foulwind just south of Westport. Home to a seal colony and the short walk provides some spectacular scenery. Driving along the Buller Gorge enjoy some wonderful scenery as you follow this magnificent river.

The first major town (by this regions standard) is Inangahua and a small museum tells of the earthquake that hit the region in 1968 leaving 70% of the buildings damaged or inhabitable. Further along the river one of the must stop places is Whites Creek and New Zealand's longest swing bridge. Crossing the river you get magnificent views of the gorge and once on the other side there are short bush walks, jet boat rides and some of the historic gold mining remnants.

The town of Murchison is a quiet place and a great lunch stop. Underneath its sleepy farming facade is an adventurers paradise with white water rafting, kayaking, 4WD trips and some great trout fishing.

Continuing to follow the river you then enter the Kahurangi National Park region and the Nelson Lakes. Trees, rivers and valleys accompany you now as you head into the suburb of Richmond and then Nelson City.

---

## SUGGESTED ACTIVITY - Underworld Rafting and Glowworm Experience with Underworld Adventures

A superb four hour Black Water Rafting adventure in the Paparoa National Park. You meander through a paradise of stalactites and stalagmites in the upper dry levels of the cave. You then enter a slow moving underground river on which you float in your tube using only the natural light of an awe inspiring display of glow worms for navigation. Emerge from the cave into a remote and untouched world before leaving its tranquility for the rushing bubbling waters of the low grade Nile River Rapids. It is important you understand the risks associated with this activity. For more information please see [here](#).

---

## SUGGESTED ACTIVITY - Glowworm Cave Tour with Underworld Adventures

Delve into an ancient wonderland of stalactites, stalagmites and glowworms in the enormous Nile River Caves. At the Charleston Base you'll be equipped with caving helmets, coats and boots and then taken to the Nile River Rainforest Train where you'll travel through the forest before exploring the dry upper levels of the Aranui Entrance series. Recently discovered, the Metro cave is one of only several caves in the world left in a natural unspoiled state. Exploring the lower level of the cave system, in the dark you will find galaxies of glow worms spanning over you. Your guides will enrich your journey with captivating illustrations, explanations and stories connecting you with this special place. After emerging back to the daylight a short stroll leads back to the train. It is important you understand the risks associated with this activity. For more information please see [here](#).

---

## Explore Nelson City

The vibrant Nelson city centre offers an abundance of cafes, restaurants, bars and shops and along the waterfront, you will find many fine restaurants specialising in seafood to enjoy. Founded in 1841 by the New Zealand Company the region today still boasts many remarkable buildings from these early days, however it is its close proximity to Abel Tasman National Park that is one of Nelson's greatest advantages to visitors with its pristine waters, beautiful native bush and golden beaches making this an adventure seeker's paradise. Nelson is also famous for its art and crafts and you will find many local offerings - including the world-famous Hoglund Glassworks.

---

## Your accommodation: The Hotel Nelson

The Hotel Nelson offers great facilities just 10 minutes walking distance from Nelson City Centre. Well equipped modern units with off street parking.



---

## Day 11



## Explore the Nelson and Abel Tasman region

Nelson is a great city to explore on foot. Visit the historic areas, and the famous Cathedral, or relax and enjoy the atmosphere at one of the many cafes on Trafalgar Street. Nelson is also noted for its many artists, and galleries displaying their work can be enjoyed by following one of the Art trails listed locally. Around 45 minutes drive away is Abel Tasman National Park. The region offers countless opportunities to explore for visitors of every age and capability, from enjoying the golden sand beaches and clear warm waters to guided kayaking trips viewing seals and dolphins, to exploring some of New Zealand's finest walking tracks.

---

## Abel Tasman National Park

Experience the golden beauty of Abel Tasman National Park, a coastal paradise renowned for its spectacular hiking track, pristine golden beaches, secluded inlets, and private lagoons. With its mild climate and stunning natural environment, it's a cherished destination for New Zealanders nationwide. Why not enjoy a scenic cruise through the Sounds or take a kayaking tour around its many sheltered bays? Relax to the melodious birdsong and get up close to some of the park's many animal residents, including native bats, geckos, birds, marine mammals, fur seals, and dolphins.

---

## SUGGESTED ACTIVITY - Seals, Beach Cruise and Walk

Experience the best of Abel Tasman on this combined beach cruise and walk tour. Cruise into the Tonga Island Marine Reserve and pause to watch the antics of the Resident Fur Seal Colony. After landing at the historic Tonga Quarry Beach, take a two hour, fifteen minute walk over forested land and around the spectacular Bark Bay Estuary, renowned for its cascading waterfalls. Rejoin the cruise at the sheltered golden cove on Medlands Beach.

---



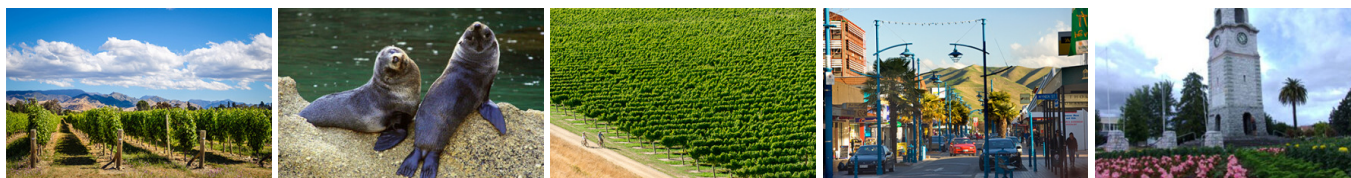
## Your accommodation: The Hotel Nelson

The Hotel Nelson offers great facilities just 10 minutes walking distance from Nelson City Centre. Well equipped modern units with off street parking.



---

## Day 12



### Nelson to Blenheim

The drive today takes you along the coast of Tasman Bay towards the Bryant Range. The highway between Nelson and Havelock also crosses the Pelorus River and just at this junction is the famous and historic Pelorus Bridge. From here there are a number of forest walks with the most popular the 30-minute loop through beech, rimu, and totara forest to the swing bridge. Continue on to Havelock - a small port town known as the Greenshell Mussel Capital and you can sample this delicacy at one of the local cafes or restaurants or take a cruise into the Marlborough Sounds to visit a Greenshell Mussel farm.

From Havelock you follow the valley south towards Blenheim and wine growing region of Marlborough. The town of Blenheim sits right at the heart of the New Zealand's largest wine producing region, Marlborough, and is ideally located to enjoy an afternoon sampling the local produce.

---

### SUGGESTED ACTIVITY - Sip Marlborough Half-Day Wine Tour with Marlborough Tour Company

Sip is perfect for those who want just a taste of Marlborough's expansive wine region over a short period of time.

The afternoon tour visits a select number of top iconic and boutique wineries for special tastings, chosen for their history, fabulous customer service, unique offering and stunning range of wines. Sip is ideal for gaining an introduction to Marlborough's incredible wine region in a fun and relaxed way. Enjoy tasting the delicious wine, wandering the beautiful wineries and meeting the people who know the wine and love sharing their passion for it.

---

### Blenheim

Surrounded by endless rows of vines, Blenheim lies at the heart of the Marlborough wine region. This charming, compact town is built around a traditional marketplace, offering a welcoming atmosphere and a taste of local life. With a fantastic selection of cafes, restaurants, and shops, it's the perfect place to unwind for an afternoon. The town is also home to the Omaka Aviation Heritage Centre, which houses Peter Jackson's Great War collection, complete with mannequins by Weta Workshop.

Of course, no visit to the region would be complete without sampling its world-class wines at the many renowned wineries.

---

### Your accommodation: Blenheim Palms Motel

Located 100 m from the central shops and eateries, the Blenheim Palms Motel offers tasteful individually designed apartment-styled rooms.



---

## Day 13



## Blenheim to Christchurch

Crossing the dry hills of the Marlborough ranges you head towards one of the most spectacular coastlines of the South Island, the Kaikoura Coast. The road hugs the shore for around 50 kilometres and offers many chances to view the native wildlife such as seabirds and New Zealand fur seals. To the east, you see the turquoise waters of the South Pacific Ocean and to the west the towering Kaikoura Ranges. Go through Kaikoura Township a bustling place with many cafes and shops but the main reason for visiting here is the wildlife. Depending on the season you may also see migrating Humpback Whales, Pilot Whales, Blue Whales and Southern Right Whales. Continue along the coast before heading inland through North Canterbury's major wine region, the Waipara Valley. You are also introduced to the South Island's most numerous inhabitants, the sheep. Choose to take a 40 minute detour to Hanmer Springs for a relaxing dip in the thermal pools before arriving in Christchurch, your destination for the night.

---

## Christchurch

Christchurch known in Māori as Ōtautahi, is the largest metro area in the South Island. Commonly referred to as New Zealand's "Garden City", Christchurch is home to one of the biggest public parks in the country, and beautiful botanic gardens. The city was hit with devastating earthquakes in 2010 and 2011, now the city crosses the line between its English heritage and a new modern architecture. To take in some arts and culture, pay a visit to the Canterbury Museum or the Christchurch Art Gallery. Take a step back in time with a tram around the city or punt along the Avon River. If tasting your way around the city is your means of travel, try out a cultural eating tour. A short drive from the CBD will lead you to the outskirts of the Banks Peninsula beachside suburb of Sumner or through the tunnel to Lyttelton Harbour which hosts fantastic markets on Saturday mornings.

---

## Your accommodation: Bella Vista Christchurch

Bella Vista Motel Christchurch offers a great range of comfortable modern units with excellent facilities. Enjoy the convenience of being located in close proximity to the Christchurch CBD, shops, entertainment and other activities.



## Day 14



## Return Your Vehicle to Christchurch Airport

It's time to return your rental car and let the South Island journey come to an end. If time allows spend the day exploring more of Christchurch, we'd suggest a leisurely drive up the Port Hills for some great sites and then over to the harbour of Lyttelton, before circling through the tunnel and back to the airport to continue your journey home.&nbsp;

---

## Farewell from Aotearoa / New Zealand

Bid farewell to Aotearoa / New Zealand, taking with you unforgettable memories of its breathtaking landscapes and incredible adventures. In Māori, it is said mā te wā, which is not goodbye, it is see you soon!

---

## Tour details

Departures:	Daily
Tour type:	South Island Self Drive
Starts:	Christchurch
Finishes:	Christchurch
Tour length:	14
Accommodation:	Motels
Car/transport type:	

---

## Accommodation summary

Day 1	Bella Vista Christchurch
Day 2	Motel on York
Day 3	Motel on York
Day 4	The Lodges At Transport World
Day 5	Lakefront Lodge
Day 6	Lakefront Lodge
Day 7	Scenic Suites Queenstown
Day 8	Bella Vista Franz Josef
Day 9	Punakaiki Treehouse
Day 10	The Hotel Nelson
Day 11	The Hotel Nelson
Day 12	Blenheim Palms Motel
Day 13	Bella Vista Christchurch