



Seas to Summits Tour

Begin your journey in Auckland, New Zealand's vibrant "City of Sails," where stunning harbour views set the tone for an unforgettable adventure. Travel south through the North Island's rich cultural heartlands, immersing yourself in Māori traditions and exploring the geothermal wonders of Rotorua. Cross the Cook Strait aboard the Interislander Ferry, arriving in the South Island to experience the dramatic landscapes that define this island nation. Wander through Marlborough's renowned wine region, encounter majestic whales off the Kaikōura coast, and soak in the alpine grandeur of Aoraki - Mount Cook. Discover the adventure hub of Queenstown with its stunning lakes and mountain vistas, then cruise the breathtaking fiords of Piopiotahi - Milford Sound. Conclude your journey aboard the legendary TranzAlpine Train, traversing lush rainforests and soaring alpine ranges back to Christchurch. This thoughtfully crafted itinerary offers a harmonious blend of cultural immersion, natural beauty, and luxurious comfort, making for an extraordinary New Zealand escape.

Starts in: Auckland
 Finishes in: Christchurch
 Length: 14days / 13nights
 Accommodation: Hotel 4 star
 Can be customised: Yes

This itinerary can be customised to suit you perfectly. We can add more days, remove days, change accommodations, mix it up, add activities to suit your interests or simply design and create something from scratch. Call us today to get your custom New Zealand itinerary underway.



Inclusions:

Includes: Late model rental cars

Includes: Unlimited kms

Included activity: Electronic Travel Guide and In-Country Support App

Included activity: Private Transfer Auckland Airport to your Auckland Accommodation with Tourcorp

Included activity: Wine Sampler Tour with Altitude Tours

Included activity: TranzAlpine Scenic Train: Greymouth to Christchurch Scenic Plus with Great Journeys NZ

Included activity: Private Transfer from Christchurch Accommodation to Christchurch Airport with Christchurch Touring Company

Included activity: Behind The Scenes Exclusive Tour with National Kiwi Hatchery

Included activity: Ocean Safari Whale Watching Flight with South Pacific Helicopters

plus much more...

Includes: Fully inclusive rental car insurance (excess may apply)

Includes: Afterhours emergency support while touring

Included activity: The Visitor Promise - Cultural Learning Course

Included activity: Milford Sound Flight and Cruise with Return Flight

Included activity: Flying Fox Glacier Helihike with Fox Glacier Guiding

Included activity: Private Transfer Christchurch Train Station to Accommodation

Included activity: Behind the Scenes Tour at Hobbiton

Included activity: Te Pā Tū Evening Māori Cultural Experience - Dinner Included

Included activity: Coastal Pacific Train: Kaikoura to Christchurch Scenic Plus

Day 1



Private Transfer Auckland Airport to your Auckland Accommodation with Tourcorp

You will be met at the Auckland airport by the driver and transferred to your Auckland accommodation.

Welcome to Auckland

Kia ora! Welcome to Auckland, known in Māori as Tāmaki Makaurau. Auckland is New Zealand's vibrant "City of Sails," and the country's largest metropolitan area. Nestled between the Pacific Ocean and the Tasman Sea, it offers something for everyone. Surrounded by native bush, lush rainforests, and pristine beaches, Auckland is a haven for both adventurers and urban explorers. Wander through world-class museums and galleries in the city centre or enjoy a peaceful retreat at the Auckland Gardens, where stunning landscapes showcase New Zealand's diverse flora. Stroll along the lively waterfront to savour fresh seafood and international cuisine at the Viaduct restaurants. For an unforgettable perspective, ascend the iconic SkyTower, New Zealand's tallest structure, and take in panoramic views of the city and its picturesque islands.

SUGGESTED ACTIVITY - When in Auckland with Aucky Walky Tour

Explore the City by foot with a 3-hour walking tour around Auckland also known as the 'City of Sails'. Your local guide will ensure that you get the history of Auckland along with discovering the hidden treasures that the City has to offer. Throughout your tour, you will be shown around the City hotspots, taken down hidden lanes, past street art, pointed out the best spots to eat, and learn firsthand the best parts of Auckland. During your walk you will stop by a local cafe for a refreshing bite to eat, and the chance to meet and mingle with the locals of the town.

Your accommodation: Sudima Auckland City

Conveniently located within easy walking distance of Auckland's bustling shopping, arts, dining and entertainment precincts and opposite the New Zealand International Convention Centre.



Day 2



Collect Rental Car

This tour's from price includes an intermediate-sized vehicle, setting you up for comfortable travels. Yet, we understand every adventure is unique! Feel free to select the perfect wheels from our incredible collection of rental cars, spanning from economy hatchbacks to premium SUVs.

Auckland to Hobbiton via Matamata

Head southbound on State Highway one through the lush farmland and dairy pastures of the Waikato region. The Bombay Hills mark the outer boundary of the greater Auckland area and its here you turn inland towards Matamata. This is the real Middle Earth, and you'll see many locations used in the filming of The Lord of The Rings and The Hobbit, as well as visiting the actual set of Hobbiton.

Behind the Scenes Tour at Hobbiton

Immerse yourself in the magic of Middle-earth on this exclusive walking tour of the Hobbiton Movie Set. In a small group of up to 30, explore the iconic 12-acre set, wander past famous Hobbit Holes and Bagshot Row, and step inside a Hobbit's home. Relax at The Green Dragon Inn with a drink from the Southfarthing range, then savour a hearty banquet lunch at The Millhouse, with second helpings encouraged. Go behind the scenes in the Art Department's workshop to uncover the craftsmanship behind Hobbiton's enchanting details. Conclude your adventure with a Hobbit-style platter of cheese, chutneys, and fruit at a hidden spot with stunning views.

Matamata to Rotorua

Just south of Matamata is the township of Tirau, home to the largest tin sheep and sheepdog, but it also offers a surprising number of bric a brac, art, craft and antique stores if you feel like browsing.

Arriving into the City of Rotorua the regions geothermal activity becomes evident as you see steam rising from the roadside and surrounding hills.

Considered the cultural centre for the Maori people, Rotorua is the ideal place to gain an insight into the history and culture. Dominating the display is the devastating volcanic eruption of Mt. Tarawera in 1886 but also of great interest is the Maori battalion display which portrays stories of this once feared military unit.

Nearby Ohinemutu Village is the original site of the first Maori settlers in the area and despite its now modern surroundings and buildings you can still gain a sense of what the original village was like. The magnificent meeting house and historic carvings along with the unique 'Tudor-style' St Faiths Church feature in many visitors photo albums.

One of the most popular introductions to the Maori Culture is through an evening at Mitai Maori Village where you can enjoy performances and demonstrations followed by a traditionally cooked hangi meal.

Of course Rotorua is also a great place to enjoy many other activities including, fishing, 4WD trips, relaxing spa treatments, mountain biking, walking and hiking plus helicopter and float plane trips.

Rotorua

Discover the geothermal, adventure, and cultural wonderland of Rotorua. As you explore, you may see steam rising from cracks in the road, bubbling and hissing water in pools along the lake's edge, and the unmistakable smell of Sulfur. Rotorua is rich in Māori culture and history, with many Māori inhabitants recognising the great potential of the volcanic land. For an outdoor adventure, head to The Redwoods and experience the rainforest treetops from high up. There are a few accessible trails for disabled hikers and great biking trails as well. If you're lucky, you might spot some of New Zealand's native birds, such as the Pīwakawaka (Fantail) and the Tūī. Alternatively, enjoy the Lake Tikitapu Blue Lake Walk or explore Kuirau Park, where you'll find bubbling mud pools and steaming lakes. Don't miss the private thermal reserves such as Te Puia and Wai-O-Tapu, where you can walk among bubbling mud pools, spouting geysers, and Sulfur ponds. Just a few minutes from the town centre, the Agrodome and National Kiwi Hatchery offer an insight into nature. Rotorua's rich Māori culture is a must-see. Spend an evening with Te Pā Tū, complete with a traditional-style dinner or stroll along the lake edge to reach one of the country's oldest Māori villages at Ohinemutu. When hunger strikes, visit Eat Street in Rotorua CBD, a vibrant street lined with delicious eateries and restaurants to satisfy any craving. No visit to Rotorua would be complete without experiencing Rotorua's original tourist attraction - a relaxing spa treatment. This town boasts an array of wellness experiences to unwind in. Whether you are seeking adventure, culture, or relaxation, Rotorua offers an unforgettable experience.

Your accommodation: Regent of Rotorua

Regent of Rotorua Boutique Hotel & Spa occupies a great location within walking distance of the lakefront, the government gardens and the city centres shops and restaurants. Luxury rooms are well equipped and on site facilities include a swimming pool, restaurant and bar and spa treatments.

Meals included: Breakfast, Lunch



Day 3



SUGGESTED ACTIVITY - Original Ziplining Experience with Rotorua Canopy Tours

Embark on a three-hour adventure through the native New Zealand forest. Journey through the beautiful forest canopy via an incredible network of trails, tree platforms, Ziplines and swing bridges. See breathtaking views of the woodland valleys and hills as you fly through tight openings in the trees. In between the thrill of the ziplines and suspended tree bridges, your guides will share their passion and knowledge for the forest and the conservation challenges to preserve it. It is important you read and understand the risks associated with this activity. For more information see [here](#).

Behind The Scenes Exclusive Tour with National Kiwi Hatchery

This exclusive guided experience is a truly unique opportunity to learn about the world-renowned kiwi hatchery conservation program. You are invited to step 'behind the glass' for an immersive experience to join the hatchery team in a staff-only area to learn about the incubation and chick rearing techniques from global experts. Learn all about New Zealand's intriguing national icon and the efforts of the kiwi husbandry team, see and discover what it takes to hatch and rear chicks, and if you're lucky, see baby chicks in person! Afterwards, take more time to learn in the interactive kiwi burrow and see adult kiwi roam and forage in our purpose-built Nocturnal house.

Te Pā Tū Evening Māori Cultural Experience - Dinner Included

New Zealand's Most Awarded Cultural Attraction, presenting Te Pā Tū. Feast on song, drama, tradition, and divine seasonal kai (cuisine) within the forest Pā (village) blanketed by towering Tawa trees, blazing bonfires, and a forest-formed amphitheatre. Te Pā Tū shares Māori history, traditions, and cultural aspirations across 4-hours of celebration and feasting. These events change with each season of the Maramataka, the Māori lunar calendar.

Your accommodation: Regent of Rotorua

Regent of Rotorua Boutique Hotel & Spa occupies a great location within walking distance of the lakefront, the government gardens and the city centres shops and restaurants. Luxury rooms are well equipped and on site facilities include a swimming pool, restaurant and bar and spa treatments.

Meals included: Breakfast, Speciality Dinner



Day 4



Rotorua to Wellington

The drive from Rotorua to Wellington takes you via the township of Taupō home to New Zealand's largest lake. Following the lakeshore South you'll pass Turangi and then ascend the central plateau onto the high country Rangipo Desert. Skirting the edge of Tongariro National Park, you'll reach the military town of Waiouru before descending through rich farmland and the rural towns of Taihape And Mangaweka. Follow the coast through Paraparaumu, Paekakariki and Plimmerton to arrive at your destination, Wellington.

Wellington

Wellington known in Māori as Te Upoko o Te Ika a Maui is home to New Zealand's centre of government. Often referred to as 'mini Melbourne', this windy city is a melting pot of art, culture, food, and fashion. Quirky laneway bars, underground art shows, and hipster eateries make up its inner-city vibe, while a host of sandy beaches outside the urban bustle bring a cheerful holiday feel. Head to Te Papa Museum for a history lesson and a ticket to one of its many international exhibitions or jump aboard the Wellington Cable Car - the only running funicular railway in the country. For those with an eye for boutique, fashion wander through Cuba St to sample some of the city's best vintage stores. Break for coffee at a hipster cafe and be sure to snap a pic outside the 'Beehive', New Zealand's parliamentary debate chamber. Go behind the scenes at Weta Workshop Experience, the Oscar Award Winning design studio behind Lord Of The Rings, The Hobbit, and Avatar. If you're a foodie at heart, a two-hour round trip to Martinborough is a must-do. Take your time as you wind through spectacular wine country. For an educational day out, learn about New Zealand's native species at Zealandia, the world's first fully-fenced eco-sanctuary and home to over 40 types of endangered and native birds.

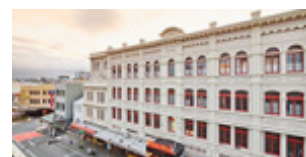
SUGGESTED ACTIVITY - Zealandia By Night Wildlife Sanctuary Tour

Taking a night tour of Zealandia wildlife eco-sanctuary is an unforgettable experience and one that comes highly recommended. A conservation success and safe haven for some of New Zealand's rarest native animals, Zealandia is home to many remarkable species of birds, reptiles and insects living wild within a beautiful 225 hectare (one square mile) valley, just 10 minutes from the central city.

Your accommodation: Naumi Hotel Wellington

Naumi Studio Wellington, an iconic heritage landmark in the heart of the Cuba Street precinct. After an extensive renovation, this 116-room property has transformed into visual feast for the senses, entralling guests with eclectic spaces inspired from seafaring, the library world and enduring love.

Meals included: Breakfast



Day 5



Return Rental Car to Wellington Ferry Terminal

Return your rental vehicle at the Wellington Ferry Terminal rental car depot and continue on the journey.

Interislander Ferry: Wellington to Picton with Premium Plus and Coastal Pacific Train with Scenic Plus: Picton to Kaikoura

Take the 92 km journey between Wellington and Picton that takes around 3 hours and has been described as 'one of the most beautiful ferry rides in the world'. Then take the Coastal Pacific train journey between the delightful port of Picton and stunning coastal town of Kaikoura.

Kaikōura

Kaikōura is a breathtaking seaside town teeming with marine life and natural beauty. As you wander through this coastal paradise, you'll be enveloped by the fresh sea breeze and the sounds of the ocean. Begin your adventure by observing the lively fur seal colony at the tip of the peninsula. For an unforgettable experience, board a boat to go whale watching and marvel at the majestic whales that call these waters home year-round. If you're feeling adventurous, take the plunge and swim with the playful dusky dolphins in their natural habitat. For bird enthusiasts, Kaikōura offers the chance to get up close with the native albatross, an awe-inspiring sight. The town is rich with attractions, walking tracks, and activities for every visitor. A walk around the Kaikōura Peninsula is a must, where you can explore tide pools teeming with marine life, observe sea creatures basking on the rocks, and watch seabirds soaring above. Be sure to keep a respectful distance from the sleeping sea lions you might encounter along the way. Ohau Point is another highlight, where you can watch fur seals frolic in their natural environment. To delve into Kaikōura's fascinating history, visit Fyffe House. This historic whaler's cottage offers a glimpse into the town's whaling past and its evolution over the years. No trip to Kaikōura is complete without sampling the local seafood. Renowned for having some of the best fish and chips in the country, Kaikōura's eateries serve fresh catches straight from the morning's haul, ensuring a delicious and authentic dining experience. If you need a break from the action, unwind at Lavendyl Lavender Farm. Stroll through the fragrant lavender fields, relax in the serene atmosphere, and browse the gift shop for a variety of lavender products. Kaikōura seamlessly blends adventure, history, and relaxation, making it a perfect destination for travellers seeking a unique and enriching experience.

Your accommodation: Sudima Hotel Kaikōura

This state-of-the-art waterfront hotel in Kaikōura has a 4.5 star rating with an outstanding in-house restaurant, a bar and conference facilities.

Meals included: Breakfast, Lunch



Day 6



Walking tracks in and around Kaikoura

Kaikōura offers scenic walking tracks for all levels, from coastal walks with stunning ocean views and wildlife to forested trails and the rewarding Mt Fyffe climb. These trails highlight Kaikōura's natural beauty and unique wildlife, perfect for nature enthusiasts.

Ocean Safari Whale Watching Flight with South Pacific Helicopters

Explore Kaikoura's wildlife colonies from the air in this incredible 45-minute helicopter Ocean Safari. Fly over the Seaward Mountain Ranges and Kaikoura Peninsula before reaching the vastness of the Pacific Ocean, home to nature's most amazing marine life. Kaikoura is located on the migratory routes for Humpback Whales, Southern right whales, Orca, and even Blue whales depending on the time of year. Other mammals that may be sighted include Dusky dolphins, fur seals, and albatross. Land at an exclusive location to experience the vistas of the mountains and sea before finishing with a flight back to Kaikoura Airport.

SUGGESTED ACTIVITY - Taste of the Farm with Hapuku Kitchen

Experience the magic of Kaikōura's wild landscape through a unique farm-to-table cooking class with Chef Fiona. Join her in her charming rural kitchen and learn to create uncomplicated yet delicious dishes inspired by the region's bounty. Harvest fresh ingredients from her extensive gardens and discover the secrets to transforming them into culinary masterpieces. Enjoy a welcome of locally roasted coffee, New Zealand tea, and fresh baking before venturing into the gardens. The day's menu is crafted based on the freshest harvest, ensuring peak flavour.

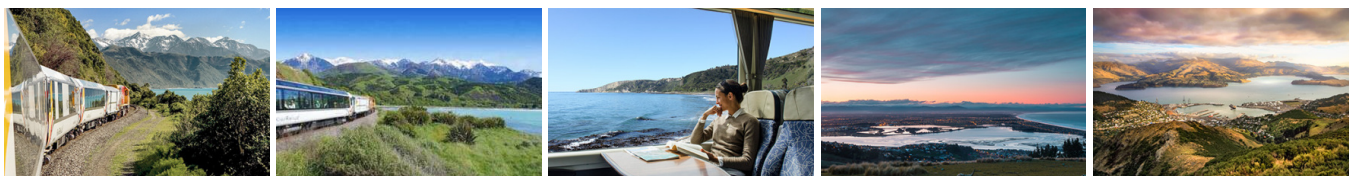
Your accommodation: Sudima Hotel Kaikōura

This state-of-the-art waterfront hotel in Kaikōura has a 4.5 star rating with an outstanding in-house restaurant, a bar and conference facilities.

Meals included: Breakfast



Day 7



Coastal Pacific Train: Kaikoura to Christchurch Scenic Plus

Great Journeys New Zealand's Scenic Plus carriage provides comfort and vast panoramic views as you journey between the delightful coastal town of Kaikoura and Christchurch, South Island's largest city. This journey is a scenic feast of New Zealand, with the Kaikoura mountain ranges on one side of your train and the rugged Pacific Ocean coastline on the other.

Scenic Plus offers an all-inclusive experience and the dedicated Scenic Plus carriage features large panoramic windows giving sweeping views as you travel through some of New Zealand's finest horticultural and farmland areas, and see amazing wildlife such as dolphins, seals and penguins from the comfort of your train carriage.

One of the world's most scenic train journeys, the Coastal Pacific travels through 22 tunnels and crosses 175 bridges, one of them being New Zealand's only road-rail bridge. As on The TranzAlpine, The Coastal Pacific includes an open air viewing carriage where all your senses are awakened with the clean, fresh, sea air.

Private Transfer Christchurch Train Station to Accommodation

On arrival at the Christchurch train station, you will be met by a private driver and transferred to your accommodation.

Your accommodation: Sudima Christchurch City

Sudima Christchurch City is a brand new 5-star boutique hotel, ideally located on Victoria Street. Amidst an array of cafes, restaurants and bars, stay only a martini olive pips' throw from beautiful Hagley Park and Christchurch's CBD. Experience the garden city in comfort and style.

Meals included: Breakfast, Lunch



Day 8



Collect Rental Car

This tour's from price includes an intermediate-sized vehicle, setting you up for comfortable travels. Yet, we understand every adventure is unique! Feel free to select the perfect wheels from our incredible collection of rental cars, spanning from economy hatchbacks to premium SUVs.

Christchurch to Aoraki-Mt Cook National Park

Drive through the heart of the South Island, crossing the vast Canterbury plains. Catch your breath in Geraldine before continuing through Fairlie. Ascending Burkes pass you'll come to the picturesque town of Lake Tekapo. Follow the road and take in the view of Aoraki-Mt Cook (New Zealand's tallest mountain) from the shores of Lake Pukaki, known for its glacier fed turquoise blue colour. Continue along the lake to your final destination Aoraki-Mt Cook Village.

Aoraki-Mt Cook National Park

At 3754m Aoraki-Mt Cook is Aotearoa-New Zealand's highest mountain, located deep in the heart of the Southern Alps. As well as its impressive beauty, Aoraki-Mt Cook National Park is also home to a huge range of awe-inspiring sights and activities. Take to the air with Mt Cook Ski Planes for a scenic flight that includes a glacier landing. At around 27 kilometres long the Tasman Glacier is New Zealand's longest and a Glacier Explorers tour allows you to see its unique features up close.

There are many short hikes in and around the park and these are well signposted around the village. Those with an interest in the night sky should take a Big Sky Stargazing tour with the Hermitage Hotel. The region is considered to have one of the clearest night skies in the world and is one of the few gold-rated dark sky reserves worldwide.

Visit the Sir Edmund Hillary Alpine Centre for insight into this region's mountain climbing history. You'll also learn of Sir Ed's incredible achievements and his dedication to helping others around the world.

SUGGESTED ACTIVITY - Glacier Explorers

Experience 500-year-old icebergs up close on the Aoraki-Mt Cook terminal lake. The Glacier Explorers tour is the only one of its kind in New Zealand and one of only three in the world! Very few glaciers terminate into lakes and even fewer of them are accessible. See towering ice cliffs and floating icebergs from the safety of a specially designed boat. These boats provide a safe way to view unseen and inaccessible areas of New Zealand's largest glacier The Tasman.

Big Sky Stargazing

Mt Cook is far from the city lights and therefore has some of the darkest skies in New Zealand, perfect for viewing the night sky! Their fully trained guides are delighted to show you the beautiful southern night sky using the naked eye, state-of-the-art astronomy telescopes, and binoculars at the outdoor viewing platform. If the weather is not favourable, then there will be an indoor alternative featuring New Zealand's first full-dome digital Planetarium, high-definition video images on a suspended 9m wide x 4.5m high full dome. Unleash your imagination as you discover the night sky, including the Southern Cross, seasonal ecliptic objects, planets, star clusters, moons, distant galaxies, and even our very own galaxy, the spectacular Milky Way!

Your accommodation: Hermitage Hotel Room Mount Cook View

The Hermitage Hotel ringed by magnificent snow-capped peaks of the Southern Alps, is a world-renowned tourist destination and has been an icon of superior accommodation and dining since 1884.

Meals included: Breakfast



Day 9



Aoraki Mt Cook National Park to Queenstown

Leaving the alpine region of Aoraki Mt Cook, you'll travel through the lakeside town of Twizel, then a little further to Omarama the gliding capital of New Zealand. Continue on over the Lindis Pass, one of New Zealand's highest roads with a summit of 971 metres. Arrive in the quaint village of Tarras, then continue on a short way to the historic Bendigo Reserve, one of Otago's original gold mining settlements. Follow the road to Cromwell, and keep going through the sheer cliffs of the Kawarau Gorge towards Gibbston, one of New Zealand's premier wine growing regions. See the historic Kawarau Bridge where you can bungy jump or relax and watch others take the plunge. Approaching Queenstown, the Remarkables mountain range comes into view as you arrive into the adventure capital of New Zealand.

Queenstown

Queenstown known in Māori as Tāhuna, is home to many adrenaline-inducing activities. Nestled on the shores of Lake Wakatipu, this alpine town has very distinct seasons, and most adrenaline-filled activities can be accessed year-round. Queenstown is home to jet boating, bungy jumping, rafting, skydiving, paragliding, and even indoor thrills. If you want that rush - head out on the Shotover Jet, dive off the Nevis Bungy, freefall on the Canyon Swing, or Zip line the Gondola. While arguably the brightest gem in New Zealand's crown, Queenstown offers far more than an action-packed getaway. If you're looking for a slightly slower pace, there are plenty of recreational activities, including hiking and biking trails to explore, guided tours, boat cruises, scenic flights, or spa and wellness options to help you get away. Head to the lakefront, eat at one of the al fresco eateries, and soak up the local vibes; catch a ride on the iconic 100-year-old steamship the TSS Earnslaw; or take the Skyline Gondola and enjoy bird's-eye views of the Remarkables mountain ranges and Lake Wakatipu. Pack a picnic and go for a hike, only 20 minutes from Central Queenstown, Coronet Peak opens for summer sightseeing. You can ride the Peak Gondola to the top for panoramic views and hike the trails, or go for a bike ride on many excellent biking trails. In winter, Queenstown becomes a world-class winter resort, with four ski areas and a range of activities, bars, restaurants, and ways to relax and unwind.

TSS Earnslaw Cruise and Walter Peak Gourmet BBQ Dinner

Enjoy a quintessential Kiwi experience, a delicious gourmet BBQ buffet meal, and a farm demonstration in a stunning lakeside setting. Take in the stunning views of Lake Wakatipu and its surroundings as you cruise across the lake to the historic Walter Peak high country farm aboard the TSS Earnslaw Steamship. Enjoy the ambiance of the heart of the stately homestead while your Colonel's Homestead Restaurant chef prepares a gourmet BBQ dinner. Your seasonal menu includes an extensive selection of local New Zealand produce, including succulent meats and a selection of delicious vegetables and salads. Complete your meal with your choice of delicious desserts, or New Zealand cheeses. After dinner, watch the farm dogs in action with a sheep-herding demonstration and say hello to the other farm animals. Finally, cruise home under the southern stars and enjoy the fresh night air as the lights of Queenstown draw ever closer.

Your accommodation: Rendezvous Heritage Queenstown

At the Rendezvous Heritage Queenstown, you could be forgiven for thinking you were in a postcard. Soak in the amazing view of the towering Remarkables mountain range rising from Lake Wakatipu from the comfort of the hotel. Crafted from centuries-old schist stone and cedar, this sophisticated Queenstown hotel is the perfect base to explore the adventure capital.

Meals included: Breakfast, Speciality Dinner



Day 10



Milford Sound Flight and Cruise with Return Flight

Departing Queenstown Airport, you enjoy a scenic flight to Milford Sound. During the flight you will experience panoramic views of spectacular alpine scenery, lush rainforest, and finally Milford Sound. Once on the ground at Milford Airport you are transferred by coach to the RealNZ Visitor Centre to board a luxury vessel for a cruise the full-length of Milford Sound. The vessel provides excellent viewing and there is plenty of time available to enjoy the waterfalls, rainforest, mountains and wildlife. Sheer cliffs starting hundreds of metres below the waters surface rise spectacularly to the sky. It is 16 kilometres from the head of the fiord to the open sea and RealNZ cruise ships will take you there and back comfortably. Dolphins and seals can often be seen, and following a large downpour the waterfalls that line the fiords are magnificent, particularly the 146 metre high Stirling Falls. The luxury vessels stop at various points and offer excellent viewing of waterfalls, rainforest, mountains and wildlife. The cruise is accompanied by comprehensive commentaries. Following the cruise, you are transferred the short distance to Milford Airport by coach for your return flight.

Your accommodation: Rendezvous Heritage Queenstown

At the Rendezvous Heritage Queenstown, you could be forgiven for thinking you were in a postcard. Soak in the amazing view of the towering Remarkables mountain range rising from Lake Wakatipu from the comfort of the hotel. Crafted from centuries-old schist stone and cedar, this sophisticated Queenstown hotel is the perfect base to explore the adventure capital.

Meals included: Breakfast



Day 11



Wine Sampler Tour with Altitude Tours

An immersive, fun and educational wine tour visiting four of Central Otago's finest cellar doors in the Gibbston wine region. Throughout the day, enjoy tasting 18 spectacular cool-climate wines and the option to eat a scrumptious lunch at Kinross. Visit the iconic Gibbston Valley Winery for a guided tour through New Zealand's largest underground wine cave and enjoy a tasting of their world-famous wines. Kinross is the next stop on the tour. Discover a range of different wines from multiple winemakers and learn about their incredible stories. After your wine tasting, there will be extra time to enjoy a delicious lunch at Kinross restaurant (additional cost). Visit Mt Rosa Wines for a tasting through their different varieties of their single-label wines. The mulled wine at Mt Rosa Wines is a fan favourite. The final tasting for the day is at The Church Tasting Room. Located in a small refurbished church on large sweeping grounds, enjoy a wine tasting including Pinot Noir, Gamay, Chardonnay and Chenin. After an incredible day, enjoy the drive back into Queenstown with views of rolling vineyards. Travel in style with transfers in a luxury Mercedes van, and make use of our complimentary Wi-Fi, and Spotify.

Your accommodation: Rendezvous Heritage Queenstown

At the Rendezvous Heritage Queenstown, you could be forgiven for thinking you were in a postcard. Soak in the amazing view of the towering Remarkables mountain range rising from Lake Wakatipu from the comfort of the hotel. Crafted from centuries-old schist stone and cedar, this sophisticated Queenstown hotel is the perfect base to explore the adventure capital.

Meals included: Breakfast



Day 12



Queenstown to Fox Glacier

Crossing the Crown Range the highest sealed road in the country, you'll pass through the alpine town of Wanaka. Following the shores of both Lake Wanaka and Hawea, you'll enter the township of Makarora, the gateway to Mt. Aspiring National Park. Stretch your legs on a walk to Blue Pools, a ten-minute stroll through lush rainforest. Marvel at the native beech and countless waterfalls as you continue toward the West Coast.

Crossing the Haast River you are now truly in the Wild West, a 600-kilometre stretch of bush, rainforest and podocarp forest. Continue to arrive at Fox Glacier, your destination for the night. Home to the largest glacier on the west coast, Fox is 13 kilometres long and ends in rainforest only 250 metres above sea level.

Fox Glacier

The mighty Fox Glacier is the largest and longest of the stunning West Coast glaciers. Remarkably, it ends in a temperate rainforest just 250 metres above sea level, only twelve kilometres from the sea. The valley at the glacier's head boasts more peaks than any other in New Zealand. Like all glaciers, the Fox Glacier advances and retreats, with its latest surge evident in the bulging lower ice fall. Alpine Guides offers access to the lower part of the glacier via a hidden track that winds through regenerating native forest, providing stunning views of the glacier's upper reaches. Fox Glacier Township, often described as the more "laid-back" of the twin Glacier Country townships, is celebrated for its relaxed atmosphere, excellent cafés, and a variety of accommodation options. The township also enjoys breathtaking views of New Zealand's tallest peaks, Mount Cook and Mount Tasman. For an unforgettable experience, take a helicopter ride to admire the glacier from above or opt for a heli hike to get up close to its icy formations. Nearby, Lake Matheson, renowned for its mirror-like reflections, is just a five-minute drive west of Fox Township. A short 25-minute drive further west takes you to historic Gillespie's Beach, famous for its crashing surf and views of distant snow-capped mountains.

Flying Fox Glacier Helihiike with Fox Glacier Guiding

The Fly-In, Fly-Out Helihiike offers an unforgettable blend of adventure and breathtaking scenery, combining thrilling helicopter flights with a guided walk on the Fox Glacier. Flying in grants access to a remote part of the glacier, where powerful ice forces create stunning caves and arches. After an exhilarating flight over the lower and upper icefalls and Victoria Falls, you'll land in a pristine area of the glacier. Equipped with crampons, follow your guide to explore ever-changing ice formations and caves, capturing incredible photos along the way. It is important you read and understand the risks associated with this activity. For more information please see [here](#).

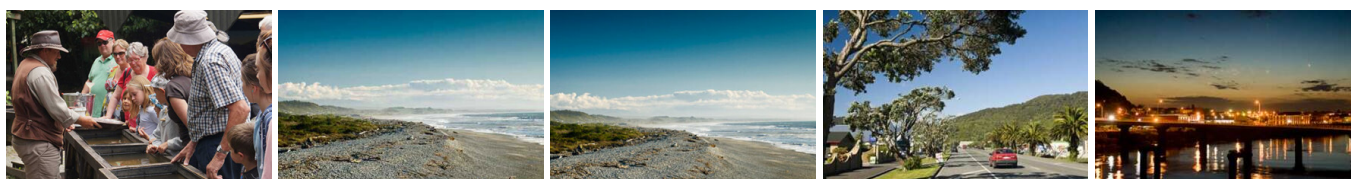
Your accommodation: Te Weheka Resort

A modern, purpose built boutique Fox Glacier hotel. Te Weheka Resort provides a balance of luxury, privacy and location, while being only a short stroll to Fox Glacier village.

Meals included: Breakfast



Day 13



Fox Glacier to Greymouth Train Station (Return Rental Car)

The drive north from Fox and Franz Josef takes you through the historic gold mining region of Ross and the town of Hokitika, a great place to explore the craft stores, in particular the jade or greenstone. The largest town on the West Coast, Greymouth is also the starting point for the TranzAlpine Scenic Train. Drop your rental car at the Greymouth Train Station depot located inside the train station building and board the TranzAlpine train.

TranzAlpine Scenic Train: Greymouth to Christchurch Scenic Plus with Great Journeys NZ

Great Journeys New Zealand's Scenic Plus carriage provides comfort and vast panoramic views, making our TranzAlpine scenic train journey the perfect way to explore coast-to-coast through the 'Great Divide' and the indomitable spine of mountains that partitions New Zealand's South Island. Scenic Plus offers an all-inclusive experience on the unique TranzAlpine scenic rail journey to invigorate all the senses! Feast your eyes on epic scenery while you savour regionally inspired cuisine paired with sumptuous wine and beer all from the comfort of your luxurious seat – a hosted dining experience like no other. Quite simply, we have done everything we can to ensure you feel at peace as you sink back in your seat and soak up the scenery.

Private Transfer Christchurch Train Station to Accommodation

On arrival at the Christchurch train station, you will be met by a private driver and transferred to your accommodation.

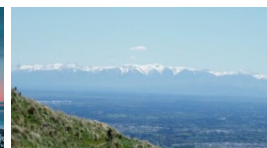
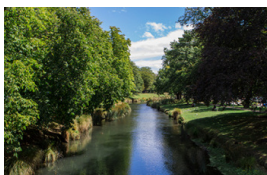
Your accommodation: Sudima Christchurch City

Sudima Christchurch City is a brand new 5-star boutique hotel, ideally located on Victoria Street. Amidst an array of cafes, restaurants and bars, stay only a martini olive pips' throw from beautiful Hagley Park and Christchurch's CBD. Experience the garden city in comfort and style.

Meals included: Breakfast, Lunch



Day 14



Private Transfer from Christchurch Accommodation to Christchurch Airport with Christchurch Touring Company

A private transfer will collect you from your accommodation and transfer you to Christchurch Airport in time for your departing flight.

Farewell from Aotearoa-New Zealand

Bid farewell to Aotearoa-New Zealand, taking with you unforgettable memories of its breathtaking landscapes and incredible adventures. In Maori, it is said mā te wā, which is not goodbye, it is see you soon!

Tour details

Departures:	Daily
Tour type:	Self Drive Tour (FTNZ ONLY)
Starts:	Auckland
Finishes:	Christchurch
Tour length:	14
Accommodation:	Hotel 4 star
Car/transport type:	

Included activities

Includes	11 breakfasts
Includes	Private train station transfers
Includes	Private airport transfers
Includes	TranzAlpine Train from Greymouth to Christchurch
Includes	Interislander ferry crossing

Accommodation summary

Day 1	Sudima Auckland City
Day 2	Regent of Rotorua
Day 3	Regent of Rotorua
Day 4	Naumi Hotel Wellington
Day 5	Sudima Hotel Kaikōura
Day 6	Sudima Hotel Kaikōura
Day 7	Sudima Christchurch City
Day 8	Hermitage Hotel Room Mount Cook View
Day 9	Rendezvous Heritage Queenstown
Day 10	Rendezvous Heritage Queenstown
Day 11	Rendezvous Heritage Queenstown
Day 12	Te Weheka Resort
Day 13	Sudima Christchurch City