



Northern Circuit Tour

Discover Auckland and the beauty of Waiheke Island before heading south to the cultural hub of Rotorua, where you will attend a traditional Maori dining experience and even meet a real Kiwi. Following the road to the East Coast, you will arrive at your luxury accommodation to unwind and slow down before you arrive in the nation's Capital City, Wellington. Departing Wellington, you head north to the West Coast and New Plymouth, the hub of Mt Taranaki and Egmont National Park. Before the tour ends, you will have a spellbinding tour getting up close and personal with the Waitomo Glowworms. The tour finishes in the quaint town of Cambridge before returning to Auckland.

Starts in: Auckland
 Finishes in: Auckland
 Length: 10days / 9nights
 Accommodation: Hotel 4 star
 Can be customised: Yes

This itinerary can be customised to suit you perfectly. We can add more days, remove days, change accommodations, mix it up, add activities to suit your interests or simply design and create something from scratch. Call us today to get your custom New Zealand itinerary underway.



Inclusions:

Includes: Late model rental cars

Includes: Unlimited kms

Included activity: Private Transfer Auckland Airport to your Auckland Accommodation with Tourcorp

Included activity: The Visitor Promise - Cultural Learning Course

Included activity: Te Pā Tū Evening Māori Cultural Experience - Dinner Included

Included activity: Mountain Jade - Highlights Tour

Included activity: Mount Tarawera Helicopter Landing and Geothermal Parks with Volcanic Air

Included activity: Glowworm and Cave Tour with Spellbound

Includes: Fully inclusive rental car insurance (excess may apply)

Includes: Afterhours emergency support while touring

Included activity: Electronic Travel Guide and In-Country Support App

Included activity: Waiheke Island Luxury Private Tour with Auckland & Beyond Tours - Lunch Included

Included activity: Behind The Scenes Exclusive Tour with National Kiwi Hatchery

Included activity: Restorative Journey with Wai Ariki Hot Springs and Spa

Included activity: Electric Bays Guided Tour

: 9 breakfasts, 1 lunch, 1 special dinner

Day 1



Private Transfer Auckland Airport to your Auckland Accommodation with Tourcorp

You will be met at the Auckland airport by the driver and transferred to your Auckland accommodation.

Welcome to Auckland

Kia ora! Welcome to Auckland, known in Māori as Tāmaki Makaurau. Auckland is New Zealand's vibrant "City of Sails," and the country's largest metropolitan area. Nestled between the Pacific Ocean and the Tasman Sea, it offers something for everyone. Surrounded by native bush, lush rainforests, and pristine beaches, Auckland is a haven for both adventurers and urban explorers. Wander through world-class museums and galleries in the city centre or enjoy a peaceful retreat at the Auckland Gardens, where stunning landscapes showcase New Zealand's diverse flora. Stroll along the lively waterfront to savour fresh seafood and international cuisine at the Viaduct restaurants. For an unforgettable perspective, ascend the iconic SkyTower, New Zealand's tallest structure, and take in panoramic views of the city and its picturesque islands.

Your accommodation: The Hotel Britomart Auckland

Soulful, smart and contemporary, The Hotel Britomart welcomes guests to Britomart, the vibrant centre of downtown waterfront Auckland. Still and calm, the rooms and suites at The Hotel Britomart pair simple elegance with the luxury of tactile materials. The Hotel Britomart is at the centre of a dynamic nine-block precinct of plant-lined streets, historic warehouses and the city's best shopping and eating.



Day 2



Waiheke Island Luxury Private Tour with Auckland & Beyond Tours - Lunch Included

Explore the famous Waiheke Island, known for its rolling vineyards, sandy beaches, rocky bays, and glorious wineries. Meet your guide in Auckland as you board the ferry to head out to the island, cruising along the Hauraki Gulf to reach the Matakaitia Bay terminal. On the Island, your guide will tour you around in a luxury vehicle, as you indulge in wine tasting and a vineyard tour from three premium wineries, before enjoying a picnic lunch at one of the gorgeous white sandy beaches. After lunch you will get to explore an award-winning Olive Oil estate, here you will get the chance to view the trees and the process of how the Oil is harvested and made. After your tour, you will board the ferry and head back to Auckland.

Your accommodation: The Hotel Britomart Auckland

Soulful, smart and contemporary, The Hotel Britomart welcomes guests to Britomart, the vibrant centre of downtown waterfront Auckland. Still and calm, the rooms and suites at The Hotel Britomart pair simple elegance with the luxury of tactile materials. The Hotel Britomart is at the centre of a dynamic nine-block precinct of plant-lined streets, historic warehouses and the city's best shopping and eating.

Meals included: Breakfast, Lunch



Day 3



Collect Rental Car

This tour's from price includes an intermediate-sized vehicle, setting you up for comfortable travels. Yet, we understand every adventure is unique! Feel free to select the perfect wheels from our incredible collection of rental cars, spanning from economy hatchbacks to premium SUVs.

Auckland to Rotorua

The drive south from Auckland takes you past the the Bombay Hills which mark the outer boundary of greater Auckland area and it's here you turn inland to central Waikato. You'll soon go through the town of Matamata where you can visit the fully intact Hobbiton film set used in the shooting of the Lord of The Rings and Hobbit trilogies. Continuing on, you'll pass several small farming communities before telltale signs of steam and other geothermal activity signal your arrival into Rotorua.

Rotorua

Discover the geothermal, adventure, and cultural wonderland of Rotorua. As you explore, you may see steam rising from cracks in the road, bubbling and hissing water in pools along the lake's edge, and the unmistakable smell of Sulfur. Rotorua is rich in Māori culture and history, with many Māori inhabitants recognising the great potential of the volcanic land. For an outdoor adventure, head to The Redwoods and experience the rainforest treetops from high up. There are a few accessible trails for disabled hikers and great biking trails as well. If you're lucky, you might spot some of New Zealand's native birds, such as the Pīwakawaka (Fantail) and the Tūī. Alternatively, enjoy the Lake Tikitapu Blue Lake Walk or explore Kuirau Park, where you'll find bubbling mud pools and steaming lakes. Don't miss the private thermal reserves such as Te Puia and Wai-O-Tapu, where you can walk among bubbling mud pools, spouting geysers, and Sulfur ponds. Just a few minutes from the town centre, the Agrodome and National Kiwi Hatchery offer an insight into nature. Rotorua's rich Māori culture is a must-see. Spend an evening with Te Pā Tū, complete with a traditional-style dinner or stroll along the lake edge to reach one of the country's oldest Māori villages at Ohinemutu. When hunger strikes, visit Eat Street in Rotorua CBD, a vibrant street lined with delicious eateries and restaurants to satisfy any craving. No visit to Rotorua would be complete without experiencing Rotorua's original tourist attraction - a relaxing spa treatment. This town boasts an array of wellness experiences to unwind in. Whether you are seeking adventure, culture, or relaxation, Rotorua offers an unforgettable experience.

Te Pā Tū Evening Māori Cultural Experience - Dinner Included

New Zealand's Most Awarded Cultural Attraction, presenting Te Pā Tū. Feast on song, drama, tradition, and divine seasonal kai (cuisine) within the forest Pā (village) blanketed by towering Tawa trees, blazing bonfires, and a forest-formed amphitheatre. Te Pā Tū shares Māori history, traditions, and cultural aspirations across 4-hours of celebration and feasting. These events change with each season of the Maramataka, the Māori lunar calendar.

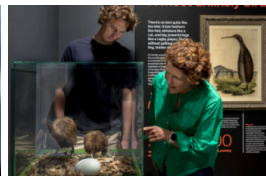
Your accommodation: On the Point

On the Point is a beautiful lodge accommodation in a stunning location and offering panoramic views. It also offers gourmet New Zealand food and wine, as well as a range of on site activities from pampering massage, fly fishing from the private beach, water sports, tennis, gym and boating and is only 10 minutes from the heart of Rotorua.

Meals included: Breakfast, Speciality Dinner



Day 4



Behind The Scenes Exclusive Tour with National Kiwi Hatchery

This exclusive guided experience is a truly unique opportunity to learn about the world-renowned kiwi hatchery conservation program. You are invited to step 'behind the glass' for an immersive experience to join the hatchery team in a staff-only area to learn about the incubation and chick rearing techniques from global experts. Learn all about New Zealand's intriguing national icon and the efforts of the kiwi husbandry team, see and discover what it takes to hatch and rare chicks, and if you're lucky, see baby chicks in person! Afterwards, take more time to learn in the interactive kiwi burrow and see adult kiwi roam and forage in our purpose-built Nocturnal house.

Mountain Jade - Highlights Tour

This 30-minute highlights tour is a rare opportunity to spend time with New Zealand Jade artists. New Zealand Jade known as Greenstone, but more commonly known in New Zealand as Pounamu has a rich history within Maori culture. The expert guide will show you the intricate process of Pounamu carving firsthand in the Mountain Jade studio. The local artist will be there to personally demonstrate the carving process and share their stories and knowledge with you. To top off the tour, you will get to select your very own piece of Pounamu and learn to string it yourself so you can take it home.

Restorative Journey Package with Wai Ariki Hot Springs and Spa

Indulge your senses in a Restorative Journey (Wai Whakaora), a thoughtfully designed therapeutic experience inspired by the practices and culture of Ngāti Whakaue. Embrace the healing power of the natural environment as your senses awaken through a series of hot and cold therapies. Your journey begins beneath a cascading waterfall, cleansing your body and mind. Transition to Te Ahi Tupua, where a sequence of hot and cold immersions invigorates and rejuvenates. Relax in the soothing waters of the Geothermal Pool, sourced from the renowned Rachel Spring. Follow this with a refreshing cold plunge, easing muscle tension and reducing inflammation. Conclude your experience in the Kohu Wai Arik steam room, where heated stones create a serene space for reflection and relaxation, leaving you revitalized and restored.

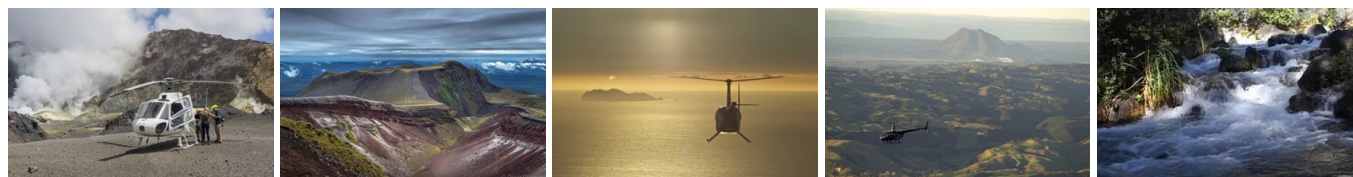
Your accommodation: On the Point

On the Point is a beautiful lodge accommodation in a stunning location and offering panoramic views. It also offers gourmet New Zealand food and wine, as well as a range of on site activities from pampering massage, fly fishing from the private beach, water sports, tennis, gym and boating and is only 10 minutes from the heart of Rotorua.

Meals included: Breakfast



Day 5



Mount Tarawera Helicopter Landing and Geothermal Parks with Volcanic Air

Combine the thrill of landing on Mount Tarawera with a flight that includes spectacular views on the stunning crater lakes, the renowned Tarawera Falls and the vibrant Waimangu and Wai-O-Tapu geothermal reserves. This Tour highlights these amazing features unique to this region because of their location on the faultline relative to the Pacific Rim of Fire.

Rotorua to Havelock North

This drive will take you south through the thermal region of Rotorua. Home to a plethora of unique geothermal attractions including boiling mud pits, natural hot springs and steaming geysers, this area is a must do before you move on to Havelock North. Notable attractions are Wai-O-Tapu, Waimangu and Craters of the Moon. Continue on to Taupo and marvel at the lake - A giant crater formed following a volcanic eruption in the year 180 CE. As you approach the city, be sure to stop at Huka Falls to view the spectacular sight of hundreds of cubic metres of water spilling every second down the narrow 11 metre drop. Leaving Taupo, follow the road as it climbs the rugged Ahimanawa Range before descending back down the Pacific Coast through the art deco town of Napier and finally onto Havelock North. The perfect base from which to explore the Tukituki River Valley and beyond to the coastal settlements of Ocean Beach and Waimarama.

Your accommodation: Rosewood Cape Kidnappers

Located in Hawke's Bay, one of New Zealand's most important wine districts, Cape Kidnappers has a rich history. The Farm is a five-star experience set on a 6,000-acre sheep and cattle farm which encompasses land reminiscent of Montana but plunges 800 feet straight into the sea. A championship golf course designed by Tom Doak is just one reason to experience The Farm.

Meals included: Breakfast



Day 6



Explore Hawkes Bay

Discover Hawke's Bay, known in Māori as Te Matau-a-Māui or the fish hook of Māui. This is a region renowned for its Mediterranean charm, iconic Art Deco architecture, and award-winning wineries. Explore Mission Estate, the birthplace of New Zealand wine, or tour vineyards for a deeper dive into its winemaking legacy. Fans of the 1930s can enjoy a Vintage Car Tour, showcasing Napier's architectural gems. Outdoor enthusiasts can cycle over 200km of scenic trails or unwind at pristine beaches like Ocean and Waimarama. Indulge your taste buds with local delights, from honey and chocolate to fresh orchard produce. The Hawkes Bay is also home to an abundance of wildlife, head out on a Gannet Safari or educate yourself at the National Aquarium of New Zealand.

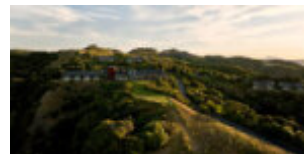
Walking tracks in and around Hawkes Bay

Hawke's Bay offers a variety of scenic walks, from coastal paths to forest trails, perfect for exploring the region's natural beauty. Whether you're looking for a short stroll or a more challenging hike, there's something for everyone. Be sure to check with the Department of Conservation for current conditions before heading out.

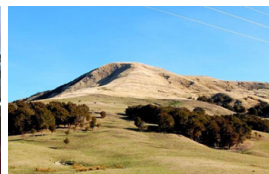
Your accommodation: Rosewood Cape Kidnappers

Located in Hawke's Bay, one of New Zealand's most important wine districts, Cape Kidnappers has a rich history. The Farm is a five-star experience set on a 6,000-acre sheep and cattle farm which encompasses land reminiscent of Montana but plunges 800 feet straight into the sea. A championship golf course designed by Tom Doak is just one reason to experience The Farm.

Meals included: Breakfast



Day 7



Havelock North to Wellington

Leave the rolling countryside of Hawke's Bay to traverse some of the country's richest dairy farmland in the Manawatu Gorge. Continue on through the Wairarapa Region and take a break in Masterton - home to the 'Golden Shears' sheep shearing competition. As you drive south, a visit to historic Greytown is a must do. Take in the restored Victorian buildings and make time for a cup of tea at one of its quaint cafes. Leaving state highway 2 you will cross over the Ruamahanga River into Martinborough wine country - then over the Remutaka Ranges to arrive in New Zealand's capital city, Wellington.

Wellington

Wellington known in Māori as Te Upoko o Te Ika a Maui is home to New Zealand's centre of government. Often referred to as 'mini Melbourne', this windy city is a melting pot of art, culture, food, and fashion. Quirky laneway bars, underground art shows, and hipster eateries make up its inner-city vibe, while a host of sandy beaches outside the urban bustle bring a cheerful holiday feel. Head to Te Papa Museum for a history lesson and a ticket to one of its many international exhibitions or jump aboard the Wellington Cable Car - the only running funicular railway in the country. For those with an eye for boutique, fashion wander through Cuba St to sample some of the city's best vintage stores. Break for coffee at a hipster cafe and be sure to snap a pic outside the 'Beehive', New Zealand's parliamentary debate chamber. Go behind the scenes at Weta Workshop Experience, the Oscar Award Winning design studio behind Lord Of The Rings, The Hobbit, and Avatar. If you're a foodie at heart, a two-hour round trip to Martinborough is a must-do. Take your time as you wind through spectacular wine country. For an educational day out, learn about New Zealand's native species at Zealandia, the world's first fully-fenced eco-sanctuary and home to over 40 types of endangered and native birds.

Electric Bays Guided Tour

Meet your guide at the Switched on Bikes store (15/22 Herd Street, Te Aro - entrance from the Water's Edge) at Wellington Waterfront for a 10 am departure. After listening to the safety briefing, learn how to operate your electric bike and enjoy time to practice in a car-free space before heading out. Once you are comfortable, saddle up for a fun bike tour of Wellington's bays and follow your guide along the Wellington Waterfront. Glide along the seafront, passing the lively harbor and the beaches of Oriental Bay - filled with swimmers and sun-bathers in the summer. Continue along the Miramar Peninsula and leave the bustle of the city behind as you cycle along the scenic coast. Pause along the way at a local cafe before looping back towards the city. Finally, set the bikes to 'turbo' to climb up to the lookout point of Mt Victoria for an unforgettable view over Wellington, the Miramar Peninsula, and the ocean harbor entrance.

Your accommodation: QT Wellington

The QT Wellington is superbly situated opposite Te Papa, Museum of New Zealand and Wellington's waterfront. The luxury rooms are just a few minutes walk from the cafes restaurants, theatres, galleries and shopping of the vibrant Courtenay Quarter.

Meals included: Breakfast



Day 8



Wellington to New Plymouth

Follow the main highway north along the Kapiti Coast towards the rich farmland of the Manawatu and Taranaki. Continue north-west towards the city of Whanganui which rests on the banks of the spectacular Whanganui River. Follow the coast of the South Taranaki Bight towards the volcanically formed region of New Plymouth. The dominant and perfect volcanic cone of Mt Egmont/Taranaki is visible for many miles as you approach the region. New Plymouth is the largest town in Taranaki. Situated on the coast this busy centre has a great range of restaurants and accommodation. The coastal highway and the magnificent Mt. Taranaki are the main attractions. The Taranaki region is very popular for its gardens and hosts the Rhododendron festival each year. New Plymouth has over 70 000 people with a beautiful coastal walkway running from Port Taranaki to the Waiwhakaiho River mouth. Pukekura Park, just a 5 minute walk from the city centre, is a haven of over 25ha of native bush including a beautiful lake. The district boasts 16 parks and reserves, with 13 official beaches, 60km of walkways as well as many "tucked away" spots for a peaceful moment.

Explore New Plymouth

New Plymouth, the vibrant heart of the Taranaki region, is a bustling coastal city with a population of over 70,000 people. Its stunning natural setting is defined by two key landmarks: the picturesque coastline and the magnificent, snow-capped Mount Taranaki. It is an ideal base for exploring the region. A highlight of New Plymouth is the scenic Coastal Walkway, a 12.7 km path that stretches from Port Taranaki to the mouth of the Waiwhakaiho River. The city is also a haven for garden enthusiasts, with the Taranaki region celebrated for its numerous parks and the annual Rhododendron Festival. Within a short walk of the city center lies Pukekura Park. This 52-hectare botanical gem features native bush, a beautiful lake with rowboats for hire, and the renowned Bowl of Brooklands, a natural amphitheater and outdoor concert venue. Adjacent to this is Brooklands Zoo, a family-friendly attraction. The city's commitment to green spaces is evident in its 16 parks and reserves, 13 official beaches, and 60 km of walking tracks, providing endless opportunities to appreciate the natural beauty of the area.

Your accommodation: King & Queen Hotel Suites

King & Queen Hotel Suites is New Plymouth's luxury boutique accommodation conveniently located in the Arts and Cultural hub of New Plymouth. The hotel is within easy walking distance of New Plymouth's finest restaurants, hospitality facilities, retail precinct, coastal walkway and Puke Ariki.

Meals included: Breakfast



Day 9



New Plymouth to Waitomo

Follow the coastline of the North Taranaki right before turning inland through the beef and cattle farming regions on North Taranaki. The small townships en route provide an insight into the real rural New Zealand. The township of Te Kuiti sits within the King Country, named after the movement of the Maori warrior Chief King Tawhiao, who during the Maori Wars, led a resistance against the European's who coveted their land. The rich rolling countryside accompanies you to the limestone valleys and caves that have attracted visitors for the past century.

Glowworm and Cave Tour with Spellbound

Be absolutely Spellbound on this tour that allows you to take in the truly spectacular display of glowworms in their natural habitat - over 30,000 of them gently lighting the entire cave. This relaxed and gentle tour will also treat you to the beautiful Cave of the Spirit where you will walk through an incredible succession of chambers to find speleothems, fossil remains of extinct moa and cathedrals filled with natural light, softly falling to the floor.

Waitomo to Cambridge

Today cross the lush farmland of the Waikato as you make your way to Cambridge. Pass through several small farming towns such as Otorohanga and Kihikihi, before arriving to small township of Cambridge. Renowned for producing racing horses, the town is centred around a traditional village green, giving Cambridge the feel of an English country town and making it well worth a stop to explore the cafes and antique stores.

Cambridge

Cambridge has the charm of an English country town, centered around the picturesque Victoria Square village green. Spend an afternoon exploring its delightful cafes and antique stores, or admire notable heritage buildings like the 1881 St. Andrew's Church, the old water tower, and the historic courthouse and post office. As the heart of New Zealand's equine industry, Cambridge proudly celebrates its champions. Discover an equine walk of fame embedded in the town centre pavement, and don't miss the magnificent bronze horse sculpture gracing the grounds of the town hall, a testament to its strong equestrian heritage.

Your accommodation: Hidden Lake Hotel & Apartments

Hidden Lake is a luxury new Solar Hotel with a broad palette of natural, sustainable and design aesthetics. Comfort is defined in its leisurely manner. Rooms and apartments reflect the woodland setting with floor to ceiling windows and splashes of colour. Features and facilities show creative flair and a commitment to sustainability and organic produce.

Meals included: Breakfast



Day 10



Cambridge to Auckland Airport

Heading north from Cambridge the main highway follows the Waikato River. State Highway 1 runs from Cape Reinga at the top of the North Island to Bluff at the bottom of the South Island and this section follows what was the original main trunk line, the Waikato River. New Zealand's longest river was used by Maori as an important trading and transport route and it is still important today as a water and power supply. New Zealand's only major motorway will deliver you directly to the airport.

Depart Auckland today

Explore more of vibrant Auckland city before dropping your rental car at the airport depot and continuing your onward journey.

Farewell from Aotearoa-New Zealand

Bid farewell to Aotearoa-New Zealand, taking with you unforgettable memories of its breathtaking landscapes and incredible adventures. In Maori, it is said mā te wā, which is not goodbye, it is see you soon!

Tour details

Departures:	Daily
Tour type:	Self Drive Tour (FTNZ ONLY)
Starts:	Auckland
Finishes:	Auckland
Tour length:	10
Accommodation:	Hotel 4 star
Car/transport type:	

Included activities

Includes	All breakfasts
Includes	Private train station transfers
Includes	Private airport transfers
Includes	Northern Explorer Scenic Train from Wellington to Auckland
Includes	Mitai Maori Village Concert & Buffet Dinner, Rotorua

Accommodation summary

Day 1	The Hotel Britomart Auckland
Day 2	The Hotel Britomart Auckland
Day 3	On the Point
Day 4	On the Point
Day 5	Rosewood Cape Kidnappers
Day 6	Rosewood Cape Kidnappers
Day 7	QT Wellington
Day 8	King & Queen Hotel Suites
Day 9	Hidden Lake Hotel & Apartments