

## Southern Highlights and Milford Track Guided Walk

Starting and finishing in Christchurch this tour allows time to self explore the tracks and trails of Mt. Cook National Park before venturing south and embarking on the world famous Milford Track Guided Walk. This fully guided and supported 4 day hike is with Ultimate Hikes and you spend the evenings in the wonderfully equipped lodges. From Queenstown head north to the West Coast and the glacier region before returning to Christchurch on board the Tranz Alpine Scenic Train.



Starts in: Christchurch  
 Finishes in: Christchurch  
 Length: 14days / 13nights  
 Accommodation: Hotel 4 star  
 Can be customised: Yes

This itinerary can be customised to suit you perfectly. We can add more days, remove days, change accommodations, mix it up, add activities to suit your interests or simply design and create something from scratch. Call us today to get your custom New Zealand itinerary underway.



### Inclusions:

Includes: Late model rental cars

Includes: Unlimited kms

Includes: Airport & ferry terminal rental car fees

Includes: Comprehensive tour pack (detailed itinerary, driving instructions, map/guidebooks, brochures)

Included activity: Private Transfer Christchurch International Airport to Christchurch Accommodation

Included activity: Milford Track Guided Walk Day 5 - Milford Sound to Queenstown

Included activity: Private Transfer Christchurch Train Station to Accommodation

Included activity: Milford Track 5 Day/4 Night Guided Walk

: Meals included: 13 breakfasts, 5 lunches, 4 dinners

Includes: Fully inclusive rental car insurance (excess may apply)

Includes: GPS navigation

Includes: Additional drivers

Includes: 24/7 support while touring New Zealand

Included activity: Electronic Travel Guide and In-Country Support App

Included activity: TranzAlpine Scenic Train: Greymouth to Christchurch

Included activity: Private Transfer from Christchurch Accommodation to Christchurch Airport with Christchurch Touring Company

Included activity: Milford Track Guided Walk - Day 1 - Queenstown to Glade House

## Day 1



### Private Transfer Christchurch International Airport to Christchurch Accommodation

On arrival, you will be met by a private driver and transferred to your Christchurch accommodation.

---

### Welcome to Christchurch City

Christchurch New Zealand's garden city is steadily being transformed into a vibrant urban destination. Encompassing a large green belt, it is known for its wide tree lined avenues and lush gardens. A great way to explore the city or easy way to see the sights or ride the historic trams across town to the renowned botanic gardens and the unique cardboard Transitional Cathedral, that's right it is built of cardboard!

---

### Your accommodation: The George Hotel

The George is the essence of supreme comfort. The award-winning 5 star hotel is opposite Hagley Park and just a few minutes stroll from the Botanic Gardens. It also has an award-winning restaurant, 50 Bistro onsite.



## Day 2



### Collect Rental Car

Choose a car to best suit your needs from our fantastic rental car range. From compact economy, hatchbacks to prestige SUVs.

---

### Christchurch to Aoraki-Mt Cook National Park

Drive through the heart of the South Island, crossing the vast Canterbury plains. Catch your breath in Geraldine before continuing through Fairlie. Ascending Burkes pass you'll come to the picturesque town of Lake Tekapo. Follow the road and take in the view of Aoraki-Mt Cook (New Zealand's tallest mountain) from the shores of Lake Pukaki, known for its glacier fed turquoise blue colour. Continue along the lake to your final destination Aoraki-Mt Cook Village.

---

### Your accommodation: Hermitage Hotel, Aoraki Wing Premium

The Hermitage Hotel ringed by magnificent snow-capped peaks of the Southern Alps, is a world-renowned tourist destination and has been an icon of superior accommodation and dining since 1884.

Meals included: Breakfast



## Day 3



## Aoraki-Mt Cook National Park

At 3754m Aoraki-Mt Cook is Aotearoa-New Zealand's highest mountain, located deep in the heart of the Southern Alps. As well as its impressive beauty, Aoraki-Mt Cook National Park is also home to a huge range of awe-inspiring sights and activities. Take to the air with Mt Cook Ski Planes for a scenic flight that includes a glacier landing. At around 27 kilometres long the Tasman Glacier is New Zealand's longest and a Glacier Explorers tour allows you to see its unique features up close.

There are many short hikes in and around the park and these are well signposted around the village. Those with an interest in the night sky should take a Big Sky Stargazing tour with the Hermitage Hotel. The region is considered to have one of the clearest night skies in the world and is one of the few gold-rated dark sky reserves worldwide.

Visit the Sir Edmund Hillary Alpine Centre for insight into this region's mountain climbing history. You'll also learn of Sir Ed's incredible achievements and his dedication to helping others around the world.

---

## Walking Track in Aoraki-Mt Cook National Park

Aoraki-Mt Cook Village offers a variety of short scenic walks suitable for all ages and fitness levels. Start your adventure at the Department of Conservation Information Centre, where you can learn about track conditions, local history, and the area's wildlife. Here are a few popular walks to explore: Bowen Bush Walk: 10-minute return Glencoe Walk: 10-minute return Red Tarns Track: 2-hour return Kea Point Walk: 2-hour return Hooker Lake Walk: 4-hour return

---

## SUGGESTED ACTIVITY - Glacier Explorers

Experience 500-year-old icebergs up close on the Aoraki-Mt Cook terminal lake. The Glacier Explorers tour is the only one of its kind in New Zealand and one of only three in the world! Very few glaciers terminate into lakes and even fewer of them are accessible. See towering ice cliffs and floating icebergs from the safety of a specially designed boat. These boats provide a safe way to view unseen and inaccessible areas of New Zealand's largest glacier The Tasman.

---

## SUGGESTED ACTIVITY - Glacier Highlights - Scenic Flight with Glacier Landing

Take in the spectacular Southern Alps, including New Zealand's highest peak Aoraki Mt Cook and the constantly changing glacial landscape. See the Hochstetter Icefall as you fly beneath the face of Mount Cook then along the length of the Tasman Glacier before landing on the glacier itself. Experience the silence of the mountains, broken only by the rumbling of an avalanche and creaking of the snow and ice beneath your feet. You'll take off again for another incredible flight over peaks, ice falls, alpine lakes and climbing huts. This flight offers fantastic close-up views of Aoraki Mount Cook, Mt Tasman and the Southern Alps from Aoraki Mount Cook National Park.

---

## Your accommodation: Hermitage Hotel, Aoraki Wing Premium

The Hermitage Hotel ringed by magnificent snow-capped peaks of the Southern Alps, is a world-renowned tourist destination and has been an icon of superior accommodation and dining since 1884.

Meals included: Breakfast



---

## Day 4



## Aoraki Mt Cook National Park to Queenstown

Leaving the alpine region of Aoraki Mt Cook, you'll travel through the lakeside town of Twizel, then a little further to Omarama the gliding capital of New Zealand. Continue on over the Lindis Pass, one of New Zealand's highest roads with a summit of 971 metres. Arrive in the quaint village of Tarras, then continue on a short way to the historic Bendigo Reserve, one of Otago's original gold mining settlements. Follow the road to Cromwell, and keep going through the sheer cliffs of the Kawarau Gorge towards Gibbston, one of New Zealand's premier wine growing regions. See the historic Kawarau Bridge where you can bungy jump or relax and watch others take the plunge. Approaching Queenstown, the Remarkables mountain range comes into view as you arrive into the adventure capital of New Zealand.

---

## Return your vehicle to Queenstown depot

Explore more of Queenstown before dropping your rental car at the depot and attending your Milford Track briefing.

---

## Queenstown

Queenstown known in Māori as Tāhuna, is home to many adrenaline-inducing activities. Nestled on the shores of Lake Wakatipu, this alpine town has very distinct seasons, and most adrenaline-filled activities can be accessed year-round. Queenstown is home to jet boating, bungy jumping, rafting, skydiving, paragliding, and even indoor thrills. If you want that rush - head out on the Shotover Jet, dive off the Nevis Bungy, freefall on the Canyon Swing, or Zip line the Gondola. While arguably the brightest gem in New Zealand's crown, Queenstown offers far more than an action-packed getaway. If you're looking for a slightly slower pace, there are plenty of recreational activities, including hiking and biking trails to explore, guided tours, boat cruises, scenic flights, or spa and wellness options to help you get away. Head to the lakefront, eat at one of the al fresco eateries, and soak up the local vibes; catch a ride on the iconic 100-year-old steamship the TSS Earnslaw; or take the Skyline Gondola and enjoy bird's-eye views of the Remarkables mountain ranges and Lake Wakatipu. Pack a picnic and go for a hike, only 20 minutes from Central Queenstown, Coronet Peak opens for summer sightseeing. You can ride the Peak Gondola to the top for panoramic views and hike the trails, or go for a bike ride on many excellent biking trails. In winter, Queenstown becomes a world-class winter resort, with four ski areas and a range of activities, bars, restaurants, and ways to relax and unwind.&nbsp;

### Your accommodation: Millennium Hotel Queenstown

Right in the heart of the action, the Millennium Hotel is just minutes from Queenstown's central shopping and entertainment district. Outdoor activities such as bungy jumping, white water rafting and jet boating are just some of the easily accessible activities nearby in New Zealand's adventure capital.

Meals included:            Breakfast



## Day 5



### Explore Queenstown

Well-known as New Zealand's 'adventure capital', Queenstown is home to a range of adventures, from the world's first and most famous bungy jumps to jet boat thrills, white-water rafting, and skydiving. However, Queenstown offers far more than a fast-paced, action-packed holiday. Settled on the shores of beautiful Lake Wakatipu beneath a soaring panorama of the Remarkables Mountain Range, this alpine town is surrounded by many historic, gastronomic, and scenic wonders. Take a stroll through the beautiful lakefront parks and gardens, browse through market stalls on weekends, dine in wonderful al-fresco restaurants, or ride on the 100-year-old historic Steamship - TSS Earnslaw to Walter Peak Station. Take the Queenstown Gondola up to Bob's Peak and soak up the panoramic views of the magnificent lake and mountain ranges. Steamer Wharf is full of delicious eateries and the O'Connells Pavillion is great for a spot of shopping. And after all of that, if you do want the adrenaline rush, Queenstown is known for taking your pick from the Shotover Jet, Canyon Swing, Zipline, Luge, or Heli-hike.

### Milford Track Guided Walk Briefing

Please check in at 2:45pm on the day prior to your walk for a group pre-track briefing. The briefing is held at the Ultimate Hikes Centre, Ground Floor, The Station Building, Duke Street Entrance, Queenstown. At the briefing, you will have the opportunity to confirm your dietary, medical information, and emergency contact details. You will be able to pick up any gear you need or purchase any last-minute items. The customer service staff will also give you an overview of what to expect while you are on track. If you cannot make the pre-track briefing, please contact Reservations on +64 3 450 1940 or [info@ultimatehikes.co.nz](mailto:info@ultimatehikes.co.nz) as soon as possible.

### SUGGESTED ACTIVITY - Shotover Jet Canyon Jet Boat Ride

Shotover Jet is the only company permitted to operate in the Shotover River Canyons. It's a thrilling ride! Skim past rocky outcrops at close range in your Shotover Jet 'Big Red', as you twist and turn through the narrow canyons at breathtaking speeds. And a major highlight - hold tight for the world-famous Shotover Jet full 360-degree spins!

### Your accommodation: Millennium Hotel Queenstown

Right in the heart of the action, the Millennium Hotel is just minutes from Queenstown's central shopping and entertainment district. Outdoor activities such as bungy jumping, white water rafting and jet boating are just some of the easily accessible activities nearby in New Zealand's adventure capital.

Meals included:            Breakfast



## Day 6



### Milford Track 5 Day/4 Night Guided Walk

Traversing the heart of New Zealand's wild fjord country, the Milford Track has long been described as "the finest walk in the world". Since Quintin Mackinnon pioneered the route in 1888, everyone from hardened trekkers to novices sporting their first pair of boots has taken up the challenge of the Milford Track.

The Fiordland National Park is the cornerstone of the Te Wahipounamu Southwest New Zealand World Heritage Area. Enjoy close encounters with the native birdlife: the Robin; Kea; Weka; Fantail; Parakeet; Bellbird; even Kiwi have been spotted! Walkers on the track to Milford Sound encounter Fiordland at its most spectacular: deep lakes; silent fjords; luxuriant forest and sheer canyons carved out of imposing granite define this landscape. On fine days there is a postcard shot around every corner, but only when it rains and torrents of water cascade down the mountainsides have you truly experienced the magic of the Milford Track.

The Milford Track Guided Walk is a 5 day / 4 nights Queenstown to Queenstown all-inclusive guided walk through the heart of Fiordland National Park to Milford Sound. The package includes all transport, accommodation, meals, snacks, backpacks and rain jackets. Accommodation is in lodges and you will be led by expert Ultimate Hikes guides.

---

### Milford Track Guided Walk - Day 1 - Queenstown to Glade House

The coach departs from the Ultimate Hikes Centre in Queenstown. Please arrive by 9.15am to meet your guides and board the coach for the two hour drive to Te Anau. We will have lunch in Te Anau before travelling on to Te Anau Downs, where a boat will take you up to the start of the track at the northern end of Lake Te Anau. It's a short walk to the historic Glade House, where you will be greeted with afternoon tea and shown to your room. Your guides will take you on a nature walk in the afternoon to give you an idea of the terrain and the environment you will be walking. In the evening, you'll have time to get to know your group over dinner.

---

#### Your accommodation: Milford Track Lodges

Milford Track Lodges have been purpose designed and built, with everything right down to the last nail flown in by helicopter! The result is sheer indulgence in the last place you would expect it. All lodges have drying rooms, flush toilets and hot showers complete with soap, shampoo, conditioner and even hairdryers. A full kitchen treats you with a three course dinner and cooked breakfast or enjoy a drink from the bar before dinner

Meals included: Breakfast, Lunch, Dinner



---

## Day 7



### Day 2 - Glade House to Pompolona

Your first full day of walking begins by crossing the Clinton River bridge. The smooth track follows the river up the valley to the Hirere Falls lunch shelter. Take a side walk to the wetlands, a complex eco-system unique to this section of track. After lunch look out for your first glimpse of Omanui/McKinnon Pass in the distance. You'll stay in the beech forest, until you come out onto the Prairie & detour down to soak your feet in Prairie Lake. From this meadow you can capture the true nature of the ice-carved Clinton Canyon. From here, it's a short climb to Pompolona Lodge. Today's walk is 16 km (10 miles) and takes 5-7 hours.

---

#### Your accommodation: Milford Track Lodges

Milford Track Lodges have been purpose designed and built, with everything right down to the last nail flown in by helicopter! The result is sheer indulgence in the last place you would expect it. All lodges have drying rooms, flush toilets and hot showers complete with soap, shampoo, conditioner and even hairdryers. A full kitchen treats you with a three course dinner and cooked breakfast or enjoy a drink from the bar before dinner

Meals included: Breakfast, Lunch, Dinner



## Day 8



### Milford Track Guided Walk Day 3 - Pompolona Lodge to QuintinLodge

From Pompolona Lodge the track leads up to Lake Mintaro at the head of the Clinton Valley, before climbing the Omanui/McKinnon Pass in a series of zig-zags. Take your time and enjoy the views. At the top you can rest at McKinnon memorial before passing the highest point and stopping for lunch in Pass Hut overlooking the Clinton Valley. The descent into the Arthur Valley is steep and uneven so take care and use poles. Viewing platforms give you a great view of the Cascades waterfalls. Quintin Lodge is a welcome sight at the bottom of the Pass. Take a short break to revive with a drink and a snack then we highly recommend doing the optional 90-minute round trip to Sutherland Falls, at 580m/1904ft it is one of the highest in the world and well worth seeing. Today's hike is 15 km (9 miles) and takes 6-8 hours.

### Your accommodation: Milford Track Lodges

Milford Track Lodges have been purpose designed and built, with everything right down to the last nail flown in by helicopter! The result is sheer indulgence in the last place you would expect it. All lodges have drying rooms, flush toilets and hot showers complete with soap, shampoo, conditioner and even hairdryers. A full kitchen treats you with a three course dinner and cooked breakfast or enjoy a drink from the bar before dinner

Meals included: Breakfast, Lunch, Dinner



## Day 9



### Day 4 - Quintin to Mitre Peak Lodge via Sandfly Point

Your final day on the track is the longest section at 21km. You'll walk down the Arthur Valley to the historic Boatshed. After a short break and a hot drink, the track continues on past MacKay Falls through lush beech forest to the lunch spot at Giants Gate waterfall. The final stretch of the track follows tranquil Lake Ada to Sandfly Point. From Sandfly Point it is a short boat trip across the renowned Milford Sound; the fjord often referred to as the eighth wonder of the world. Mitre Peak, the famously photographed pinnacle rises almost sheer from the Sound to a height of 1692m (5551ft). At Mitre Peak Lodge, relax in the bar enjoying the view, before sitting down to a celebratory dinner. Today enjoy 21km (13 miles) 6-8 hours of walking.

### Your accommodation: Milford Track Lodges

Milford Track Lodges have been purpose designed and built, with everything right down to the last nail flown in by helicopter! The result is sheer indulgence in the last place you would expect it. All lodges have drying rooms, flush toilets and hot showers complete with soap, shampoo, conditioner and even hairdryers. A full kitchen treats you with a three course dinner and cooked breakfast or enjoy a drink from the bar before dinner

Meals included: Breakfast, Lunch, Dinner



## Day 10



## Day 5 - Mitre Peak Lodge to Te Anau and Queenstown

This morning after breakfast we'll take you on a cruise on Milford Sound. Watch for dolphins and fur seals and, if the waterfalls are in full flow, you'll have seen Fiordland at its very best! Following the cruise it's time to head back to Queenstown. The coach trip follows the scenic Milford Road through Homer Tunnel and on to Te Anau, where there will be a short break before the last leg of the journey to Queenstown. Lunch will be eaten along the way.

### Your accommodation: Millennium Hotel Queenstown

Right in the heart of the action, the Millennium Hotel is just minutes from Queenstown's central shopping and entertainment district. Outdoor activities such as bungy jumping, white water rafting and jet boating are just some of the easily accessible activities nearby in New Zealand's adventure capital.

Meals included: Breakfast, Lunch



## Day 11



### Collect Rental Car

Choose a car to best suit your needs from our fantastic rental car range. From compact economy, hatchbacks to prestige SUVs.

### Queenstown to Franz Josef Glacier via Wānaka

From Queenstown you'll cross the Crown Range, the highest sealed road in New Zealand to arrive in the Alpine town of Wānaka, gateway to Mt Aspiring National Park. Skirting the shores of both Lake Wanaka and Hawea, you will enter the small town of Makarora. Stop at Blue Pools for a 1-hour return walk through the native beech forest to a glacier-fed swimming hole. Continue on through the remote seaside settlement of Haast before heading up the wild West Coast highway you pass through ancient temperate rainforests while getting sneak peeks of the wild coast beaches occasionally. Paringa Salmon Farm is worth a stop to stretch your legs, feed the fish, and stop for lunch and refreshments. Keep heading North and be sure to enjoy the view of the ever-changing towering snowcapped Southern Alps Mountain Range. Fox Glacier welcomes you first, then comes your destination for the night Franz Josef township.

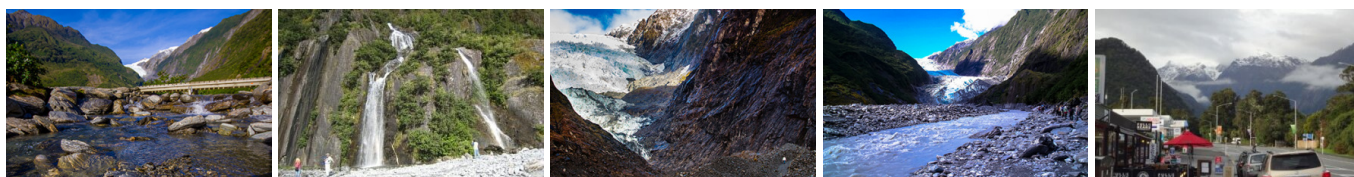
### Your accommodation: Scenic Hotel Franz Josef Glacier

Only a breath away from the Franz Josef Glacier, Scenic Hotel is located in the heart of Franz Josef Village. Here you will find all of the amenities you would expect, as well as being close to the shops, restaurants and activities on offer in the beautiful Westland region.

Meals included: Breakfast



## Day 12



### Explore Franz Josef

Franz Josef is a small but lively town in the heart of the West Coast, known for its 12km long glacier. Surrounded by lush rainforest-clad mountains the township has a vibrant and bustling atmosphere. To see the ice from a viewpoint you can walk along the valley floor to the viewpoint below the terminal face. However, to go on the glacier itself you must take a licensed helicopter tour. If walking is not your thing you can explore the township full of souvenir and gift shops, some great spots for a bite to eat are SnakeBite Brewery or King Tiger.

### SUGGESTED ACTIVITY - Twin Glacier Scenic Helicopter Flight with The Helicopter Line

A spectacular scenic flight soaring over two of New Zealand's most famous glaciers, Fox and Franz Josef. Landing at the head of one and view the incredible sight of this frozen river as it winds its way through ancient carved valleys.

### Your accommodation: Scenic Hotel Franz Josef Glacier

Only a breath away from the Franz Josef Glacier, Scenic Hotel is located in the heart of Franz Josef Village. Here you will find all of the amenities you would expect, as well as being close to the shops, restaurants and activities on offer in the beautiful Westland region.

Meals included: Breakfast



---

## Day 13



### Franz Josef to Greymouth Train Station

Head north along the mighty West Coast highway you pass through ancient temperate rainforests while getting sneak peeks of the wild coast beach occasionally. Whataroa is the next town where you can see one of the world's rarest birds, the Kōtuku - White Heron. The Kōtuku nest at the Waitangi Roto Nature Reserve, only accessible with a guided tour from October to March. The next town is Ross which is the site of an old gold mining settlement where the local information centre offers you the chance to pan for gold. Hokitika is a great place to explore craft and gift stores and head to the coast and take in the endless sea views. The Pounamu-Greenstone on offer in Hokitika is probably some of the best you will see in the country. Continue on to Greymouth, the largest town on the West Coast and the starting point for the next leg of your journey the TranzAlpine Scenic Train. Drop your rental car at the Greymouth Train Station depot located at the train station building before boarding your train to Christchurch.

---

### TranzAlpine Scenic Train: Greymouth to Christchurch

Considered one of the world's great train journeys, the TranzAlpine Scenic Train takes you from Greymouth to Christchurch. Travel across the South Island from the west to the east coast through Arthur's Pass National Park. From the comfort of your carriage see lush beech forest, deep river valleys and the spectacular peaks of the Southern Alps. Descend to the windswept Canterbury Plains before arriving in the city of Christchurch.

---

### Private Transfer Christchurch Train Station to Accommodation

On arrival at the Christchurch train station, you will be met by a private driver and transferred to your accommodation.

---

### Your accommodation: The George Hotel

The George is the essence of supreme comfort. The award-winning 5 star hotel is opposite Hagley Park and just a few minutes stroll from the Botanic Gardens. It also has an award-winning restaurant, 50 Bistro onsite.

Meals included: Breakfast



---

## Day 14



### Private Transfer from Christchurch Accommodation to Christchurch Airport with Christchurch Touring Company

A private transfer will collect you from your accommodation and transfer you to Christchurch Airport in time for your departing flight.

---

### Farewell from Aotearoa-New Zealand

Bid farewell to New Zealand, taking with you unforgettable memories of its breathtaking landscapes and incredible adventures. In Maori, it is said mā te wā, which is not goodbye, it is see you soon!

---



## Tour details

Departures:	Daily
Tour type:	South Island Self Drive
Starts:	Christchurch
Finishes:	Christchurch
Tour length:	14
Accommodation:	Hotel 4 star
Car/transport type:	

---

## Included activities

Includes	All breakfasts
Includes	Private airport transfers
Includes	Private train station transfers
Includes	TranzAlpine Train from Greymouth to Christchurch
Includes	Milford Track Guided Walk with Ultimate Hikes

---

## Accommodation summary

Day 1	The George Hotel
Day 2	Hermitage Hotel, Aoraki Wing Premium
Day 3	Hermitage Hotel, Aoraki Wing Premium
Day 4	Millennium Hotel Queenstown
Day 5	Millennium Hotel Queenstown
Day 6	Milford Track Lodges
Day 7	Milford Track Lodges
Day 8	Milford Track Lodges
Day 9	Milford Track Lodges
Day 10	Millennium Hotel Queenstown
Day 11	Scenic Hotel Franz Josef Glacier
Day 12	Scenic Hotel Franz Josef Glacier
Day 13	The George Hotel