

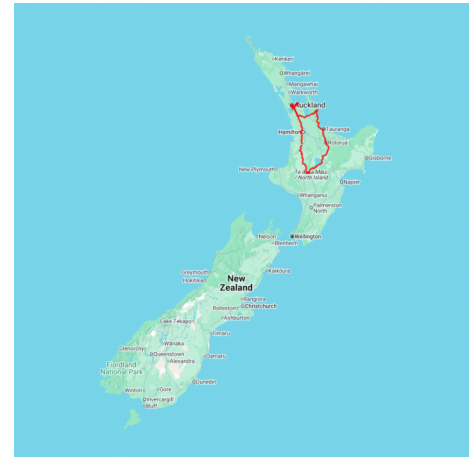


## Great Northern Land

Starting with a relaxing break on Waiheke Island, you'll explore the boutique wineries on this balmy haven. You'll then journey south for a Coromandel Wilderness Adventure, Maori culture in Rotorua and the majestic mountains of Tongariro National Park as you hike the renowned Tongariro Crossing.

Starts in: Auckland  
 Finishes in: Auckland  
 Length: 10days / 9nights  
 Accommodation: Boutique Lodges & Hotels  
 Can be customised: Yes

This itinerary can be customised to suit you perfectly. We can add more days, remove days, change accommodations, mix it up, add activities to suit your interests or simply design and create something from scratch. Call us today to get your custom New Zealand itinerary underway.



### Inclusions:

Includes: Late model rental cars

Includes: Unlimited kms

Included activity: Private Transfer Auckland Airport to your Auckland Accommodation with Tourcorp

Included activity: The Visitor Promise - Cultural Learning Course

Included activity: Essence of Waiheke Wine Tour with Ananda

Included activity: Wilderness Adventure Walk with Kiwi Dundee - Lunch Included

Included activity: Sky Waka Gondola Sightseeing Trip with Whakapapa

Included activity: Private Footwhistle Glowworm Cave Tour with CaveWorld

Includes: Fully inclusive rental car insurance (excess may apply)

Includes: Afterhours emergency support while touring

Included activity: Electronic Travel Guide and In-Country Support App

Included activity: Fullers Ferry Auckland to Waiheke Island (Return)

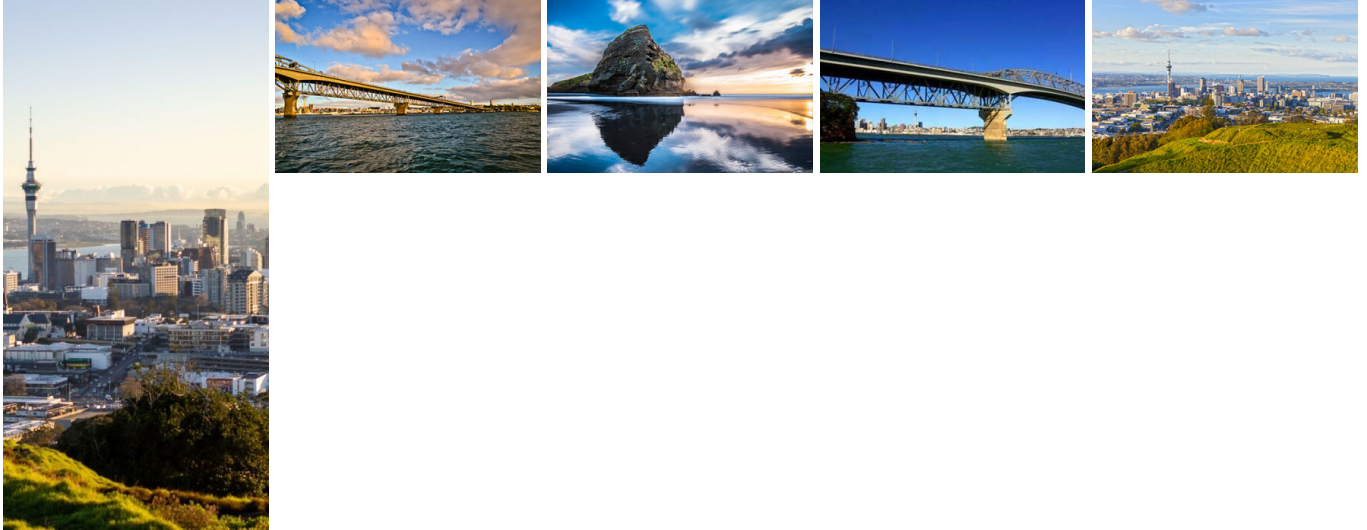
Included activity: Fullers Ferry Waiheke Island to Auckland

Included activity: Te Pā Tū Evening Māori Cultural Experience - Dinner Included

Included activity: Private Guided Tongariro Alpine Crossing with Adrift

: Meals included: 9 breakfasts, 1 lunch, 1 dinner

## Day 1



### Private Transfer Auckland Airport to your Auckland Accommodation with Tourcorp

You will be met at the Auckland airport by the driver and transferred to your Auckland accommodation.

---

### Welcome to Auckland

Welcome to Auckland, known in Māori as Tāmaki Makaurau. Auckland is New Zealand's vibrant "City of Sails," and the country's largest metropolitan area. Nestled between the Pacific Ocean and the Tasman Sea. Surrounded by native bush, lush rainforests, and pristine beaches, Auckland is a haven for both adventurers and urban explorers. Wander through world-class museums and galleries in the city centre or enjoy a peaceful retreat at the Auckland Gardens, where stunning landscapes showcase New Zealand's diverse flora. Stroll along the lively waterfront to savour fresh seafood and international cuisine at Viaduct restaurants. For an unforgettable perspective, ascend the iconic SkyTower, New Zealand's tallest structure, and take in panoramic views of the city and its picturesque islands.

---

### SUGGESTED ACTIVITY - Harbour Sailing Dinner Cruise with Explore

This unique on-water sailing and dining experience is not to be missed while you're in Auckland. Enjoy smooth sailing on the Waitemata Harbour - then watch this photogenic city come alive with twinkling lights. Enjoy your meal as you sail around the beautiful Auckland Harbour taking in the view as the sun slowly sets. You'll be treated to canapes and a drink as you set off towards Westhaven Marina. To finish the evening off, savour your dessert course as you leisurely sail back to Auckland's vibrant Viaduct Harbour.

---

### SUGGESTED ACTIVITY - All Blacks Experience

See what it takes to make, shape and be an All Black. Experience first-hand the excitement and emotion of game day. Discover the stories behind some of world rugby's most famous players, moments, and matches. This guided experience introduces you to the game of rugby including state-of-the-art displays combining sound, images, interactive technology, and hands-on activities. Discover New Zealand's deep passion for our national sport, experience the full force of the All Blacks haka, and tackle interactive zones where you can try out your kicking, catching, line-out, and accuracy skills against legendary All Blacks.

---

### SUGGESTED ACTIVITY - Wētā Workshop Unleashed

A jaw-dropping, senses-shattering, awe-inspiring adventure into the heart of movie magic! Get hands-on and immerse yourself in an extraordinary world of practical effects, props and larger-than-life sets. On this award-winning tour, you can explore three movie projects imagined by the Weta crew and uncover how they bring big screen concepts to life. Discover a mind-blowing world of robots, monsters, dinosaurs and more - step right into the action to see, play and experience movie-making up close.

---

### Your accommodation: Fable Auckland

Located right on Queen Street the Fable Auckland is boutique and stylish property with an ideal location to enjoy and explore the vibrant heart of the 'City of Sails'.



## Day 2



### Fullers Ferry Auckland to Waiheke Island

Take a scenic approximately 45-minute cruise through the Hauraki Gulf between the Auckland down town ferry terminal and Matiatia Wharf on Waiheke Island.

### Essence of Waiheke Wine Tour with Ananda

Known as 'New Zealand's Island of Wine', Waiheke has become home to a dedicated group of award-winning wine producers. With a unique micro-climate and the winemakers' philosophy of 'small is beautiful', Waiheke has produced some of New Zealand's most prestigious wines. Visit three of Waiheke's top vineyards and sample a range of their wines. Along the way enjoy a commented scenic drive, learning about the Island's history, geography, people, and culture from your knowledgeable local guide.

### Fullers Ferry Waiheke Island to Auckland

Take a scenic approximately 45-minute cruise through the Hauraki Gulf between Matiatia Wharf on Waiheke Island and the Auckland downtown ferry terminal.

### Your accommodation: Fable Auckland

Located right on Queen Street the Fable Auckland is boutique and stylish property with an ideal location to enjoy and explore the vibrant heart of the 'City of Sails'.

Meals included: Breakfast



## Day 3



### Collect Rental Car

This tour's from price includes an intermediate-sized vehicle, setting you up for comfortable travels. Yet, we understand every adventure is unique! Feel free to select the perfect wheels from our incredible collection of rental cars, spanning from economy hatchbacks to premium SUVs.

### Auckland to Pauanui

Leaving Auckland you will travel through rolling green Waikato countryside and across the Hauraki Plains. The drive will take you near the Firth of Thames, a haven for wildlife, in particular, the shorebirds at Miranda. Arriving in the historic gold town of Thames you then cross the Southern Coromandel Ranges and onto the scenic east coast of the peninsula, littered with white sandy beaches. The destination of Pauanui meaning "Big Paua" in Māori, lies at the mouth of the Tairua River on its south bank, directly opposite the larger town of Tairua.

### SUGGESTED ACTIVITY - Driving Creek Railway & Potteries - EyeFull Tower Tour

Driving Creek Railway and Potteries has become a Coromandel icon. The dream of Barry Brickell was to establish a pottery workshop on his land. Using a railway he would have access to the clay on the land and the pine kiln fuel. Over the next 15 years the railway developed until in 1990 it was finally licensed to carry fare paying passengers and ever since thousands of visitors have made the trip to Coromandel to experience this unique attraction. The 1 hour return train trip on the innovatively designed trains takes you through replanted native kauri forest and includes 2 spirals, 3 short tunnels, 5 reversing points and several large viaducts as it climbs up to the mountain-top terminus. The pottery is still producing and you can watch the artists at work as well as purchase items. It is important you read and understand the risks associated with this activity. For more information please see [here](#).

### Your accommodation: Grand Mercure Puka Park Resort

Puka Park Resort is situated on the eastern side of the Coromandel Peninsula. Nestled amongst 25 acres of New Zealand's most beautiful native bush this prestigious hideaway offers luxury and seclusion at its best.

Meals included: Breakfast



---

## Day 4



### Wilderness Adventure Walk with Kiwi Dundee - Lunch Included

This day is a challenging hiking journey into tranquil and remote pristine rainforest surrounded by giant rock faces, rugged volcanic peaks, and ancient Kauri, Rimu and Rata trees. Wonder at the world's largest tree ferns, crystal clear rivers and rock pools. Enjoy the fascinating history and learn about the flora and fauna within this magnificent forest.

Includes a picnic lunch to enjoy by the river or up in the mountains.

---

### Your accommodation: Grand Mercure Puka Park Resort

Puka Park Resort is situated on the eastern side of the Coromandel Peninsula. Nestled amongst 25 acres of New Zealand's most beautiful native bush this prestigious hideaway offers luxury and seclusion at its best.

Meals included: Breakfast



---

## Day 5



### Pauanui to Rotorua via Tauranga

Leaving Pauanui, head south to New Zealand's surfing mecca. In addition to lazing on the beach or surfing, Whangamata offers big game fishing, walking and mountain biking in native and exotic forests. Continuing on to Tauranga you will arrive into the harbourside city in the Bay of Plenty region. It hosts historic buildings like the Elms Mission Station, an 1847 Georgian-style home. A bridge over the harbour connects Tauranga to Mount Maunganui, a beach town with hot saltwater pools and an extinct namesake volcano with winding walking paths. Finally, you will arrive into the City of Rotorua. The regions geothermal activity becomes evident as you see steam rising from the roadside and surrounding hills. Considered the cultural centre for the Maori people, Rotorua is the ideal place to gain an insight into the history and culture. Visit the local museum located in the government gardens or the nearby Ohinemutu Village, the original site of the first Maori settlers in the area or enjoy a traditional Maori "Hangi" meal and a cultural performance. Of course, Rotorua is also a great place to enjoy many other activities including, fishing, 4WD trips, relaxing spa treatments, mountain biking, walking and hiking plus helicopter and float plane trips.

---

### Your accommodation: On the Point

On the Point is a beautiful lodge accommodation in a stunning location and offering panoramic views. It also offers gourmet New Zealand food and wine, as well as a range of on site activities from pampering massage, fly fishing from the private beach, water sports, tennis, gym and boating and is only 10 minutes from the heart of Rotorua.

Meals included: Breakfast



## Day 6



### Explore Rotorua

Peppered with natural hot springs, boiling mud pools and steaming geysers, Rotorua sits within one of the world's most active volcanic regions. Geothermal landmarks aside, this city of sulphur has a rich indigenous history. Home to several prominent Māori tribes, a visit to one of the Māori experiences should be high on your agenda, learn about the special meaning of pounamu-Greenstone with Mountain Jade, explore the geysers and arts of Te Puia or immerse in an evening with Te Pā Tū. An excursion to one of the area's wellness spas is also a must! Try the Polynesian Spa for an invigorating soak in its natural mineral hot springs, Wai Ariki offers an indulging and unwinding restorative journey or pay a quick visit to Secret Spot for a soak and a delicious smash burger! If it is a thrill you are looking for, spike your adrenaline at Rotorua Canopy Tours, soaring above the ancient native forest below. Alternatively, head up the Skyline Rotorua Gondola for soaring lake views, and ride the luge at night for an extra thrill. Make the most of your time in Rotorua with an excursion through the Wai-O-Tapu Thermal Wonderland, one of the area's most colourful volcanic attractions. Whatever you are after, Rotorua is almost certain to have it!

### SUGGESTED ACTIVITY - Mount Tarawera & Orakei Korako Thermal Explorer with Volcanic Air

Combine the thrill of landing on Mount Tarawera with a flight that includes spectacular aerial views of Rotorua's stunning crater lakes, the renowned Tarawera Falls and the vibrant Waimangu and Wai-O-Tapu geothermal reserves. Leaving Wai-O-Tapu, descend to follow the Waikato River to the hidden valley of Orakei Korako. Once landed, you will ferry across the river and begin your land-based tour. Experience hot springs, gushing geysers and the natural beauty of this geothermal wonderland. The return flight takes in views of farmland and the Paeroa mountain range before flying over Rotorua City and returning to the lakefront pier.

### Te Pā Tū Evening Māori Cultural Experience - Dinner Included

New Zealand's Most Awarded Cultural Attraction, presenting Te Pā Tū. Feast on song, drama, tradition, and divine seasonal kai (cuisine) within the forest Pā (village) blanketed by towering Tawa trees, blazing bonfires, and a forest-formed amphitheatre. Te Pā Tū shares Māori history, traditions, and cultural aspirations across 4-hours of celebration and feasting. These events change with each season of the Maramataka, the Māori lunar calendar.

### SUGGESTED ACTIVITY - Wai-O-Tapu Thermal Wonderland

Wai-O-Tapu Thermal Wonderland is a spectacular showcase of New Zealand's colourful and unique geothermal elements sculpted by thousands of years of volcanic activity. You will be introduced to a diversely different natural landscape, extending over 18-sq. km. Enjoy viewing the volcanic features as you walk at your own pace along well-defined tracks. Relax in the first-class Visitor Centre, home to the Gift Shop and Caf'e facilities. Visit the Mud Pool, the largest in New Zealand, it was originally the site of a large mud volcano which was destroyed through erosion in the 1920s. See the history and beauty of the Lady Knox Geyser at 10:15 am every day where a daily eruption happens of up to 20 metres.&nbsp;

### Your accommodation: On the Point

On the Point is a beautiful lodge accommodation in a stunning location and offering panoramic views. It also offers gourmet New Zealand food and wine, as well as a range of on site activities from pampering massage, fly fishing from the private beach, water sports, tennis, gym and boating and is only 10 minutes from the heart of Rotorua.

Meals included:            Breakfast, Dinner



## Day 7



### Rotorua to Waimarino-National Park via Taupō

Today you'll drive from Rotorua to Tongariro National Park along the thermal highway. Pass through Taupō and be sure to check out the Wai O Tapu Thermal Wonderland or Waimangu Volcanic Valley both well worth a visit if you can spare the time. Visit the Huka Falls, New Zealand's largest volume of water or take in the boiling mud pools and steam vents as you wander the nearby geothermal reserve, Craters of the Moon. Continue on to the township of Turangi, known as one of the world's best trout fishing locations before emerging out into Tongariro National Park. Enter the small village Waimarino and enjoy the beautiful scenery that surround it.&nbsp;

## SUGGESTED ACTIVITY - Huka Falls Jet Boat Ride

The Huka Jet is 30 minutes of pure fun and exhilaration, skimming close to cliffs, sliding past trees, feeling the adrenalin of full 360 degree spins. The excitement continues right up to the base of the foaming Huka Falls, where you get a spectacular water level view to New Zealand's most visited natural attraction. Nothing compares to watching 220,000 litres per second tumbling over the cliff face towards you. The water from the mighty Huka Falls runs down the Waikato River through a series of Hydro Power Stations. You'll get a view of the Wairakei Geothermal Power Station in the comfort of a powerful Chevrolet V8 jet boat. This unique Geothermal Power Station uses underground geothermal activity to produce hot steamy water. The Waikato Rivers beautiful environment is varied and unique and is New Zealand's longest river flowing north from our largest lake, Lake Taupō. It is important you read and understand the risks associated with this activity. For more information please see here.

## Sky Waka Gondola Sightseeing Trip with Whakapapa

During the summer months you can take advantage of the skifield facilities and take the gondola over Mt Ruapehu's otherworldly terrain.&nbsp; You'll travel to an altitude of 2020 metres where you'll be treated to magnificent views of Tongariro National Park, including the iconic peaks of Mt Ruapehu, Mt Tongariro and Mt Ngauruhoe, the latter featured as Mt Doom in the Lord of the Rings movies.

### Your accommodation: The Park Hotel Ruapehu

Located in the centre of National Park and is the ideal base for exploring New Zealand's Tongariro Crossing. The on-site Spiral Restaurant & Bar is full of character and is open daily. The outdoor hot tubs, courtyard hammocks & open fireplaces are complimentary for guests and offer the perfect opportunity to relax and unwind after a day of adventure in the Ruapehu region.

Meals included: Breakfast



## Day 8



### Private Guided Tongariro Alpine Crossing with Adrift

For the exclusive guided trips you'll be provided with a really personal, informative and friendly day you will never forget. This trip is tailored so that group sizes are small, your guides are well informed and are able to provide you with an amazing experience. Your guide will also 'work behind the scenes' constantly assessing the weather and track conditions, timing for your Ketetahi personalised transport pick-up at the end of your hike, and other little details that will maximise your enjoyment. They can also tailor the trip to accommodate different fitness levels and know a few tricks about avoiding weather exposed or crowded areas. It is important you read and understand the risks associated with this activity. For more information see here.

### Your accommodation: The Park Hotel Ruapehu

Located in the centre of National Park and is the ideal base for exploring New Zealand's Tongariro Crossing. The on-site Spiral Restaurant & Bar is full of character and is open daily. The outdoor hot tubs, courtyard hammocks & open fireplaces are complimentary for guests and offer the perfect opportunity to relax and unwind after a day of adventure in the Ruapehu region.

Meals included: Breakfast, Lunch



## Day 9



### Whakapapa Village to Waitomo

Head through National Park and across rich rolling farmland to the limestone regions of Waitomo and the famous Waitomo Caves complex.

## Private Footwhistle Glowworm Cave Tour with CaveWorld

Your tour begins as you are picked at the Waitomo iSite and enjoy a scenic shuttle to Caveworld's family owned cave, while your guide provides commentary bringing the rich history of Waitomo to life. Here you will take a short walk through the breathtaking New Zealand bush, keeping an eye out for the native birdlife. Heading down to the entrance of the cave you will discover the beauty of the glowworms, learn about the formation of Footwhistle Cave - known to local Maori as Te Anaroa Cave. You are encouraged to bring along your cameras a tripods to freeze the beautiful twinkling lights in time, with dim solar-powered lights through the cave that allow you to appreciate the magnificent displays and get the perfect shot. Complete your intimate tour with a Kawakawa tea as you relax in a ponga hut nestled into the native surrounds.

---

### Your accommodation: Abseil Inn

Architecturally designed, the Abseil Inn is situated on a ridge overlooking both the Waitomo Caves Village and the beautiful Waitomo Valley. Sited to maximize both views and rural ambience it offers an authentic slice of rural NZ

Meals included:            Breakfast



---

## Day 10



### Waitomo to Auckland City

The lush farmland of the Waikato and the limestone hills of the Waitomo region provide some great scenery as you head north. Visit the Otorohanga Kiwi House en route for a great look at some of New Zealand's native birds in particular our famous flightless namesake.

---

### Depart Auckland today

Explore more of vibrant Auckland city before dropping your rental car at the airport depot and continuing your onward journey.

---

## Tour details

Departures: Daily  
Tour type: North Island Self Drive  
Starts: Auckland  
Finishes: Auckland  
Tour length: 10  
Accommodation: Boutique Lodges & Hotels  
Car/transport type:

---

## Accommodation summary

Day 1	Fable Auckland
Day 2	Fable Auckland
Day 3	Grand Mercure Puka Park Resort
Day 4	Grand Mercure Puka Park Resort
Day 5	On the Point
Day 6	On the Point
Day 7	The Park Hotel Ruapehu
Day 8	The Park Hotel Ruapehu
Day 9	Abseil Inn