

Ultimate Explorer Tour of New Zealand

From Cape Reinga, the tip of New Zealand all the way south to Fiordland National Park, Milford Sound, this tour has something for everyone. You'll begin your adventure in Auckland, where you travel north to the beautiful Bay of Islands. From there you will gradually journey south, enjoying an amazing range of included activities all the way. Highlights of the North Island include snorkelling in the Coromandel Peninsula, a scenic flight in the Bay of Islands and a wine tour in the Hawkes Bay. In the south, there is plenty of adventure and multiple wildlife encounters, including penguins, whales and seals to name a few of the unique creatures you'll meet.

Starts in: Auckland
 Finishes in: Christchurch
 Length: 30days / 29nights
 Accommodation: Motels
 Can be customised: Yes

This itinerary can be customised to suit you perfectly. We can add more days, remove days, change accommodations, mix it up, add activities to suit your interests or simply design and create something from scratch. Call us today to get your custom New Zealand itinerary underway.



Inclusions:

Includes: Late model rental cars

Includes: Unlimited kms

Includes: Airport & ferry terminal rental car fees

Includes: Comprehensive tour pack (detailed itinerary, driving instructions, map/guidebooks, brochures)

Included activity: Electronic Travel Guide and In-Country Support App

Included activity: Hawkes Bay Half Day Wine Tour with Grape Escape

Included activity: Interislander Ferry Wellington to Picton

Included activity: Ocean's Cabin with Whale Watch Kaikōura

Included activity: Glacier Explorers

Included activity: Wilderness Jet Experience with Dart River Safaris

Included activity: TransAlpine Scenic Train: Greymouth to Christchurch

plus much more...

Includes: Fully inclusive rental car insurance (excess may apply)

Includes: GPS navigation

Includes: Additional drivers

Includes: 24/7 support while touring New Zealand

Included activity: Private Transfer Auckland Airport to your Auckland Accommodation with Tourcorp

Included activity: Zealandia by Night Wildlife Sanctuary Tour

Included activity: Seals, Beach Cruise and Walk with Wilsons - Includes Lunch

Included activity: Christchurch Gondola

Included activity: Milford Sound Cruise with Real NZ - Lunch Included

Included activity: Franz Josef Glacier Helihike with Franz Josef Glacier Guides

Included activity: Shared Transfer from Christchurch Train Station to Christchurch CBD Accommodation with Christchurch Touring Company

Day 1



Private Transfer Auckland Airport to your Auckland Accommodation with Tourcorp

You will be met at the Auckland airport by the driver and transferred to your Auckland accommodation.

Welcome to Auckland

Kia ora! Welcome to Auckland, known in Māori as Tāmaki Makaurau. Auckland is New Zealand's vibrant "City of Sails," and the country's largest metropolitan area. Nestled between the Pacific Ocean and the Tasman Sea, it offers something for everyone. Surrounded by native bush, lush rainforests, and pristine beaches, Auckland is a haven for both adventurers and urban explorers. Wander through world-class museums and galleries in the city centre or enjoy a peaceful retreat at the Auckland Gardens, where stunning landscapes showcase New Zealand's diverse flora. Stroll along the lively waterfront to savour fresh seafood and international cuisine at the Viaduct restaurants. For an unforgettable perspective, ascend the iconic SkyTower, New Zealand's tallest structure, and take in panoramic views of the city and its picturesque islands.

SUGGESTED ACTIVITY - Harbour Sailing Dinner Cruise with Explore

This unique on-water sailing and dining experience is not to be missed while you're in Auckland. Enjoy smooth sailing on the Waitemata Harbour - then watch this photogenic city come alive with twinkling lights. Enjoy your meal as you sail around the beautiful Auckland Harbour taking in the view as the sun slowly sets. You'll be treated to canapes and a drink as you set off towards Westhaven Marina. To finish the evening off, savour your dessert course as you leisurely sail back to Auckland's vibrant Viaduct Harbour.

Your accommodation: Nesuto Stadium Hotel and Apartments

Nesuto Stadium offers a comfortable self-contained apartment in downtown Auckland. Located a short walk from Britomart Transport and the Viaduct. Enjoy your stay in central Auckland surround by delicious eateries or use your in-house kitchenette to dine in!



Day 2



Collect Rental Car

Choose a car to best suit your needs from our fantastic rental car range. From compact economy, hatchbacks to prestige SUVs.

Car Instructions

On collection of your rental car, you will be required to sign a rental agreement and provide a credit card for a security bond authorisation. Remember, the bond is only authorised, not charged, at this stage. While your rental rate may include coverage for mechanical breakdowns (please verify your specific car inclusions), you may also have the option to purchase roadside assistance for non-mechanical issues. All drivers must present a physical debit or credit card, valid driving license and passport to be added to the agreement, with potential additional charges for extra drivers. If you are presenting an international drivers license, this must be accompanied by the original domestic license. Drivers under 21 are not permitted, and those aged 21-24 may face a surcharge, both payable directly to the rental company. For detailed information, please refer to your rental car inclusions. See this important information if you are traveling between the North and South Islands on the ferry

Explore Auckland

Perched on the edge of a large natural harbour, New Zealand's 'City of Sails' offers the best of both worlds. Sandy beaches, native bush and lush rainforests give way to a vibrant urban culture, humming with life. Spend time in the Viaduct Harbour, try your hand at sailing an America's Cup yacht or take the ferry to nearby Waiheke Island for a gourmet food and wine experience. If you're looking for a lovely walk, venture to the top of Auckland's highest volcano, Mt Eden, and take in soaring views of the gulf or hop on the short ferry to Rangitoto Island and hike to the top of the volcanic island. Immerse yourself in nature's beauty at the expansive Auckland Botanical Garden's, sprawled across 156 acres of lush land and native forest on Hill Road. Pack a picnic, soak up the sunshine, and delight in the melodious birdsong during a peaceful lunch. Head up to the Sky Tower, standing at just over 300m tall (about 1,000 feet) and have a meal in the 360-degree revolving restaurant. Scale the outermost perimeter of the Harbour Bridge or test your stomach and bungee off both. To end your day, catch a cab to Ponsonby Road and sample some upmarket culinary delights.

SUGGESTED ACTIVITY - Full Day Taste of Auckland Tour with Bush and Beach - Lunch Included

Start your day in central Auckland, exploring The Domain, Ponsonby, and the North Shore. Stroll along Narrow Neck Beach in Devonport and enjoy panoramic views from Mt Victoria. Visit the Viaduct Harbour's fish market and yachting precinct before heading northwest to Kumeu, Auckland's Heritage Wine Region. Savour lunch at a vineyard restaurant, sample world-renowned wines, and visit Muriwai Beach, where you can observe majestic gannets in their natural habitat against the stunning Tasman Sea backdrop.

Your accommodation: Nesuto Stadium Hotel and Apartments

Nesuto Stadium offers a comfortable self-contained apartment in downtown Auckland. Located a short walk from Britomart Transport and the Viaduct. Enjoy your stay in central Auckland surrounded by delicious eateries or use your in-house kitchenette to dine in!



Day 3



Auckland to Paihia

The drive from Auckland to the Bay of Islands takes approximately 3.5 hours, but allow extra time to enjoy the sights along the way. Pause for a breath of fresh salty air in Whangarei, where you can explore scenic highlights like the Whangarei Falls or the lively Town Basin. Further along, take a break in Kawakawa known for its quirky, world-famous Hundertwasser Toilets. As you approach Paihia, the gateway to the Bay of Islands, soak in the stunning views of native bush and endless golden beaches that define this iconic Northland region.

Explore Bay of Islands

Commonly known as the 'winterless north', New Zealand's Bay of Islands is made up of over 140 subtropical atolls. Renowned for its untouched beaches, abundant marine life, and idyllic climate, this tropical paradise ticks all the boxes. Spend some time on a remote stretch of beach, or see the dolphins on an ocean safari. If diving is your thing, take the morning to descend the Rainbow Warrior - The Greenpeace flagship sunk by French saboteurs in 1985. Wander around Russell, a whaling port founded in 1843. Learn about our culture in historic Waitangi, the site where The Treaty of Waitangi was signed in 1840 between the Māori and Europeans. Alternatively, you may like to take a day tour to Cape Reinga, the very top of the North Island.

Your accommodation: Sea Spray Suites

Sea Spray Suites offers comfortable and relaxing accommodation close to Paihia's best activities and attractions. Directly across the road is the beautiful Te Ti Beach, exploring Paihia's beautiful waters and wildlife is only a short step away. If you are interested in experiencing New Zealand's heritage, The Waitangi Treaty House is only 1km away.



Day 4



Cape Reinga Scenic Flight and Guided Tour with Salt Air

Experience the beauty of the North from both air and land. Take a spectacular scenic flight to Cape Reinga over Whangaroa Harbour and the Rangaunu Harbour as well as Coopers Beach, Doubtless Bay and Ninety Mile Beach.

Your accommodation: Sea Spray Suites

Sea Spray Suites offers comfortable and relaxing accommodation close to Paihia's best activities and attractions. Directly across the road is the beautiful Te Ti Beach, exploring Paihia's beautiful waters and wildlife is only a short step away. If you are interested in experiencing New Zealand's heritage, The Waitangi Treaty House is only 1km away.



Day 5



Paihia, Bay of Islands to Snells Beach via Waipoua

From the Bay of Islands you will head west, leaving the Pacific Ocean for the wilder shores of Hokianga and the Tasman Sea. Small towns Omapere and Opononi are reminiscent of days gone by with a vintage seaside feel and are the perfect place to stop for an ice cream in a hot day. To the south is the Kauri coast, which you're about to explore. Head south into the Waipoua Forest, home to giant Kauri trees. Allow time for one of a number of short walks available in the area. Not to be missed is the five minute loop to view the largest Kauri in New Zealand, Tane Mahuta. Backtrack cross-country to the Matakoho Kauri Museum an award winning museum with extensive historical displays. Continue on the road to Snells Beach, a lovely little township close to Warkworth. If you arrive in plenty of time, head into Matakana Wine Country for some great dining options. Another must do while you're here is a day excursion to one of many deserted beaches in the Tawharanui Marine Reserve.

Your accommodation: Snells Beach Motel

Snells Beach Motel is perfectly situated, on the Mahurangi East Peninsula, overlooking the beautiful Kawau Bay and in the heart of the wonderful Matakana Coast Wine Country area.



Day 6



Snells Beach to Coromandel Township

Leave Snells beach, driving from Warkworth and pass through Auckland. As you leave the city boundaries you'll note a change in landscape to lush rolling farmland. Cross the Hauraki Plains, one of the largest dairy producing regions in New Zealand, and take in the abundance of black and white Friesian cows. You'll go through the Thames Estuary, a haven for wildlife - in particular shore birds. If you're keen on birds, a detour to Miranda is worthwhile to spot the many godwits and oystercatchers. Arriving in the old gold town of Thames you have the option of two routes to the Coromandel. Take the road over the ranges and Highway 25A will deliver you to the coast in 45 minutes. If you're up for a little longer, more scenic drive, take the route via the Pohutukawa Coast, north to the Coromandel Township. Known as one of the most spectacular drives in the region, it is well worth your time if you can spare the extra minutes.

Driving Creek Railway & Potteries - EyeFull Tower Tour

Driving Creek Railway and Potteries has become a Coromandel icon. The dream of Barry Brickell was to establish a pottery workshop on his land. Using a railway he would have access to the clay on the land and the pine kiln fuel. Over the next 15 years the railway developed until in 1990 it was finally licensed to carry fare paying passengers and ever since thousands of visitors have made the trip to Coromandel to experience this unique attraction. The 1 hour return train trip on the innovatively designed trains takes you through replanted native kauri forest and includes 2 spirals, 3 short tunnels, 5 reversing points and several large viaducts as it climbs up to the mountain-top terminus. The pottery is still producing and you can watch the artists at work as well as purchase items. It is important you read and understand the risks associated with this activity. For more information please see [here](#).

Coromandel Township to Whitianga

The short drive from Coromandel Township to Whitianga takes you via the scenic coastline of Whangapoua Harbour and the Kuaotuna beach. For beach lovers there are plenty of side roads to often deserted golden sand beaches and bays. Whitianga sits on Mercury Bay on the eastern coast of the Coromandel peninsula, Captain Cook arrived there in 1769 to observe the transit of Mercury and hence the bay was named. This small bustling town once played a major part in the kauri logging industry with over 150 million metres of timber being exported between 1830 and the end of the century. The Whitianga museum, housed in the old dairy factory displays an interesting collection designed to relay engrossing tales of the time. Today the town has a many cafes and craft shops with its income derived mainly from tourists. The summer months bring visitors to enjoy fishing, surfcasting and swimming along the palm fringed beaches. But the largest attraction is probably the big game marlin fishing with many charters available to hunt in the rich waters of the Pacific Ocean. On the other side of the harbour is Australasia's oldest stone wharf from where a passenger ferry takes visitors to the delightful Cooks Beach just a 5 minute walk along the road. Nearby is Buffalo Beach, named after H.M.S. Buffalo, a ship taking convicts and settlers to South Australia that blew aground in 1840.

Your accommodation: Aotearoa Lodge

Situated on two and a half acres of tranquil gardens and within a five minute stroll to beautiful Buffalo Beach. A perfect base to explore the whole of the Coromandel Peninsula being close to Cathedral Cove, Hot Water Beach, New Chums Beach and the magnificent Coromandel bush.



Day 7



Coves, Caves and Coastline Cruise from Whitianga

Explore the volcanic coastline with its many caves, blowholes and golden beaches all from the comfort and safety of an ex coastguard 28 ft cruiser. Departing from Whitianga Wharf journey past the towering Shakespeare's Cliffs and historic Cooks Beach. Visit Cathedral Cove and the islands in the marine reserve. There is also a chance to swim with the abundant fish in the reserve (on board snorkel gear provided - don't forget your swimsuit and towel). For those who prefer to stay dry an underwater camera relays images to an onboard TV.

Explore Whitianga

Whitianga is located at Mercury Bay on the eastern coast of the Coromandel peninsula, a 3 hour drive from Auckland and 1 1/2 hours from Thames. Captain Cook arrived there in 1769 to observe the transit of Mercury and hence the bay was named. This small bustling town once played a major part in the kauri logging industry with over 150 million metres of timber being exported between 1830 and the end of the century. The Whitianga museum, housed in the old dairy factory displays an interesting collection designed to relay engrossing tales of the time. Today the town has a many cafes and craft shops with its income derived mainly from tourists. The summer months bring visitors to enjoy fishing, surfcasting and swimming along the palm fringed beaches. But the largest attraction is probably the big game marlin fishing with many charters available to hunt in the rich waters of the Pacific Ocean.

On the other side of the harbour is Australasia's oldest stone wharf from where a passenger ferry takes visitors to the delightful Cooks Beach just a 5 minute walk along the road. Nearby is Buffalo Beach, named after H.M.S. Buffalo, a ship taking convicts and settlers to South Australia that blew aground in 1840. As well as Opito Bay, Flaxmill Bay and Kuaotuna Beach to name but a few of the many locations easily visited from Whitianga, the region is well worth a visit.

Hot Water Beach

Known for its naturally heated geothermal springs, you can dig a spa pool in the sand during low tide and soak in the warm waters while enjoying breathtaking coastal views. With its golden sands, dramatic surf, and tranquil surroundings, Hot Water Beach is the perfect blend of relaxation and adventure.

Your accommodation: Aotearoa Lodge

Situated on two and a half acres of tranquil gardens and within a five minute stroll to beautiful Buffalo Beach. A perfect base to explore the whole of the Coromandel Peninsula being close to Cathedral Cove, Hot Water Beach, New Chums Beach and the magnificent Coromandel bush.



Day 8



Whitianga to Rotorua via Tauranga

Heading south from the Coromandel Peninsula you pass through the seaside town of Whangamata, a popular location for Kiwi holidaymakers and home to one of the best beaches in the region. Next, you come to the old mining town of Waihi which still has an operating open cast gold mine (Martha Mine) that can be viewed from a vantage point just above the town centre.

For rail enthusiasts, the Goldfields Railway operates passenger trains along a scenic and historic section of track towards Waikino. The route now takes you into the Bay of Plenty and the port town of Tauranga before you head along the scenic Pyes Pa Road to Rotorua. For Lord of the Rings fans, a detour to Matamata is recommended as this is the location of the Hobbiton film set. Arriving in Rotorua from the north you are welcomed by the spectacular view of the lake.

Your accommodation: Silver Fern Suites & Spa

Silver Fern Suites & Spa is located just minutes from Rotorua's city centre and is close to popular thermal attractions, cafes, restaurants and golf courses. Suites have a private spa pool or double spa bath for you to unwind and relax.



Day 9



Te Puia: Te Rā Daytime Experience

Te Puia welcomes you to explore the magic hidden within Te Whakarewarewa Thermal Valley. Become face-to-face with the majestic Pōhutu Geyser, the largest naturally active geyser in the Southern Hemisphere. Feel the thrill as it erupts, sending plumes of steam into the sky. Then, step into the Kiwi Conservation Centre, for a close-up encounter with this rare native species, a symbol of our nation's unique wildlife. Part of your ticket is donated to support the conservation of the Kiwi in this sanctuary. As you continue through the Te Puia Valley, look upon the dynamic landscape of bubbling mud pools, and steaming vents and feel the power that the land holds. Throughout this, everywhere you look you will see beautifully crafted Māori-made artwork and sculptures, each piece a story carved in wood and stone, adding a layer of cultural depth to the natural beauty. Step into the New Zealand Māori-made artwork and sculptures, each piece a story carved in wood and stone, adding a layer of cultural depth to the natural beauty. The guides are direct descendants of the original tour guides, and you can feel their excitement to show their culture and land.

Original Ziplining Experience with Rotorua Canopy Tours

Embark on a three-hour adventure through the native New Zealand forest. Journey through the beautiful forest canopy via an incredible network of trails, tree platforms, Ziplines and swing bridges. See breathtaking views of the woodland valleys and hills as you fly through tight openings in the trees. In between the thrill of the ziplines and suspended tree bridges, your guides will share their passion and knowledge for the forest and the conservation challenges to preserve it. It is important you read and understand the risks associated with this activity. For more information see [here](#).

SUGGESTED ACTIVITY - National Kiwi Hatchery Experience

The National Kiwi Hatchery Experience is a special opportunity to gain insight into and view this highly regarded conservation centre. Developed with the visitor experience in mind, the hatchery boasts special viewing opportunities and is hosted by kiwi expert guides who ensure guests leave fully informed and all questions answered. Learn all about New Zealand's intriguing national icon and the efforts of the kiwi husbandry team, see and discover what it takes to hatch and rare chicks, and if you're lucky see baby chicks in person!

Your accommodation: Silver Fern Suites & Spa

Silver Fern Suites & Spa is located just minutes from Rotorua's city centre and is close to popular thermal attractions, cafes, restaurants and golf courses. Suites have a private spa pool or double spa bath for you to unwind and relax.



Day 10



Rotorua to Napier

This drive will take you through the thermal region just south of Rotorua. Home to a plethora of unique geothermal attractions including boiling mud pits, natural hot springs and steaming geysers, this area is a must do before you move on to Napier. Notable attractions are Wai-O-Tapu, Waimangu and Craters of the Moon.

Continue on to Taupō and marvel at the lake, a giant crater formed following a volcanic eruption in the year 180 CE. As you approach the town, be sure to stop at Huka Falls to view the spectacular sight of hundreds of cubic metres of water spilling every second down the narrow 11 metre drop. For an extra thrill take a jet-boat ride at the base of the falls. Leaving Taupō, follow the road as it climbs the rugged Ahimanawa Range before descending back down the Pacific Coast to art deco coastal township of Napier.

SUGGESTED ACTIVITY - Huka Falls Jet Boat Ride

The Huka Jet is 30 minutes of pure fun and exhilaration, skimming close to cliffs, sliding past trees, feeling the adrenalin of full 360 degree spins. The excitement continues right up to the base of the foaming Huka Falls, where you get a spectacular water level view to New Zealand's most visited natural attraction. Nothing compares to watching 220,000 litres per second tumbling over the cliff face towards you.

The water from the mighty Huka Falls runs down the Waikato River through a series of Hydro Power Stations. You'll get a view of the Wairakei Geothermal Power Station in the comfort of a powerful Chevrolet V8 jet boat. This unique Geothermal Power Station uses underground geothermal activity to produce hot steamy water. The Waikato Rivers beautiful environment is varied and unique and is New Zealand's longest river flowing north from our largest lake, Lake Taupō.

SUGGESTED ACTIVITY - Wai-O-Tapu Thermal Wonderland

Wai-O-Tapu Thermal Wonderland is a spectacular showcase of New Zealand's colourful and unique geothermal elements sculpted by thousands of years of volcanic activity. You will be introduced to a diversely different natural landscape, extending over 18-sq. km. Enjoy viewing the volcanic features as you walk at your own pace along well-defined tracks. Relax in the first-class Visitor Centre, home to the Gift Shop and Caf  facilities. Visit the Mud Pool, the largest in New Zealand, it was originally the site of a large mud volcano which was destroyed through erosion in the 1920s. See the history and beauty of the Lady Knox Geyser at 10:15 am every day where a daily eruption happens of up to 20 metres.

Your accommodation: Bella Vista Napier

Bella Vista Motel Napier invites you to experience its friendly service and modern motel units. Located close to shops, restaurants and the renowned Marine Parade with its majestic Norfolk pines.



Day 11



Napier City

Napier, a coastal gem, is famed for its 1930s Art Deco architecture, the annual Art Deco Weekend, stately Norfolk pines, nearby wineries, and fresh local produce. With a Mediterranean climate and over 2,200 hours of sunshine annually, it boasts a thriving caf  culture set against stunning heritage buildings. The city center has around 30 caf s within walking distance, while Ahuriri, just beyond Bluff Hill, offers more upscale dining. Marine Parade overlooks the Pacific Ocean and Cape Kidnappers, home to the world's largest mainland gannet colony. Visitors can explore Ocean Spa, the Hawke's Bay Museum, and the National Aquarium of New Zealand.

Bluff Hill, a key landmark, provides sweeping views of Napier, Perfume Point, Westshore Beach, and the busy Port of Napier, which exports timber, fruit, and meat worldwide.

In 1931, Napier was devastated by a 7.8-magnitude earthquake, New Zealand's worst natural disaster. Fires ravaged the city, leaving 258 dead and many injured. Rebuilding efforts transformed Napier and Hastings into modern cities, while the uplifted Ahuriri Lagoon created much-needed land for expansion.

Hawkes Bay Half Day Wine Tour with Grape Escape

This wine tasting tour is designed for casual imbibers and wine aficionados. Meet like-minded people and share an appreciation of Hawke's Bay's fantastic wines. Taste great wines made with passion and learn of the area's unique growing conditions. Take home outstanding wines and wonderful memories. Join a fun-filled wine tasting afternoon in the sun driving through absolutely stunning scenery. Meet like-minded people and share an appreciation of this region's fantastic wine. Visit four to five wineries and enjoy a cheese platter on the grounds of the Ngatarawa Vineyard beside the lily pond.

Your accommodation: Bella Vista Napier

Bella Vista Motel Napier invites you to experience its friendly service and modern motel units. Located close to shops, restaurants and the renowned Marine Parade with its majestic Norfolk pines.



Day 12



Napier to Martinborough

As you leave the rolling countryside of the Hawke's Bay you'll be greeted with some of the country's richest dairy farmland in the Manawatu Gorge. Continue on through the Wairarapa region and stop in the Pukaha Mount Bruce Wildlife Centre, where you can see some of New Zealand native animals. Take another break in Masterson, and visit the interactive Woolshed Museum to learn about sheep farming in New Zealand. As you drive south, a visit to historic Greytown is a must-do. Take in the restored Victorian buildings and make time for a cup of tea at one of its quaint cafes. Leaving state highway 2 you will cross over the Ruamahanga River into Martinborough wine country your destination for the day.

SUGGESTED ACTIVITY - Martinborough Half Day Wine Tour with Martinborough Wine Tours

Visit wonderful vineyards such as Te Kairangi Wines, Tirohana Estate, Cabbage Tree Vineyard and Martinborough Vineyard on this half day tour of the premium wine region of Martinborough. Taste the wines, learn about the development of the region, its people and characters from knowledgeable guides.

Your accommodation: The Claremont, Martinborough

Set just outside the main village, The Claremont is the ideal base for you to enjoy everything the region has to offer. Well-appointed, self-contained apartments and units will make your stay very comfortable.



Day 13



Martinborough to Wellington City

Cross the Remutaka Ranges as you make your way to New Zealand's capital city, Wellington. Often compared to Melbourne, Wellington is vibrant cultural hub. Home to the nation's centre of government. Legislation happens in the aptly named 'Beehive', an executive wing attached to the Houses of Parliament. At 1km squared, the city centre (easily traversed on foot) has an international feel and is peppered with underground art shows, alleyway cafes and New York style delis. Take in the boardwalk view as you stroll to Te Papa Museum or indulge your cinematic side exploring Weta Workshop, the Oscar Award winning design studio for Lord Of The Rings. For a taste of vintage fashion, spend some time (and dollars!) on Cuba Street browsing the boutiques. Work off last night's dinner with a cycling tour of Oriental Bay and undo your good work with a Hokey Pokey ice-cream in the sun. For those heading further down, the capital is where you board the ferry crossing the Cook Strait to the South Island.

Zealandia By Night Wildlife Sanctuary Tour

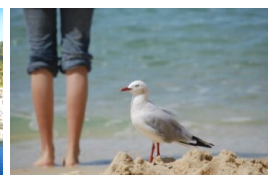
Taking a night tour of Zealandia wildlife eco-sanctuary is an unforgettable experience and one that comes highly recommended. A conservation success and safe haven for some of New Zealand's rarest native animals, Zealandia is home to many remarkable species of birds, reptiles and insects living wild within a beautiful 225 hectare (one square mile) valley, just 10 minutes from the central city.

Your accommodation: Bella Vista Wellington

Bella Vista Wellington is just 5 minutes walk from local beaches and the beautiful waters of Evans Bay. Enjoy the convenience of being located in close proximity to the Wellington CBD, shops, entertainment and other activities.



Day 14



Interislander Ferry Wellington to Picton

The 92 km journey between Wellington and Picton takes around 3 hours and has been described as 'one of the most beautiful ferry rides in the world'. Leaving Wellington Harbour the ferry passes many interesting points such as Pencarrow Head on top of which is New Zealand's oldest lighthouse (1859). Red Rocks is home to a seal colony and Oterangi Bay is the site which recorded the country's highest ever wind speed of 268 kph (167 mph).

From the Cook Strait spectacular views of the Kaikōura Ranges on the South Island can be enjoyed and dolphins and many sea birds are often seen. Around one hour of the cruise takes you through the Marlborough Sounds and this region of bush covered mountains, small islands, crystal clear waters and secluded bays offer remarkable photographic opportunities. The final leg of the cruise travels through Queen Charlotte Sound before coming to an end in the picturesque town of Picton.

Collect Rental Car

Choose a car to best suit your needs from our fantastic rental car range. From compact economy, hatchbacks to prestige SUVs.

Picton to Abel Tasman National Park

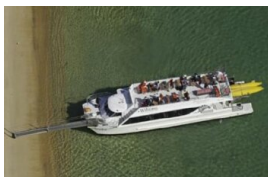
From Picton you'll first travel the Marlborough Sounds coastline between Picton and Havelock. This drive offers spectacular views of the sounds, so be sure to allow plenty of time for stops and sightseeing. Take moment to explore the secluded sandy coves along the narrow road to Portage. Aim to arrive in Havelock for lunch, as this portside town has a great variety of cafes and restaurants to eat at. Stop at the famous Pelorus bridge, just outside of Havelock. From here there are a number of forest walks to stretch your legs on with the most popular being a 30 minute loop through beech, rimu and totara forest. Continue on over the Bryant Range to arrive into Tasman Bay and the city of Nelson. Motueka is a further 45 minutes along the coast and from there it's just a short drive to Kaiteriteri and Marahau, all ideal spots from which to explore the beautiful Abel Tasman National Park.

Your accommodation: Ocean View Chalets

The Ocean View Chalets are situated on a 50-acre farmlet, slightly elevated and nestled along the bush line with panoramic sea views. Great access the National Park and close to the friendly Marahau village.



Day 15



Seals, Beach Cruise and Walk

Experience the best of Abel Tasman on this combined beach cruise and walk tour. Cruise into the Tonga Island Marine Reserve and pause to watch the antics of the Resident Fur Seal Colony. After landing at the historic Tonga Quarry Beach, take a two hour, fifteen minute walk over forested land and around the spectacular Bark Bay Estuary, renowned for its cascading waterfalls. Rejoin the cruise at the sheltered golden cove on Medlands Beach.

Your accommodation: Ocean View Chalets

The Ocean View Chalets are situated on a 50-acre farmlet, slightly elevated and nestled along the bush line with panoramic sea views. Great access the National Park and close to the friendly Marahau village.

Meals included: Lunch



Day 16



Abel Tasman National Park to Kaikōura

Enjoy a stunning journey from the golden beaches of Abel Tasman National Park to the coastal haven of Kaikōura. Travel through the scenic landscapes of the Marlborough region, passing lush vineyards and rugged mountains. You will pass through Marlborough and Blenheim, New Zealand's largest wine-growing regions - and home to many award-winning wines. We recommend timing your day to arrive for lunch with a view to sampling some of the local offerings at one of the 40-plus wineries surrounding the area. Continue over the dry hills of the Marlborough Ranges to one of the most spectacular coastlines in the world, Kaikōura. For over 50km's (30 miles) follow the shoreline. Keep an eye out for an abundance of seals, seabirds and other native wildlife. Kaikōura is also one of the only places in the world where whales can be seen all year round. To the east, you'll see the Pacific Ocean while the West brings views of the towering Kaikōura ranges. Arriving in the Kaikōura township, you'll find it bustling with cafes and restaurants.

Your accommodation: The White Morph, Kaikōura

Set on the Esplanade in Kaikōura, The White Morph enjoys commanding views of the ocean and mountains. Just a 10-minute walk into town, The White Morph has been beautifully placed so that you can take in the spectacular scenery of Kaikōura while enjoying the variety of attractions on offer.



Day 17



Kaikōura

Kaikōura is a breathtaking seaside town teeming with marine life and natural beauty. As you wander through this coastal paradise, you'll be enveloped by the fresh sea breeze and the sounds of the ocean. Begin your adventure by observing the lively fur seal colony at the tip of the peninsula. For an unforgettable experience, board a boat to go whale watching and marvel at the majestic whales that call these waters home year-round. If you're feeling adventurous, take the plunge and swim with the playful dusky dolphins in their natural habitat. For bird enthusiasts, Kaikōura offers the chance to get up close with the native albatross, an awe-inspiring sight. The town is rich with attractions, walking tracks, and activities for every visitor. A walk around the Kaikōura Peninsula is a must, where you can explore tide pools teeming with marine life, observe sea creatures basking on the rocks, and watch seabirds soaring above. Be sure to keep a respectful distance from the sleeping sea lions you might encounter along the way. Ohau Point is another highlight, where you can watch fur seals frolic in their natural environment. To delve into Kaikōura's fascinating history, visit Fyffe House. This historic whaler's cottage offers a glimpse into the town's whaling past and its evolution over the years. No trip to Kaikōura is complete without sampling the local seafood. Renowned for having some of the best fish and chips in the country, Kaikōura's eateries serve fresh catches straight from the morning's haul, ensuring a delicious and authentic dining experience. If you need a break from the action, unwind at Lavendyl Lavender Farm. Stroll through the fragrant lavender fields, relax in the serene atmosphere, and browse the gift shop for a variety of lavender products. Kaikōura seamlessly blends adventure, history, and relaxation, making it a perfect destination for travellers seeking a unique and enriching experience.

Ocean's Cabin with Whale Watch Kaikōura

Experience New Zealand's only marine-based whale-watching company. Whale Watch Kaikōura offers a once-in-a-lifetime, up-close encounter with the giant Sperm Whale. You are also likely to encounter New Zealand fur seals, dolphins, and albatross. Depending on the season you may also see Pilot, Blue, and Southern Right whales as well as migrating humpbacks. Often orcas can be spotted here and the world's smallest dolphin, the Hector's, occasionally makes an appearance.

Your accommodation: The White Morph, Kaikōura

Set on the Esplanade in Kaikōura, The White Morph enjoys commanding views of the ocean and mountains. Just a 10-minute walk into town, The White Morph has been beautifully placed so that you can take in the spectacular scenery of Kaikōura while enjoying the variety of attractions on offer.



Day 18



Kaikōura to Christchurch

Travel down the coast before heading inland through the North Canterbury wine region - the Waipara Valley. If you've time on your hands we recommend taking a detour to Hanmer Springs for relaxing dip in its thermal pools. Arriving into Christchurch you'll see a new and improved city, steadily rising from the ruins of the 2011 and 2010 earthquakes.

Your accommodation: Terra Vive Luxury Suites and Apartments

Terra Vive Luxury Suites and Apartments offer luxury accommodation in the heart of Christchurch City. Situated within the beautiful tree-lined street of Bealey Avenue, Terra Vive is ideally located in close proximity to the shops, restaurants and cafes.



Day 19



Explore Christchurch

Following earthquakes that razed its centre and much of the outlying suburbs, Ōtautahi-Christchurch is well into a billion-dollar makeover. In the middle of the Canterbury Plains, bordering the Pacific Ocean, New Zealand's newest city is an ideal gateway to exploring the middle of the South. Go punting on the Avon River, take a historic tram ride, catch the gondola to the rim of an extinct volcano or do all three! See the world's only Cardboard Cathedral and for nature enthusiasts - wander the renowned Christchurch Botanic Gardens, or head to Oxford Terrace in the city to find a great spot to eat or drink. Drive an hour in any direction to ski, mountain bike, wine taste, whale-watch, bungee jump or play golf. Take the winding Port Hills road to the French settlement of Akaroa & Banks Peninsula and tour the vines in Waipara for an authentic New Zealand wine-tasting experience.

Christchurch Gondola

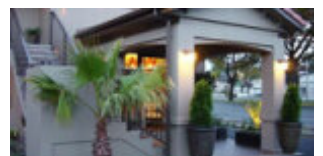
In the Heathcote Valley, just a 20-minute drive from the heart of Christchurch City, ride the Christchurch Gondola for nearly a kilometer to the collapsed rim of an extinct volcano, which exploded six million years ago. Take in the spectacular panoramic views of the central city, Lyttelton Harbour, Banks Peninsula, Canterbury Plains, and the distant peaks of the Southern Alps. Wander the summit complex, enjoy a coffee or lunch in the cafe, and choose one of many nature walks to explore or visit the Christchurch Discovery Ridge, a dramatic reconstruction of the history of the Port Hills and Christchurch.

SUGGESTED ACTIVITY - Real New Zealand Tours - Christchurch City, Sheep Farm & Wine Tour - Lunch Included

Explore Christchurch, New Zealand's second-largest city known for its English Gothic architecture and heritage, situated on New Zealand's South Island East coast. Enjoy the tranquil Avon River, Hagley Park, and the beautiful Christchurch Botanic Gardens. Discover our new roof-topped stadium (due for completion in 2026), the transitional cardboard Cathedral, and delightful New Regent Street. Heading north to visit Glenafic Farm, a 770ha spectacular coastal sheep and beef property. With Corriedale and South Suffolk sheep and Hereford cattle, this authentic working farm supports two families and three generations. Witness sheep shearing, try for yourself, and admire very clever well-trained farm dogs. Experience a unique farm tour with a vintage tractor and trailer ride. Enjoy a delicious lunch before travelling to the award-winning Waipara wine region for a wine tasting and then returning to Christchurch City Centre.

Your accommodation: Terra Vive Luxury Suites and Apartments

Terra Vive Luxury Suites and Apartments offer luxury accommodation in the heart of Christchurch City. Situated within the beautiful tree-lined street of Bealey Avenue, Terra Vive is ideally located in close proximity to the shops, restaurants and cafes.



Day 20



Christchurch to Aoraki-Mt Cook National Park

Drive through the heart of the South Island, crossing the vast Canterbury plains. Catch your breath in Geraldine before continuing through Fairlie. Ascending Burkes pass you'll come to the picturesque town of Lake Tekapo. Follow the road and take in the view of Aoraki-Mt Cook (New Zealand's tallest mountain) from the shores of Lake Pukaki, known for its glacier fed turquoise blue colour. Continue along the lake to your final destination Aoraki-Mt Cook Village.

Glacier Explorers

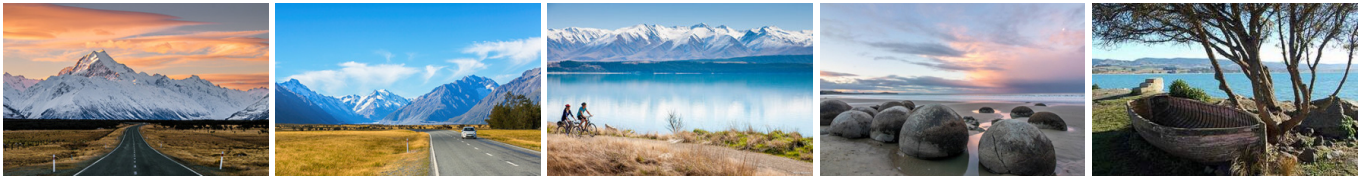
Experience 500-year-old icebergs up close on the Aoraki-Mt Cook terminal lake. The Glacier Explorers tour is the only one of its kind in New Zealand and one of only three in the world! Very few glaciers terminate into lakes and even fewer of them are accessible. See towering ice cliffs and floating icebergs from the safety of a specially designed boat. These boats provide a safe way to view unseen and inaccessible areas of New Zealand's largest glacier The Tasman.

Your accommodation: Mt Cook Motel

Mt Cook Motel, nestled in the heart of Mt. Cook Village, offers spacious self-contained units that provide comfort and convenience. Each unit is surrounded by breathtaking alpine mountain views, making it the perfect retreat for nature lovers and adventurers alike.



Day 21



Aoraki Mt Cook National Park to Dunedin

Leave Aoraki Mt Cook National Park and travel past Twizel, one of the locations for the Lord of the Rings films. Go through Omarama, the gliding capital of New Zealand. Continue down the Waitaki Valley follow the hydro power generating system towards the east coast. Stretch your legs in Oamaru, known for its white stone buildings constructed with the local Oamaru Stone and Steampunk influence. If you were a little late off the mark this morning you may get the chance to see the blue penguins come ashore at dusk. Continue south down the coast to Moeraki, and take a detour towards the beach to see the Moeraki Boulders, a unique geological feature well worth a look. As you arrive in Dunedin, take in the city's Edwardian and Scottish heritage reflected in the buildings around the city centre The Octagon.

Your accommodation: Motel on York

Motel on York is located in the heart of Dunedin city. The property offers superior accommodation only 300 metres away from cafes and restaurants.



Day 22



SUGGESTED ACTIVITY - Wildlife Peninsula Encounter Tour and Wildlife Cruise with Monarch

Join a small-group bus tour led by a local guide across the Otago Peninsula, featuring stunning harbour views, rural landscapes, and unique wildlife. Visit a remote beach to spot sea lions, take a Monarch Wildlife Cruise to see albatross, seals, and rare seabirds, and explore a Yellow-eyed Penguin conservation reserve with hidden viewing hides. This unforgettable journey blends breathtaking scenery with intimate wildlife encounters before a relaxed return to Dunedin.

Dunedin

Dunedin, known in Māori as Ōtepoti, is referred to as the "Edinburgh of the Southern Hemisphere". The city has a rightly deserved reputation as one of the best-preserved Victorian and Edwardian cities in the Southern Hemisphere. Of particular note is Dunedin Railway Station, built 1904 - 1906, and St Paul's Cathedral in the Octagon. The Otago Museum is renowned for its Māori and Pacific Island collections and natural history displays. A visit to the Speights, New Zealand's oldest brewery, is also considered a must while in Dunedin. The Botanic Gardens is a great spot and at the right time of year, you can witness the Rhododendron Dell in bloom. The Otago Peninsula is the only home in the world to the Northern Royal Albatross. The Peninsula can be visited for the day from Dunedin and the stunning harbor landscape and wildlife are worth exploring. High among the rolling hills of the Peninsula is Larnach Castle, the grand home of an early politician. Construction of the castle began in 1871 and was completed 12 years later. From here, views out to sea and back towards the city emphasize the singular beauty of Dunedin and its jewel-like harbor.

SUGGESTED ACTIVITY - Taieri Gorge Railway Scenic Train

Experience the breathtaking Taieri Gorge on Dunedin's iconic scenic train journey! Travel through stunning Otago landscapes, marvel at the engineering feats of the historic Taieri Gorge Railway, and hear captivating stories of the region's past from our onboard commentary. See the majestic Wingatui Viaduct, the tallest wrought iron structure in Australasia, and explore hand-carved tunnels. Enjoy comfortable, all-weather travel with onboard refreshments and photo stops. Choose a return trip from Dunedin's historic Railway Station or opt for a one-way journey to Pukerangi. Escape the digital world and reconnect with nature on this unforgettable New Zealand rail experience.

Your accommodation: Motel on York

Motel on York is located in the heart of Dunedin city. The property offers superior accommodation only 300 metres away from cafes and restaurants.



Day 23



Dunedin to Te Anau (via Invercargill)

The drive to Te Anau takes you through classic Southland farming scenery. Head off-the-beaten-track today and follow the coastline instead of the inland route. Go through The Catlins area and be sure to take a detour to Kaka Point to view its majestic cliffs and pounding surf. If time permits, keep driving towards Nugget Point, iconic for its steep headland with a lighthouse perched atop. Continue through Invercargill to Riverton and Colac Bay, and then head north to Manapouri. From here you can embark on a day or overnight cruise to the remote Doubtful Sound, renowned for its natural beauty. Just a short way further will bring you to your lakeside destination of Te Anau, gateway to Fiordland National Park and Milford Sound.

SUGGESTED ACTIVITY - Te Anau Glowworm Caves with RealNZ

Begin your Te Anau Glowworm experience with a scenic cruise across Lake Te Anau on board the luxury catamaran, Luminosa, to the western side of the lake. On arrival, you'll enter the caves through Cavern House, where informative displays detail the history of this 12,000 year old underground network. You'll then explore by limestone pathway while your guide points out hidden whirlpools, sculpted rock formations, and a rushing underground waterfall. See a magical display of thousands of glowworms as you glide through the darkness in a small boat.

Your accommodation: Lakefront Lodge

Stylish self-contained motel units less than a minute walk from Te Anau Lakefront. Enjoy a close walk to shops, cafes and restaurants.



Day 24



Te Anau to Milford Sound, returning to Te Anau

The magnificent Milford Road leading to Milford Sound offers some of the most beautiful and iconic scenery in the country. Countless photo opportunities mean this drive should not be rushed. From crystal clear lakes and towering mountains to lush glacier-formed meadows, this area is abundant with picture-perfect scenes. Continue on through the Homer Tunnel, an engineering marvel at 1219 meters long. Arriving in the village of Milford, you will be greeted with an amazing view of Mitre Peak. A day cruise into the heart of the sound is not to be missed. You'll learn about how this magnificent area was formed and experience the wonder of the falls that line the Fjord before back-tracking the way you came.

SUGGESTED ACTIVITY - Milford Sound Lunch Cruise on the Fiordland Jewel with Fiordland Discovery

Embark on an unforgettable Milford Sound adventure aboard a boutique catamaran, the Fiordland Jewel. Designed for ultimate comfort and breathtaking views, our small group cruise offers cozy lounges, dining booths, and panoramic sea vistas from the main saloon or the outdoor dining area. Regardless of the weather, you'll be immersed in the stunning scenery and nature that surround you. Our knowledgeable crew will share fascinating stories and point out wildlife such as seals, penguins, and dolphins along the way. Enjoy a delicious lunch prepared by the onboard chef as you sail through the fiord. With ample outdoor space, you can fully experience the tranquillity and beauty of Milford Sound.

Milford Sound Cruise with Real NZ - Lunch Included

Get up close and personal with Milford Sound on a leisurely cruise of this spectacular fiord. From thundering waterfalls to sky-high mountains to lush rainforests, Milford has it all. Experience the spray of a waterfall as you cruise close to sheer rock faces. Informative, participative and relaxed, this is the perfect way to experience Milford Sound to the fullest.

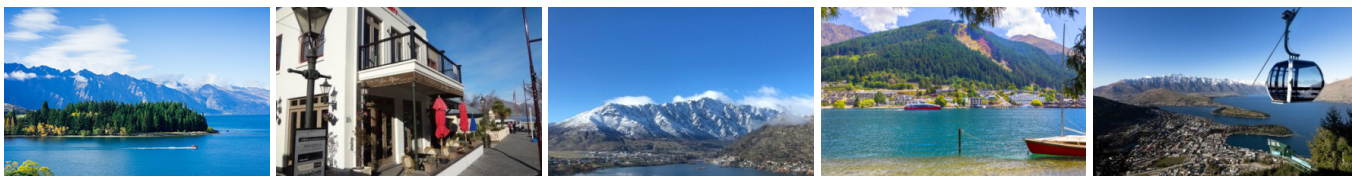
Your accommodation: Lakefront Lodge

Stylish self-contained motel units less than a minute walk from Te Anau Lakefront. Enjoy a close walk to shops, cafes and restaurants.

Meals included: Lunch



Day 25



Te Anau to Queenstown

Journey across expansive tussock lands en route to Queenstown. Pass through Mossburn, renowned as the deer capital of New Zealand, and continue through the picturesque Southland countryside. As the road begins to trace the edge of Lake Wakatipu, marvel at the breathtaking views from the Devil's Staircase. Finally, approach Queenstown, the adventure capital of New Zealand, with the Remarkables mountain range standing majestically in the backdrop.

Explore Queenstown

Well-known as New Zealand's 'adventure capital', Queenstown is home to a range of adventures, from the world's first and most famous bungy jumps to jet boat thrills, white-water rafting, and skydiving. However, Queenstown offers far more than a fast-paced, action-packed holiday. Settled on the shores of beautiful Lake Wakatipu beneath a soaring panorama of the Remarkables Mountain Range, this alpine town is surrounded by many historic, gastronomic, and scenic wonders. Take a stroll through the beautiful lakefront parks and gardens, browse through market stalls on weekends, dine in wonderful al-fresco restaurants, or ride on the 100-year-old historic Steamship - TSS Earnslaw to Walter Peak Station. Take the Queenstown Gondola up to Bob's Peak and soak up the panoramic views of the magnificent lake and mountain ranges. And after all of that, if you do want the adrenaline rush, Queenstown is known for taking your pick from the Shotover Jet, Canyon Swing, Zipline, Luge, or Heli-hike.

SUGGESTED ACTIVITY - Gondola and 3 Luge Rides with Skyline Queenstown

In the heart of Queenstown, located 450 metres above town in the Ben Lomond Scenic Reserve is the Skyline Complex. A gondola ride to the summit makes for awe-inspiring views of the city surround. Arrive at the complex and wander the outside viewing decks for a picture perfect outlook. Then onto the Luge! The 800 metre luge track offers an exhilarating journey through banked corners, tunnels and dippers.

SUGGESTED ACTIVITY - TSS Earnslaw Cruise and Walter Peak Gourmet BBQ Dinner

Enjoy a quintessential Kiwi experience, a delicious gourmet BBQ buffet meal, and a farm demonstration in a stunning lakeside setting. Take in the stunning views of Lake Wakatipu and its surroundings as you cruise across the lake to the historic Walter Peak high country farm aboard the TSS Earnslaw Steamship. Enjoy the ambiance of the heart of the stately homestead while your Colonel's Homestead Restaurant chef prepares a gourmet BBQ dinner. Your seasonal menu includes an extensive selection of local New Zealand produce, including succulent meats and a selection of delicious vegetables and salads. Complete your meal with your choice of delicious desserts, or New Zealand cheeses. After dinner, watch the farm dogs in action with a sheep-herding demonstration and say hello to the other farm animals. Finally, cruise home under the southern stars and enjoy the fresh night air as the lights of Queenstown draw ever closer.

Your accommodation: Blue Peaks Lodge

Blue Peaks Lodge offers well equipped self contained rooms with a fantastic location overlooking Queenstown and is just an easy five minutes walk to the Queenstown lakefront.



Day 26



Wilderness Jet Experience with Dart River Safaris

Journey deep into the heart of the world-renowned Mt Aspiring National Park, where myth, heritage, and fantasy come to life. As one of Queenstown's most exhilarating activities, the Wilderness Jet adventures on a spectacular journey deep into the heart of the world-renowned Mount Aspiring National Park.

Your accommodation: Blue Peaks Lodge

Blue Peaks Lodge offers well equipped self contained rooms with a fantastic location overlooking Queenstown and is just an easy five minutes walk to the Queenstown lakefront.



Day 27



Queenstown to Franz Josef Glacier via Wānaka

From Queenstown you'll cross the Crown Range, the highest sealed road in New Zealand to arrive in the Alpine town of Wānaka, gateway to Mt Aspiring National Park. Skirting the shores of both Lake Wanaka and Hawea, you will enter the small town of Makarora. Stop at Blue Pools for a 1-hour return walk through the native beech forest to a glacier-fed swimming hole. Continue on through the remote seaside settlement of Haast before heading up the wild West Coast highway you pass through ancient temperate rainforests while getting sneak peeks of the wild coast beaches occasionally. Paringa Salmon Farm is worth a stop to stretch your legs, feed the fish, and stop for lunch and refreshments. Keep heading North and be sure to enjoy the view of the ever-changing towering snowcapped Southern Alps Mountain Range. Fox Glacier welcomes you first, then comes your destination for the night Franz Josef township.

Your accommodation: Aspen Court Franz Josef

Aspen Court Franz Josef is set amongst native bush providing a very peaceful ambience. Internally the motel units are large, practical and modern with all containing quality furnishings and fittings.



Day 28



Franz Josef Glacier Helihiike with Franz Josef Glacier Guides

After a thrilling scenic flight, high above the rugged terrain, you will land on the glacier, ready to undertake a 2.15 hour guided glacier hike. Your friendly guide will lead you through some of the most pristine and awe-inspiring glacial scenery in the world. Your guide will choose your route carefully as you go and, with an eye for the most spectacular ice formations, you'll soon be making your way through an extraordinary landscape of towering peaks and glistening blue ice. It is important you read and understand the risks associated with this activity prior to travel. For more information please see [here](#).

Your accommodation: Aspen Court Franz Josef

Aspen Court Franz Josef is set amongst native bush providing a very peaceful ambience. Internally the motel units are large, practical and modern with all containing quality furnishings and fittings.



Day 29



Franz Josef to Greymouth Train Station

Head north along the mighty West Coast highway you pass through ancient temperate rainforests while getting sneak peeks of the wild coast beach occasionally. Whataroa is the next town where you can see one of the world's rarest birds, the Kōtuku - White Heron. The Kōtuku nest at the Waitangi Roto Nature Reserve, only accessible with a guided tour from October to March. The next town is Ross which is the site of an old gold mining settlement where the local information centre offers you the chance to pan for gold. Hokitika is a great place to explore craft and gift stores and head to the coast and take in the endless sea views. The Pounamu-Greenstone on offer in Hokitika is probably some of the best you will see in the country. Continue on to Greymouth, the largest town on the West Coast and the starting point for the next leg of your journey the TranzAlpine Scenic Train. Drop your rental car at the Greymouth Train Station depot located at the train station building before boarding your train to Christchurch.

TranzAlpine Scenic Train: Greymouth to Christchurch

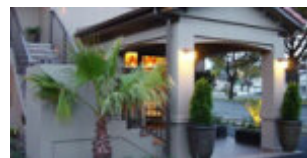
Considered one of the world's great train journeys, the TranzAlpine Scenic Train takes you from Greymouth to Christchurch. Travel across the South Island from the west to the east coast through Arthur's Pass National Park. From the comfort of your carriage see lush beech forest, deep river valleys and the spectacular peaks of the Southern Alps. Descend to the windswept Canterbury Plains before arriving in the city of Christchurch.

Shared Transfer from Christchurch Train Station to Christchurch CBD Accommodation with Christchurch Touring Company

On arrival at the Christchurch railway station, you will be met by a driver and transferred to your Christchurch accommodation.

Your accommodation: Terra Vive Luxury Suites and Apartments

Terra Vive Luxury Suites and Apartments offer luxury accommodation in the heart of Christchurch City. Situated within the beautiful tree-lined street of Bealey Avenue, Terra Vive is ideally located in close proximity to the shops, restaurants and cafes.



Day 30



Private Transfer from Christchurch Accommodation to Christchurch Airport with Christchurch Touring Company

A private transfer will collect you from your accommodation and transfer you to Christchurch Airport in time for your departing flight.

Farewell from Aotearoa-New Zealand

Bid farewell to New Zealand, taking with you unforgettable memories of its breathtaking landscapes and incredible adventures. In Maori, it is said mā te wā, which is not goodbye, it is see you soon!

Tour details

Departures:	Daily
Tour type:	Nationwide Self Drive
Starts:	Auckland
Finishes:	Christchurch
Tour length:	30
Accommodation:	Motels
Car/transport type:	

Included activities

Includes	Private airport transfers
Includes	Private train station transfers
Includes	TranzAlpine Train from Greymouth to Christchurch
Includes	Interislander ferry crossing
Includes	Cape Reinga Fly and Drive Tour
Includes	Rotorua Forest Canopy Tours
Includes	Te Puia Maori Arts & Crafts
Includes	Driving Creek Railway, Coromendal
Includes	Cathedral Cove Cruise
Includes	Hawkes Bay Wine Experience Half Day Tour
Includes	Zealandia Wildlife Sanctuary Night Tour, Wellington
Includes	Abel Tasman Seals and Beach walk
Includes	Whale Watch Kaikoura tour
Includes	Christchurch Gondola Ride
Includes	Glacier Explorers Tour, Mt Cook National Park
Includes	Wildlife cruise and Yellow eyed penguin colony, Dunedin
Includes	Dart River Wilderness Safari, Glenorchy
Includes	Real Journeys Milford Sound Cruise
Includes	Franz Josef Glacier Helihike

Accommodation summary

Day 1	Nesuto Stadium Hotel and Apartments
Day 2	Nesuto Stadium Hotel and Apartments
Day 3	Sea Spray Suites
Day 4	Sea Spray Suites
Day 5	Snells Beach Motel
Day 6	Aotearoa Lodge
Day 7	Aotearoa Lodge
Day 8	Silver Fern Suites & Spa
Day 9	Silver Fern Suites & Spa
Day 10	Bella Vista Napier
Day 11	Bella Vista Napier
Day 12	The Claremont, Martinborough
Day 13	Bella Vista Wellington
Day 14	Ocean View Chalets
Day 15	Ocean View Chalets
Day 16	The White Morph, Kaikōura

Day 17	The White Morph, Kaikōura
Day 18	Terra Vive Luxury Suites and Apartments
Day 19	Terra Vive Luxury Suites and Apartments
Day 20	Mt Cook Motel
Day 21	Motel on York
Day 22	Motel on York
Day 23	Lakefront Lodge
Day 24	Lakefront Lodge
Day 25	Blue Peaks Lodge
Day 26	Blue Peaks Lodge
Day 27	Aspen Court Franz Josef
Day 28	Aspen Court Franz Josef
Day 29	Terra Vive Luxury Suites and Apartments