

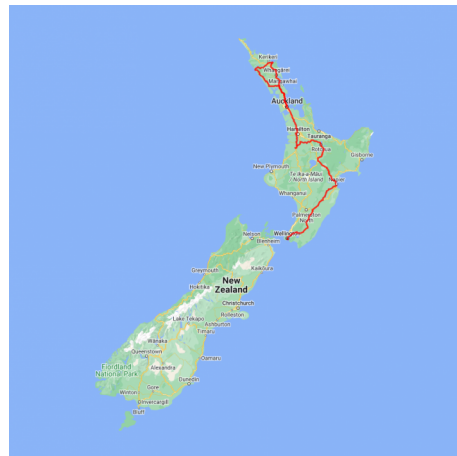


## The Essential North Island Tour

Take 14 days to explore the North Island. This itinerary covers the premier locations at a pace you will enjoy. Time to relax with the 'must see' activities taken care of. Stay in a superb selection of 5 star hotels, luxury and boutique lodges.

Starts in: Auckland  
 Finishes in: Wellington  
 Length: 14days / 13nights  
 Accommodation: Boutique Lodges & Hotels  
 Can be customised: Yes

This itinerary can be customised to suit you perfectly. We can add more days, remove days, change accommodations, mix it up, add activities to suit your interests or simply design and create something from scratch. Call us today to get your custom New Zealand itinerary underway.



### Inclusions:

Includes: Late model rental cars

Includes: Unlimited kms

Included activity: Private Transfer Auckland Airport to your Auckland Accommodation with Tourcorp

Included activity: The Visitor Promise - Cultural Learning Course

Included activity: Lord Of The Rings Half Day Private Tour with Capital Personalised Tour

Included activity: Matakōhe Kauri Museum

Included activity: Hole in the Rock Cruise with Fullers GreatSights

Included activity: Te Pā Tū Evening Māori Cultural Experience - Dinner Included

Includes: Fully inclusive rental car insurance (excess may apply)

Includes: Afterhours emergency support while touring

Included activity: Electronic Travel Guide and In-Country Support App

Included activity: Hawkes Bay Half Day Wine Tour with Grape Escape

Included activity: Coast and Rainforest Full Day Tour with Bush and Beach - Lunch Included

Included activity: Twilight Waipoua Encounter

Included activity: Private Footwhistle Glowworm Cave Tour with CaveWorld

: Meals included: 13 breakfasts, 1 lunch, 2 dinners

## Day 1



### Private Transfer Auckland Airport to your Auckland Accommodation with Tourcorp

You will be met at the Auckland airport by the driver and transferred to your Auckland accommodation.

### Welcome to Auckland

Welcome to Auckland, known in Māori as Tāmaki Makaurau. Auckland is New Zealand's vibrant "City of Sails," and the country's largest metropolitan area. Nestled between the Pacific Ocean and the Tasman Sea. Surrounded by native bush, lush rainforests, and pristine beaches, Auckland is a haven for both adventurers and urban explorers. Wander through world-class museums and galleries in the city centre or enjoy a peaceful retreat at the Auckland Gardens, where stunning landscapes showcase New Zealand's diverse flora. Stroll along the lively waterfront to savour fresh seafood and international cuisine at Viaduct restaurants. For an unforgettable perspective, ascend the iconic SkyTower, New Zealand's tallest structure, and take in panoramic views of the city and its picturesque islands.

### SUGGESTED ACTIVITY - All Blacks Experience

See what it takes to make, shape and be an All Black. Experience first-hand the excitement and emotion of game day. Discover the stories behind some of world rugby's most famous players, moments, and matches.

This guided experience introduces you to the game of rugby including state-of-the-art displays combining sound, images, interactive technology, and hands-on activities. Discover New Zealand's deep passion for our national sport, experience the full force of the All Blacks haka, and tackle interactive zones where you can try out your kicking, catching, line-out, and accuracy skills against legendary All Blacks.

### SUGGESTED ACTIVITY - Wētā Workshop Unleashed

A jaw-dropping, senses-shattering, awe-inspiring adventure into the heart of movie magic! Get hands-on and immerse yourself in an extraordinary world of practical effects, props and larger-than-life sets. On this award-winning tour, you can explore three movie projects imagined by the Weta crew and uncover how they bring big screen concepts to life. Discover a mind-blowing world of robots, monsters, dinosaurs and more - step right into the action to see, play and experience movie-making up close.

### Your accommodation: Fable Auckland

Located right on Queen Street the Fable Auckland is boutique and stylish property with an ideal location to enjoy and explore the vibrant heart of the 'City of Sails'.



## Day 2



### Coast and Rainforest Full Day Tour with Bush and Beach - Lunch Included

Your full-day excursion takes you first to the Arataki Visitor Centre, the gateway to the Waitakere Ranges and a short drive from Auckland Central. Enjoy panoramic views extending from the Tasman Sea to the Pacific Ocean as you absorb the area's history and admire the magnificent traditional Māori carvings. Walk the regenerating rainforest where your experienced guide will detail local flora and fauna. Take in the giant tree ferns, and bubbling streams before venturing onto a wild west coast beach. Enjoy a picnic lunch before your eco-tour ends in an area of untamed original rainforest. Here, mature 200-300-year-old kauri trees have developed separately from the rest of the world for millions of years and this part of the rainforest is particularly rich in bird life due to a successful programme to eradicate pests.



## Your accommodation: Fable Auckland

Located right on Queen Street the Fable Auckland is boutique and stylish property with an ideal location to enjoy and explore the vibrant heart of the 'City of Sails'.

Meals included: Breakfast, Lunch



---

## Day 3



### Collect Rental Car

This tour's from price includes an intermediate-sized vehicle, setting you up for comfortable travels. Yet, we understand every adventure is unique! Feel free to select the perfect wheels from our incredible collection of rental cars, spanning from economy hatchbacks to premium SUVs.

---

### Auckland to Waipoua Forest

Today's drive will cover about 230kms up the New Zealand State Highway 1, leaving you plenty of opportunities to stop off and take in the sights. Departing the Harbour city of Auckland, you may wish to make a short detour to the charming town of Matakana. Renowned for its excellent wineries and unique food stores, Matakana is the perfect place to stop for a bite to eat or a visit to one of the many cellar doors. If you're visiting Matakana on a Saturday, the Village farmers' market offers award winning coffee, mouth-watering brunch dishes and live local music. Back on the road, a visit to the Kauri Museum at Matakoho is worth the stop, displaying the story of their hardships and pioneering spirit. At Kauri Museum, you'll discover the remarkable impact this tree had on the region and the wider world. Further north, Lake Kaiwi is a great place to stop and stretch your legs, with a beautiful walk around the lake. Or perhaps you may wish to take a dip into this clear water lake. Continue back on the road to your final destination, Waipoua Forest. Home of Tāne Mahuta, the country's largest kauri tree, which is approximately 2,000 years old and still growing.

---

### Matakoho Kauri Museum

The Kauri Museum is located approximately 90 minutes drive north of Auckland, in the rural backdrop of Matakoho. Offering insight into the region's pioneering history, It charts the rise and fall of the great Kauri forests with stunning displays and detailed exhibitions including: The largest collection of Kauri Gum in the world, a fully furnished 1900's era Kauri house, the largest collection of Kauri furniture in the world, a huge 22 metre long Kauri slab and a magnificent collection of original photographs and pioneering memorabilia.

---

### Twilight Waipoua Encounter

Experience the Waipoua Forest at night on this spectacular 4 hour tour. Learn about the rich birdlife and fauna that inhabit the forest, including the carnivorous kauri snail. You'll also get to experience the deep spiritual respect the Maori people have for this place. Your Maori guide will brief you on the protocols for your visit and you once formal greetings have been made you will be allowed to meet the giant Tane Mahuta, or Lord of the Forest - the oldest Kauri tree in the world.

---

### Your accommodation: Waipoua Lodge

Waipoua Lodge is nestled on a ridge overlooking the mighty Waipoua Forest. Experience authentic New Zealand luxury hospitality in a breathtaking ancient and natural environment. Please contact the property a day or two before your arrival to discuss menu preferences.

Meals included: Breakfast



---

## Day 4



## Waipoua to Russell, Bay of Islands

From Waipoua Forest continue north to the Hokianga Harbour and the historic townships of Omapere and Opononi. Take a moment to breathe in the wild West Coast air at the harbour heads before making a worthwhile detour to Rawene, New Zealand's third-oldest European settlement, to see its charming wooden buildings perched over the water. As you cross the island toward the subtropical Bay of Islands, you'll arrive in Kerikeri, a vibrant hub of artisan crafts and history. Finally, reach Ōpua to board the vehicle ferry (shuttles every 10 minutes; payable onboard via card) for the short hop over to the tranquil, historic streets of Russell.

---

### SUGGESTED ACTIVITY - Ngawha Springs

Bathe in the healing waters at Ngawha Springs and let the ancient energy revitalise your senses while the minerals from deep in the earth permeate your body. The mineral-rich hot waters of Ngawha Springs bubble up from deep within the Earth. Nestled in the heart of Te Tai Tokerau, Northland, the springs have a long history of being a restorative and healing place to visit. The people of Ngapuhi have attended the natural springs to replenish wairua (spirit), alleviate the sensation of pain, and repair common ailments.&nbsp;

---

### Your accommodation: Arcadia Lodge, Russell

Arcadia Lodge is a Russell landmark, a turn of the century home and luxury bed and breakfast overlooking Russell's tranquil Matauwhi Bay.

Meals included: Breakfast



---

## Day 5



### Hole in the Rock Cruise with Fullers GreatSights

Board your cruise and take in the stunning views as you glide out through the islands and along the Rakaumangamanga Peninsula to Cape Brett, where a historic lighthouse keeps watch over and Piercy Island/Motukōkako, or as it is popularly known as the Hole in the Rock. According to Māori legend, local warriors used to paddle through the Hole in the Rock in their canoes before departing for battle. Drops of water from the cave roof above were a good omen. If conditions permit, your skipper will expertly guide the ship through the narrow space. Keep an eye out for common and bottlenose dolphins, whales, and other marine life during your cruise, and have your camera ready as you get up close to the action. Stop off at Otehei Bay on Urupukapuka Island where you have time to relax, take a walk, have a swim, or enjoy a bite to eat and drink from the on-site fully licensed cafe. The purpose-built catamaran is licensed by DOC (the Department of Conservation) for dolphin viewing and the crew has years of experience locating dolphins in these waters.&nbsp;

---

### Explore Bay of Islands

Commonly known as the 'winterless north', New Zealand's Bay of Islands is made up of over 140 subtropical atolls. Renowned for its untouched beaches, abundant marine life, and idyllic climate, this tropical paradise ticks all the boxes. Spend some time on a remote stretch of beach, or see the dolphins on an ocean safari. If diving is your thing, take the morning to descend the Rainbow Warrior - The Greenpeace flagship sunk by French saboteurs in 1985. Wander around Russell, a whaling port founded in 1843. Learn about our culture in historic Waitangi, the site where The Treaty of Waitangi was signed in 1840 between the Māori and Europeans. Alternatively, you may like to take a day tour to Cape Reinga, the very top of the North Island.

---

### SUGGESTED ACTIVITY - Waitangi Treaty Grounds Guided Tour and Cultural Performance

Waitangi is one of New Zealand's most historic sites where the Treaty of Waitangi was signed in 1840 between the Māori and the British Government. This two day pass allows you access to the Treaty of Waitangi Grounds and includes admission to the Te Kōngahu Museum and Te Rau Aroha Museum and a Maori Cultural performance. During your guided tour, learn about the history of the treaty and discover the stories and events that shaped New Zealand. The cultural performance inside the carved meeting house includes waiata (singing), poi and the haka - a war dance Aotearoa-New Zealand is well known for.

---

### Your accommodation: Arcadia Lodge, Russell

Arcadia Lodge is a Russell landmark, a turn of the century home and luxury bed and breakfast overlooking Russell's tranquil Matauwhi Bay.

Meals included: Breakfast





## Day 6



### Paihia, Bay of Islands to Auckland

Today leave the Bay of Islands behind as you head south towards Auckland, City of Sails. You'll go through Kawakawa, famous for its unique Hundertwasser toilets, before passing the port-side town of Whangarei. Continue on through Warkworth and take a side trip to Matakana, renowned for its beaches and boutique vineyards. As you near the outskirts of Auckland, stop for a breather in Puhoi, New Zealand's only Bohemian settlement, before passing through the North Shore and into the heart of Auckland City.

### Your accommodation: Fable Auckland

Located right on Queen Street the Fable Auckland is boutique and stylish property with an ideal location to enjoy and explore the vibrant heart of the 'City of Sails'.

Meals included: Breakfast



## Day 7



### Auckland to Waitomo

The drive south from Auckland takes you into the rolling farmland and rich dairy pastures of the Waikato, before arriving in the limestone hills of the Waitomo countryside, which is home to a huge underground network of caves.

### Private Footwhistle Glowworm Cave Tour with CaveWorld

Your tour begins as you are picked at the Waitomo iSite and enjoy a scenic shuttle to Caveworld's family owned cave, while your guide provides commentary bringing the rich history of Waitomo to life. Here you will take a short walk through the breathtaking New Zealand bush, keeping an eye out for the native birdlife. Heading down to the entrance of the cave you will discover the beauty of the glowworms, learn about the formation of Footwhistle Cave - known to local Maori as Te Anaroa Cave. You are encouraged to bring along your cameras a tripods to freeze the beautiful twinkling lights in time, with dim solar-powered lights through the cave that allow you to appreciate the magnificent displays and get the perfect shot. Complete your intimate tour with a Kawakawa tea as you relax in a ponga hut nestled into the native surrounds.

### Your accommodation: Abseil Inn

Architecturally designed, the Abseil Inn is situated on a ridge overlooking both the Waitomo Caves Village and the beautiful Waitomo Valley. Sited to maximize both views and rural ambience it offers an authentic slice of rural NZ

Meals included: Breakfast, Dinner



## Day 8



### Waitomo to Rotorua

Today cross the lush farmland of the Waikato as you make your way inland to Rotorua. Pass through several small farming towns such as Otorohanga and Putaruru, before the region's geothermal activity signals your arrival into the city of Rotorua.

## Your accommodation: On the Point

On the Point is a beautiful lodge accommodation in a stunning location and offering panoramic views. It also offers gourmet New Zealand food and wine, as well as a range of on site activities from pampering massage, fly fishing from the private beach, water sports, tennis, gym and boating and is only 10 minutes from the heart of Rotorua.

Meals included: Breakfast



---

## Day 9



### Explore Rotorua

Peppered with natural hot springs, boiling mud pools and steaming geysers, Rotorua sits within one of the world's most active volcanic regions. Geothermal landmarks aside, this city of sulphur has a rich indigenous history. Home to several prominent Māori tribes, a visit to one of the Māori experiences should be high on your agenda, learn about the special meaning of pounamu-Greenstone with Mountain Jade, explore the geysers and arts of Te Puia or immerse in an evening with Te Pā Tū. An excursion to one of the area's wellness spas is also a must! Try the Polynesian Spa for an invigorating soak in its natural mineral hot springs, Wai Ariki offers an indulging and unwinding restorative journey or pay a quick visit to Secret Spot for a soak and a delicious smash burger! If it is a thrill you are looking for, spike your adrenaline at Rotorua Canopy Tours, soaring above the ancient native forest below. Alternatively, head up the Skyline Rotorua Gondola for soaring lake views, and ride the luge at night for an extra thrill. Make the most of your time in Rotorua with an excursion through the Wai-O-Tapu Thermal Wonderland, one of the area's most colourful volcanic attractions. Whatever you are after, Rotorua is almost certain to have it!

---

### SUGGESTED ACTIVITY - National Kiwi Hatchery Experience

The National Kiwi Hatchery Experience is a special opportunity to gain insight into and view this highly regarded conservation centre. Developed with the visitor experience in mind, the hatchery boasts special viewing opportunities and is hosted by kiwi expert guides who ensure guests leave fully informed and all questions answered. Learn all about New Zealand's intriguing national icon and the efforts of the kiwi husbandry team, see and discover what it takes to hatch and rare chicks, and if you're lucky see baby chicks in person!

---

### SUGGESTED ACTIVITY - Mount Tarawera & Orakei Korako Thermal Explorer by Floatplane with Volcanic Air

From above Mount Tarawera's impressive views include vast volcanic rifts, distant national parks, and our treasured lakes. Flying south on a floatplane, you will gain an appreciation of what local Maori refer to as the 'Sisters of Fire'. Here, volcanic activity has pierced the earth's surface across the fault line forming the reserves of Waimangu and Wai-O-Tapu which, when viewed from above, display a spectacular palette of nature's most vibrant colors. Landing at Orakei Korako, 'the Hidden Valley', is an amazing opportunity to experience hot springs, gushing geysers, and the natural beauty of this geothermal wonderland.

---

### Te Pā Tū Evening Māori Cultural Experience - Dinner Included

New Zealand's Most Awarded Cultural Attraction, presenting Te Pā Tū. Feast on song, drama, tradition, and divine seasonal kai (cuisine) within the forest Pā (village) blanketed by towering Tawa trees, blazing bonfires, and a forest-formed amphitheatre. Te Pā Tū shares Māori history, traditions, and cultural aspirations across 4-hours of celebration and feasting. These events change with each season of the Maramataka, the Māori lunar calendar.

---

### SUGGESTED ACTIVITY - Wai-O-Tapu Thermal Wonderland

Wai-O-Tapu Thermal Wonderland is a spectacular showcase of New Zealand's colourful and unique geothermal elements sculpted by thousands of years of volcanic activity. You will be introduced to a diversely different natural landscape, extending over 18-sq. km. Enjoy viewing the volcanic features as you walk at your own pace along well-defined tracks. Relax in the first-class Visitor Centre, home to the Gift Shop and Café facilities. Visit the Mud Pool, the largest in New Zealand, it was originally the site of a large mud volcano which was destroyed through erosion in the 1920s. See the history and beauty of the Lady Knox Geyser at 10:15 am every day where a daily eruption happens of up to 20 metres.

---

## Your accommodation: On the Point

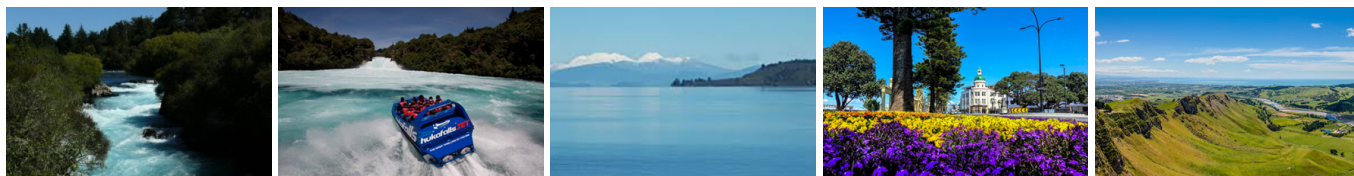
On the Point is a beautiful lodge accommodation in a stunning location and offering panoramic views. It also offers gourmet New Zealand food and wine, as well as a range of on site activities from pampering massage, fly fishing from the private beach, water sports, tennis, gym and boating and is only 10 minutes from the heart of Rotorua.

Meals included: Breakfast, Dinner





## Day 10



### Rotorua to Napier via Taupō

This drive will take you through the thermal region just south of Rotorua. Home to a plethora of unique geothermal attractions including boiling mud pits, natural hot springs and steaming geysers, this area is a must do before you move on to Napier. Notable attractions are Wai-O-Tapu, Waimangu and Craters of the Moon. Continue on to Taupō and marvel at the lake, a giant crater formed following a volcanic eruption in the year 180 CE. As you approach the town, be sure to stop at Huka Falls to view the spectacular sight of hundreds of cubic metres of water spilling every second down the narrow 11 metre drop. For an extra thrill take a jet-boat ride at the base of the falls. Leaving Taupō, follow the road as it climbs the rugged Ahimanawa Range before descending back down the Pacific Coast to art deco coastal township of Napier.

### Walking tracks in and around Hawkes Bay

Hawke's Bay offers a variety of scenic walks, from coastal paths to forest trails, perfect for exploring the region's natural beauty. Whether you're looking for a short stroll or a more challenging hike, there's something for everyone. Be sure to check with the Department of Conservation for current conditions before heading out.

### SUGGESTED ACTIVITY - Triple Chocolate Dipper Tour with the Silky Oak Chocolate Company

A true chocolate indulgence combining chocolate tasting at Silky Oak Chocolate factory shop, entry into the Chocolate "Thru' the Ages" Museum, a Chocolate drink (or tea/coffee), chocolate muffin/ slice, served with liquid chocolate and cream at their Café. You'll be presented with a bonus take-home gift - chocolate of course! This is chocolate overload for serious chocoholics!

### Your accommodation: Art Deco Masonic Hotel

The Art Deco Masonic Hotel occupies a significant historic building on Napier's waterfront and has been richly refurbished in keeping with the Art Deco architecture. With its central location and decadent décor, this is the best place to experience what Napier is famous for.

Meals included: Breakfast



## Day 11



### Explore Hawkes Bay

Discover Hawke's Bay, known in Māori as Te Matau-a-Māui or the fish hook of Māui. This is a region renowned for its Mediterranean charm, iconic Art Deco architecture, and award-winning wineries. Explore Mission Estate, the birthplace of New Zealand wine, or tour vineyards for a deeper dive into its winemaking legacy. Fans of the 1930s can enjoy a Vintage Car Tour, showcasing Napier's architectural gems. Outdoor enthusiasts can cycle over 200km of scenic trails or unwind at pristine beaches like Ocean and Waimarama. Indulge your taste buds with local delights, from honey and chocolate to fresh orchard produce. The Hawke's Bay is also home to an abundance of wildlife, head out on a Gannet Safari or educate yourself at the National Aquarium of New Zealand.

### SUGGESTED ACTIVITY - Gannet Safaris

Drive along the scenic coast from Napier to Te Awanga and join Gannet Safaris Overland and the world's largest, most accessible gannet colony at Cape Kidnappers. Gannet Safaris has been guiding visitors over Cape Kidnappers for over 35 years and their safaris are the only way to be driven right to within a few feet of these remarkable birds. You will travel in comfort in air-conditioned 4 x 4 wheeled vehicles, through Cape Kidnappers Station - traversing riverbeds, broad rolling pastures, stands of native bush, steep gullies and breath-taking inclines. There is a stop on the way at a spectacular cliff top with panoramic views of Hawke Bay right across to Mahia peninsular. The 36km, three hour trip includes a commentary by your tour guide/driver on the farming operation on Cape Kidnappers Station and an introduction to the gannets. On arrival at the gannets you can stretch your legs and take in the scenery from your position at the brink of the cliff's edge, 100 metres above the ocean!

## Hawkes Bay Half Day Wine Tour with Grape Escape

This wine tasting tour is designed for casual imbibers and wine aficionados. Meet like-minded people and share an appreciation of Hawke's Bay's fantastic wines. Taste great wines made with passion and learn of the area's unique growing conditions. Take home outstanding wines and wonderful memories. Join a fun-filled wine tasting afternoon in the sun driving through absolutely stunning scenery. Meet like-minded people and share an appreciation of this region's fantastic wine. Visit four to five wineries and enjoy a cheese platter on the grounds of the Ngatarawa Vineyard beside the lily pond.

### Your accommodation: Art Deco Masonic Hotel

The Art Deco Masonic Hotel occupies a significant historic building on Napier's waterfront and has been richly refurbished in keeping with the Art Deco architecture. With its central location and decadent décor, this is the best place to experience what Napier is famous for.

Meals included: Breakfast



## Day 12



### Napier to Wellington City via Masterton

The rolling countryside of the Hawke's Bay leads you into some of New Zealand's richest farmland, located around the Manawatu region. Passing along the Manawatu Gorge the Wairarapa welcomes you. Masterton is home to the golden shears sheep shearing competition while just further south Greytown boasts the largest concentration of historic wooden buildings in the country. Nearby Martinborough is home to dozens of boutique wineries. The route takes you over the Remutaka Range and along the magnificent natural harbour that the capital city of Wellington sits upon.

### Your accommodation: Bolton Hotel Wellington

The Bolton Hotel offers contemporary apartment-style accommodation in the heart of Wellington. Just steps from the Parliament buildings and central business district, Bolton Hotel is conveniently close to the best of the city's shops, cafes and restaurants and is within walking distance of Wellington's vibrant waterfront.

Meals included: Breakfast



## Day 13



### Wellington

Wellington, known in Māori as Te Whanganui-a-Tara, is home to New Zealand's centre of government. Often referred to as 'mini Melbourne', this windy city is a melting pot of art, culture, food, and fashion. Quirky laneway bars, underground art shows, and hipster eateries make up its inner-city vibe, while a host of sandy beaches outside the urban bustle bring a cheerful holiday feel. Head to Te Papa Museum for a history lesson and a ticket to one of its many international exhibitions or jump aboard the Wellington Cable Car - the only running funicular railway in the country. For those with an eye for boutique, fashion wander through Cuba St to sample some of the city's best vintage stores. Break for coffee at a hipster cafe and be sure to snap a pic outside the 'Beehive', New Zealand's parliamentary debate chamber. Go behind the scenes at Weta Workshop Experience, the Oscar Award Winning design studio behind Lord Of The Rings, The Hobbit, and Avatar. If you're a foodie at heart, a two-hour round trip to Martinborough is a must-do. Take your time as you wind through spectacular wine country. For an educational day out, learn about New Zealand's native species at Zealandia, the world's first fully-fenced eco-sanctuary and home to over 40 types of endangered and native birds.



## Lord Of The Rings Half Day Private Tour with Capital Personalised Tour

Prepare for an unforgettable LOTR adventure. Leaving Wellington, you will first head for the hills, admiring views from Mt Victoria before visiting Hobbit's Hideaway in the 'Outer Shire'. Next, immerse yourself at the Weta Cave in Miramar. Tour the museum, shop, and capture photos with iconic movie props. Experience the fascinating 'Weta Workshop Experience', going behind-the-scenes to see props and weaponry, with artists describing their creations. After a magical cinematic journey, you will return to Wellington.

---

## SUGGESTED ACTIVITY - Zealandia By Night Wildlife Sanctuary Tour

Taking a night tour of Zealandia wildlife eco-sanctuary is an unforgettable experience and one that comes highly recommended. A conservation success and safe haven for some of New Zealand's rarest native animals, Zealandia is home to many remarkable species of birds, reptiles and insects living wild within a beautiful 225 hectare (one square mile) valley, just 10 minutes from the central city.

---

## Your accommodation: Bolton Hotel Wellington

The Bolton Hotel offers contemporary apartment-style accommodation in the heart of Wellington. Just steps from the Parliament buildings and central business district, Bolton Hotel is conveniently close to the best of the city's shops, cafes and restaurants and is within walking distance of Wellington's vibrant waterfront.

Meals included:            Breakfast



---

## Day 14



## Depart Wellington today

Choose to explore more of Wellington's sights before dropping your rental car at the airport depot and continuing your onward journey.

## Tour details

Departures:	Daily
Tour type:	North Island Self Drive
Starts:	Auckland
Finishes:	Wellington
Tour length:	14
Accommodation:	Boutique Lodges & Hotels
Car/transport type:	

---

## Accommodation summary

Day 1	Fable Auckland
Day 2	Fable Auckland
Day 3	Waipoua Lodge
Day 4	Arcadia Lodge, Russell
Day 5	Arcadia Lodge, Russell
Day 6	Fable Auckland
Day 7	Abseil Inn
Day 8	On the Point
Day 9	On the Point
Day 10	Art Deco Masonic Hotel
Day 11	Art Deco Masonic Hotel
Day 12	Bolton Hotel Wellington
Day 13	Bolton Hotel Wellington