

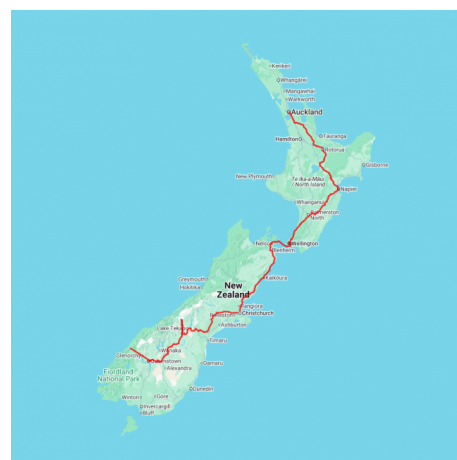


## Essential Luxury New Zealand

Begin your journey in Auckland with a gourmet dinner atop the iconic Sky Tower, enjoying 360-degree city views. Travel through rolling farmland to Rotorua, the cultural heart of New Zealand. Relax at the luxurious Wai Ariki Spa, soaking in restorative thermal waters. Take a scenic helicopter flight and land on Mount Tarawera for an unforgettable volcanic experience. Visit the National Kiwi Hatchery to meet New Zealand's cherished kiwi bird, then savour an authentic hāngī buffet dinner at Te Puia. Continue to Hawke's Bay, sampling world-class wines before driving the scenic Kapiti Coast to Wellington. Cross the Cook Strait on one of the world's most picturesque ferry journeys, arriving at the South Island. Indulge in a Seafood Odyssey Cruise through Queen Charlotte Sound's serene waters. In Christchurch, enjoy a unique tram dinner as you take in the garden city's charm. Head to the Southern Alps and wake to the majestic view of Aoraki - Mt Cook, New Zealand's tallest peak. Take a scenic flight over pristine glaciers and experience unrivalled stargazing under some of the clearest skies on Earth. Conclude in Queenstown, relaxing with lake views, savouring Gibbston Valley wines, and flying to magnificent Milford Sound, a once-in-a-lifetime luxury experience.

Starts in: Auckland  
 Finishes in: Queenstown  
 Length: 15days / 14nights  
 Accommodation: Luxury Lodges  
 Can be customised: Yes

This itinerary can be customised to suit you perfectly. We can add more days, remove days, change accommodations, mix it up, add activities to suit your interests or simply design and create something from scratch. Call us today to get your custom New Zealand itinerary underway.



### Inclusions:

Includes: Late model rental cars

Includes: Unlimited kms

Included activity: The Visitor Promise - Cultural Learning Course

Included activity: Private Transfer Auckland Airport to your Auckland Accommodation with Tourcorp

Included activity: The Panorama Room 3-course Dinner with The Hermitage Hotel  
 Included activity: Glacier Highlights Helicopter Flight

Included activity: Gondola and 3 Luge Rides with Skyline Queenstown

Included activity: Restorative Journey with Wai Ariki Hot Springs and Spa

Included activity: Behind The Scenes Exclusive Tour with National Kiwi Hatchery

plus much more...

Includes: Fully inclusive rental car insurance (excess may apply)

Includes: Afterhours emergency support while touring

Included activity: Dinner at the Sky Tower Orbit Restaurant

Included activity: Electronic Travel Guide and In-Country Support App

Included activity: Big Sky Stargazing

Included activity: Half Day Gibbston Wine Tour with Black NZ

Included activity: Fiordland's Finest Combo FLY - CRUISE - HELI with The Helicopter Line

Included activity: Mount Tarawera & Orakei Korako Thermal Explorer with Volcanic Air

Included activity: Te Pō Indigenous Evening Experience at Te Puia

## Day 1



### Private Transfer Auckland Airport to your Auckland Accommodation with Tourcorp

You will be met at the Auckland airport by the driver and transferred to your Auckland accommodation.

### Welcome to Auckland

Kia ora! Welcome to Auckland, known in Māori as Tāmaki Makaurau. Auckland is New Zealand's vibrant "City of Sails," and the country's largest metropolitan area. Nestled between the Pacific Ocean and the Tasman Sea, it offers something for everyone. Surrounded by native bush, lush rainforests, and pristine beaches, Auckland is a haven for both adventurers and urban explorers. Wander through world-class museums and galleries in the city centre or enjoy a peaceful retreat at the Auckland Gardens, where stunning landscapes showcase New Zealand's diverse flora. Stroll along the lively waterfront to savour fresh seafood and international cuisine at the Viaduct restaurants. For an unforgettable perspective, ascend the iconic SkyTower, New Zealand's tallest structure, and take in panoramic views of the city and its picturesque islands.

### Dinner at the Sky Tower Orbit Restaurant

Soaring high above Auckland you'll discover Orbit, a truly iconic New Zealand brasserie offering diners sensational views - and food to match. Situated at the top of Auckland's Sky Tower, the dining room rotates once every hour, providing a truly unique experience with amazing 360-degree panoramas of the city, the Hauraki Gulf and beyond. Orbit offers a modern dining experience in a relaxed, open atmosphere with a delicious kiwi-inspired a la carte menu that features the best local and seasonal produce. As New Zealand's only rotating restaurant offering 360-degree views, it's an unforgettable experience that never ceases to delight.

### Your accommodation: The Hotel Britomart Auckland

Soulful, smart and contemporary, The Hotel Britomart welcomes guests to Britomart, the vibrant centre of downtown waterfront Auckland. Still and calm, the rooms and suites at The Hotel Britomart pair simple elegance with the luxury of tactile materials. The Hotel Britomart is at the centre of a dynamic nine-block precinct of plant-lined streets, historic warehouses and the city's best shopping and eating.

Meals included: Dinner



## Day 2



### Collect Rental Car

This tour's from price includes an intermediate-sized vehicle, setting you up for comfortable travels. Yet, we understand every adventure is unique! Feel free to select the perfect wheels from our incredible collection of rental cars, spanning from economy hatchbacks to premium SUVs.

### Auckland to Rotorua

The drive south from Auckland takes you past the the Bombay Hills which mark the outer boundary of greater Auckland area and it's here you turn inland to central Waikato. You'll soon go through the town of Matamata where you can visit the fully intact Hobbiton film set used in the shooting of the Lord of The Rings and Hobbit trilogies. Continuing on, you'll pass several small farming communities before telltale signs of steam and other geothermal activity signal your arrival into Rotorua.

## Rotorua

Discover the geothermal, adventure, and cultural wonderland of Rotorua. As you explore, you may see steam rising from cracks in the road, bubbling and hissing water in pools along the lake's edge, and the unmistakable smell of Sulfur. Rotorua is rich in Māori culture and history, with many Māori inhabitants recognising the great potential of the volcanic land. For an outdoor adventure, head to The Redwoods and experience the rainforest treetops from high up. There are a few accessible trails for disabled hikers and great biking trails as well. If you're lucky, you might spot some of New Zealand's native birds, such as the Piwakawaka (Fantail) and the Tūī. Alternatively, enjoy the Lake Tikitapu Blue Lake Walk or explore Kuirau Park, where you'll find bubbling mud pools and steaming lakes. Don't miss the private thermal reserves such as Te Puia and Wai-O-Tapu, where you can walk among bubbling mud pools, spouting geysers, and Sulfur ponds. Just a few minutes from the town centre, the Agrodome and National Kiwi Hatchery offer an insight into nature. Rotorua's rich Māori culture is a must-see. Spend an evening with Te Pā Tū, complete with a traditional-style dinner or stroll along the lake edge to reach one of the country's oldest Māori villages at Ohinemutu. When hunger strikes, visit Eat Street in Rotorua CBD, a vibrant street lined with delicious eateries and restaurants to satisfy any craving. No visit to Rotorua would be complete without experiencing Rotorua's original tourist attraction - a relaxing spa treatment. This town boasts an array of wellness experiences to unwind in. Whether you are seeking adventure, culture, or relaxation, Rotorua offers an unforgettable experience.

---

### Solitaire Lodge

Nestled on the shores of Lake Tarawera, Solitaire Lodge offers guests the ideal blend of indulgence and adventure from a picture-perfect setting. Luxurious and elegantly appointed with floor-to-ceiling windows and stunning panoramic views across the lake, guests can choose to relax in front of an open fire with a book from the library, enjoy the bar facilities or take a stroll in the expansive herb garden. Nearby is the Lodge's private jetty with complimentary use of the lodge's kayaks, motorised dinghies and trout fishing gear. Each of the suites is styled for comfort and features panoramic views of the lake and volcano. Bringing the outdoors in, you are invited to unwind and soak up the peace and quiet of this tranquil setting.

---

### Restorative Journey Package with Wai Ariki Hot Springs and Spa

Indulge your senses in a Restorative Journey (Wai Whakaora), a thoughtfully designed therapeutic experience inspired by the practices and culture of Ngāti Whakaue. Embrace the healing power of the natural environment as your senses awaken through a series of hot and cold therapies. Your journey begins beneath a cascading waterfall, cleansing your body and mind. Transition to Te Ahi Tupua, where a sequence of hot and cold immersions invigorates and rejuvenates. Relax in the soothing waters of the Geothermal Pool, sourced from the renowned Rachel Spring. Follow this with a refreshing cold plunge, easing muscle tension and reducing inflammation. Conclude your experience in the Kohu Wai Arik steam room, where heated stones create a serene space for reflection and relaxation, leaving you revitalized and restored.

---

### Your accommodation: Solitaire Lodge

Solitaire Lodge Rotorua, one of New Zealand's premier luxury lodges, enjoys breathtaking views over Lake Tarawera, with lush natural bush and volcanic landscape backdrop. The subtle design brings the outdoors in, inviting you to unwind and soak up the peace and quiet of this tranquil setting. Minutes from this iconic resort you will discover a multitude of activities.

Meals included: Breakfast, Dinner



## Day 3



### Mount Tarawera & Orakei Korako Thermal Explorer with Volcanic Air

Combine the thrill of landing on Mount Tarawera with a flight that includes spectacular aerial views of Rotorua's stunning crater lakes, the renowned Tarawera Falls and the vibrant Waimangu and Wai-O-Tapu geothermal reserves. Leaving Wai-O-Tapu, descend to follow the Waikato River to the hidden valley of Orakei Korako. Once landed, you will ferry across the river and begin your land-based tour. Experience hot springs, gushing geysers and the natural beauty of this geothermal wonderland. The return flight takes in views of farmland and the Paeroa mountain range before flying over Rotorua City and returning to the lakefront pier.

---

### Behind The Scenes Exclusive Tour with National Kiwi Hatchery

This exclusive guided experience is a truly unique opportunity to learn about the world-renowned kiwi hatchery conservation program. You are invited to step 'behind the glass' for an immersive experience to join the hatchery team in a staff-only area to learn about the incubation and chick rearing techniques from global experts. Learn all about New Zealand's intriguing national icon and the efforts of the kiwi husbandry team, see and discover what it takes to hatch and rare chicks, and if you're lucky, see baby chicks in person! Afterwards, take more time to learn in the interactive kiwi burrow and see adult kiwi roam and forage in our purpose-built Nocturnal house.

---



## Te Pō - Indigenous Evening Experience

Indulge in Te Puia's world-famous hāngī buffet dinner, served in the inviting atmosphere of Pātaka Kai Restaurant, Bar & Café. The menu, crafted with the freshest ingredients, offers a delightful array of traditional Māori cuisine. This banquet combines contemporary cuisine with a traditional hāngī (earth-cooked oven meal). The evening's cultural performance will take place in an exquisitely carved meeting house, Te Aronui a Rua. Here, you'll experience a rich showcase of Māori traditions, beginning with a pōhiri (traditional welcome), followed by the melodious harmonies of waiata (song), the powerful rhythms of mōteatea (traditional chant), the graceful artistry of poi, and the intense energy of the haka. As the night draws to a close, savor hot chocolate heated in geothermal water and steamed pudding while basking in the enchanting ambiance of the geyser terrace. Bathed in colored light and surrounded by the mystical steam rising from the earth, this unforgettable evening at Te Puia is a feast for the senses and a celebration of Māori culture.

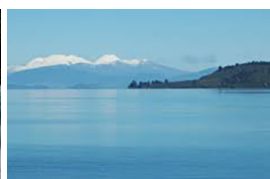
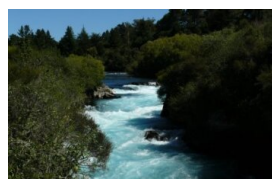
## Your accommodation: Solitaire Lodge

Solitaire Lodge Rotorua, one of New Zealand's premier luxury lodges, enjoys breathtaking views over Lake Tarawera, with lush natural bush and volcanic landscape backdrop. The subtle design brings the outdoors in, inviting you to unwind and soak up the peace and quiet of this tranquil setting. Minutes from this iconic resort you will discover a multitude of activities.

Meals included: Breakfast, Dinner



## Day 4



### Rotorua to Napier

This drive will take you through the thermal region just south of Rotorua. Home to a plethora of unique geothermal attractions including boiling mud pits, natural hot springs and steaming geysers, this area is a must do before you move on to Napier. Notable attractions are Wai-O-Tapu, Waimangu and Craters of the Moon. Continue on to Taupō and marvel at the lake, a giant crater formed following a volcanic eruption in the year 180 CE. As you approach the town, be sure to stop at Huka Falls to view the spectacular sight of hundreds of cubic metres of water spilling every second down the narrow 11 metre drop. For an extra thrill take a jet-boat ride at the base of the falls. Leaving Taupō, follow the road as it climbs the rugged Ahimanawa Range before descending back down the Pacific Coast to art deco coastal township of Napier.

### Napier City

Napier, a coastal gem, is famed for its 1930s Art Deco architecture, the annual Art Deco Weekend, stately Norfolk pines, nearby wineries, and fresh local produce. With a Mediterranean climate and over 2,200 hours of sunshine annually, it boasts a thriving café culture set against stunning heritage buildings. The city center has around 30 cafés within walking distance, while Ahuriri, just beyond Bluff Hill, offers more upscale dining. Marine Parade overlooks the Pacific Ocean and Cape Kidnappers, home to the world's largest mainland gannet colony. Visitors can explore Ocean Spa, the Hawke's Bay Museum, and the National Aquarium of New Zealand. Bluff Hill, a key landmark, provides sweeping views of Napier, Perfume Point, Westshore Beach, and the busy Port of Napier, which exports timber, fruit, and meat worldwide.

In 1931, Napier was devastated by a 7.8-magnitude earthquake, New Zealand's worst natural disaster. Fires ravaged the city. Rebuilding efforts transformed Napier and Hastings into modern cities, while the uplifted Ahuriri Lagoon created much-needed land for expansion.

### Rosewood Cape Kidnappers

With spectacular panoramic views of the Pacific Ocean, nestled among 6,000 acres of rugged coastal farmland, The Farm at Cape Kidnappers offers a multitude of activities within a five-star luxury setting. Offering many comfortable spaces to relax and unwind, including intimate snug, stylish lounges, and outdoor conservatory areas - there is no better way to take in this picturesque landscape. Choose from a range of leisure facilities such as a heated infinity pool and jacuzzi, spa treatments with beautiful forest and ocean views, a world-class golf course and clubhouse and a fully equipped gym, offering yoga, pilates, golf-specific fitness and personal training. The Farm is also home to some of the best trails on the North Island, from independent forest walks to ocean strolls or guided farm tours - pack a picnic and set off on an afternoon of outdoor fun. Also on offer are mountain, bikes, quad bikes and horse treks for the more adventurous traveller.

## Your accommodation: Rosewood Cape Kidnappers

Located in Hawke's Bay, one of New Zealand's most important wine districts, Cape Kidnappers has a rich history. The Farm is a five-star experience set on a 6,000-acre sheep and cattle farm which encompasses land reminiscent of Montana but plunges 800 feet straight into the sea. A championship golf course designed by Tom Doak is just one reason to experience The Farm.

Meals included: Breakfast, Dinner



## Day 5



### Private Luxury Wine Tour including lunch

A tour designed for those who are looking for a more intimate experience of renowned Hawke's Bay wineries. Learn about the local yield and the region's long viticultural history, and indulge in a two course gourmet lunch. Taste classic varieties such as Shiraz, Merlot, Cabernet Sauvignon, Pinot Gris Viognier, Semillon and Riesling. There will also be an opportunity to taste sherry, port and dessert reds.

### Your accommodation: Rosewood Cape Kidnappers

Located in Hawke's Bay, one of New Zealand's most important wine districts, Cape Kidnappers has a rich history. The Farm is a five-star experience set on a 6,000-acre sheep and cattle farm which encompasses land reminiscent of Montana but plunges 800 feet straight into the sea. A championship golf course designed by Tom Doak is just one reason to experience The Farm.

Meals included: Breakfast, Lunch, Dinner



## Day 6



### Napier to Wellington via Kapiti Coast

Journey from the charming Art Deco city of Napier through rolling vineyards and picturesque countryside as you head towards Wellington. Enjoy the scenic drive along the stunning Kapiti Coast, with views of the rugged shoreline and tranquil beaches. As you approach the capital, you'll be greeted by Wellington's vibrant culture, bustling waterfront, and renowned culinary scene. A perfect blend of natural beauty and urban excitement awaits on this unforgettable road trip.

### Wellington

Wellington known in Māori as Te Upoko o Te Ika a Maui is home to New Zealand's centre of government. Often referred to as 'mini Melbourne', this windy city is a melting pot of art, culture, food, and fashion. Quirky laneway bars, underground art shows, and hipster eateries make up its inner-city vibe, while a host of sandy beaches outside the urban bustle bring a cheerful holiday feel. Head to Te Papa Museum for a history lesson and a ticket to one of its many international exhibitions or jump aboard the Wellington Cable Car - the only running funicular railway in the country. For those with an eye for boutique, fashion wander through Cuba St to sample some of the city's best vintage stores. Break for coffee at a hipster cafe and be sure to snap a pic outside the 'Beehive', New Zealand's parliamentary debate chamber. Go behind the scenes at Weta Workshop Experience, the Oscar Award Winning design studio behind Lord Of The Rings, The Hobbit, and Avatar. If you're a foodie at heart, a two-hour round trip to Martinborough is a must-do. Take your time as you wind through spectacular wine country. For an educational day out, learn about New Zealand's native species at Zealandia, the world's first fully-fenced eco-sanctuary and home to over 40 types of endangered and native birds.

### Your accommodation: Bolton Hotel Wellington

The Bolton Hotel offers contemporary apartment-style accommodation in the heart of Wellington. Just steps from the Parliament buildings and central business district, Bolton Hotel is conveniently close to the best of the city's shops, cafes and restaurants and is within walking distance of Wellington's vibrant waterfront.

Meals included: Breakfast



## Day 7



### Return your rental car

Return your rental vehicle to your designated depot before your next adventure.

---

### Interislander Ferry Wellington to Picton with Premium Plus Lounge

The 92 km ferry journey between Wellington and Picton, taking around 3 hours, is hailed as one of the world's most beautiful ferry rides. Departing Wellington Harbour, you'll pass landmarks like Pencarrow Head with New Zealand's oldest lighthouse, Red Rocks' seal colony, and Oterangi Bay, famous for its record wind speed. From the Cook Strait, marvel at views of the Kaikōura Ranges and spot dolphins and seabirds. An hour of the trip winds through the stunning Marlborough Sounds, featuring bush-clad mountains, tranquil bays, and crystal-clear waters—a photographer's dream. The journey concludes in the charming town of Picton at the end of Queen Charlotte Sound. When not soaking up the views from the deck, relax in the Premium Plus lounge, offering complimentary drinks, snacks, internet, and luxurious seating for the most comfortable way to cross the Cook Strait.

---

### Collect Rental Car

This tour's from price includes an intermediate-sized vehicle, setting you up for comfortable travels. Yet, we understand every adventure is unique! Feel free to select the perfect wheels from our incredible collection of rental cars, spanning from economy hatchbacks to premium SUVs.

---

### Picton

Picton is a picturesque portside town at the top of the South Island. Gateway to the forest, marine and island attractions of the Marlborough Sounds, Picton is built around a sheltered harbour. Home to cafes, restaurants and galleries it also has a floating maritime museum and aquarium. Picton is also the starting point for Queen Charlotte Track, one of New Zealand's leading hiking trails.

---

### Your accommodation: Sennen House, Picton

This magnificent 2-storey villa is one of Picton's original colonial homesteads. Extensively restored, Sennen House offers guests a truly unique accommodation experience, set in 5 acres of National Trust protected native forest and grounds, yet only a short stroll to Picton's restaurants, shops, ferries and foreshore.

Meals included: Breakfast



---

## Day 8



### Seafood Odyssey Cruise with Marlborough Tour Company

Enjoy the sights and sounds of the Queen Charlotte Sound with seemingly endless bays and coves to explore and different scenery around each corner. Seafood Odyssey Cruise offers a unique range of sightseeing, birdlife and wildlife. Learn about the Marlborough Sounds area, the local seafoods grown and enjoy a fabulous seafood tasting on board matched to stunning Marlborough Sauvignon Blanc.

---

### Your accommodation: Sennen House, Picton

This magnificent 2-storey villa is one of Picton's original colonial homesteads. Extensively restored, Sennen House offers guests a truly unique accommodation experience, set in 5 acres of National Trust protected native forest and grounds, yet only a short stroll to Picton's restaurants, shops, ferries and foreshore.

Meals included: Breakfast, Lunch





## Day 9



### Picton to Christchurch

From Picton you cross the hills of the Marlborough ranges as you head towards one of the most spectacular coastlines of the South Island, the Kaikōura Coast. The road hugs the shore for around 50 kilometres and offers many chances to view native wildlife such as seabirds and New Zealand fur seals. To the east are the turquoise waters of the South Pacific Ocean and to the west are the towering Kaikōura Ranges. Kaikōura Township is a bustling place with many cafes, restaurants and shops, but the main reason for visiting here is the wildlife. Whale Watch Kaikōura is New Zealand's only marine-based whale-watching company offering visitors an exciting up-close encounter with the Giant Sperm Whale at all times of the year. The drive from Kaikōura to Christchurch continues to follow the spectacular coastline before heading inland and through North Canterbury's major wine region, the Waipara Valley to arrive in Christchurch City.

### Christchurch

Christchurch known in Māori as Ōtautahi, is the largest metro area in the South Island. Commonly referred to as New Zealand's "Garden City", Christchurch is home to one of the biggest public parks in the country, and beautiful botanic gardens. The city was hit with devastating earthquakes in 2010 and 2011, now the city crosses the line between its English heritage and a new modern architecture. To take in some arts and culture, pay a visit to the Canterbury Museum or the Christchurch Art Gallery. Take a step back in time with a tram around the city or punt along the Avon River. If tasting your way around the city is your means of travel, try out a cultural eating tour. A short drive from the CBD will lead you to the outskirts of the Banks Peninsula beachside suburb of Sumner or through the tunnel to Lyttleton Harbour which hosts fantastic markets on Saturday mornings.

### Dinner onboard the Christchurch Restaurant Tram

A truly unique dining experience in the heart of Christchurch. You'll board New Zealand's only dining tram for an unforgettable moving four-course restaurant experience. Enjoy a curated fine dining-style menu while taking in the city sights on your journey through the streets of central Christchurch. This experience includes a meal with multiple courses as the tramway route passes New Regent Street, the Avon River, High Street, and Victoria Square.

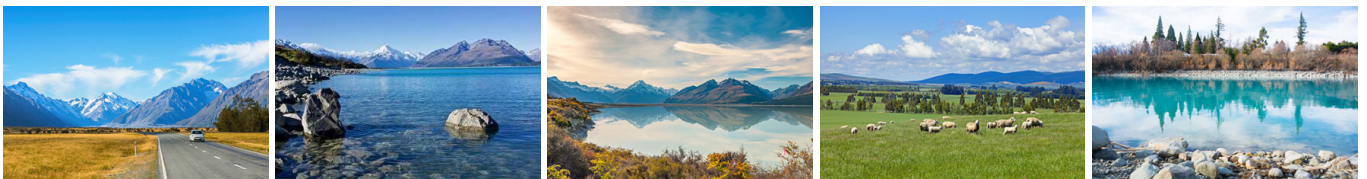
### Your accommodation: The George Hotel

The George is the essence of supreme comfort. The award-winning 5 star hotel is opposite Hagley Park and just a few minutes stroll from the Botanic Gardens. It also has an award-winning restaurant, 50 Bistro onsite.

Meals included: Breakfast, Dinner



## Day 10



### Christchurch to Aoraki-Mt Cook National Park

Drive through the heart of the South Island, crossing the vast Canterbury plains. Catch your breath in Geraldine before continuing through Fairlie. Ascending Burkes pass you'll come to the picturesque town of Lake Tekapo. Follow the road and take in the view of Aoraki-Mt Cook (New Zealand's tallest mountain) from the shores of Lake Pukaki, known for its glacier fed turquoise blue colour. Continue along the lake to your final destination Aoraki-Mt Cook Village.

## Aoraki-Mt Cook National Park

At 3754m Aoraki-Mt Cook is Aotearoa-New Zealand's highest mountain, located deep in the heart of the Southern Alps. As well as its impressive beauty, Aoraki-Mt Cook National Park is also home to a huge range of awe-inspiring sights and activities. Take to the air with Mt Cook Ski Planes for a scenic flight that includes a glacier landing. At around 27 kilometres long the Tasman Glacier is New Zealand's longest and a Glacier Explorers tour allows you to see its unique features up close.

There are many short hikes in and around the park and these are well signposted around the village. Those with an interest in the night sky should take a Big Sky Stargazing tour with the Hermitage Hotel. The region is considered to have one of the clearest night skies in the world and is one of the few gold-rated dark sky reserves worldwide.

Visit the Sir Edmund Hillary Alpine Centre for insight into this region's mountain climbing history. You'll also learn of Sir Ed's incredible achievements and his dedication to helping others around the world.

---

### The Panorama Room 3-course Dinner with The Hermitage Hotel

Since first opening its doors in 1969, The Panorama Room has gained a reputation as being one of the best restaurants in New Zealand. This reputation is reflected in the numerous awards the restaurant has received over the years. A simple philosophy of using just the freshest, local ingredients, in particular from New Zealand's South Island, is still the secret to its success today. The menu has a strong international influence and reflects both the establishment's taste and the fact that most of the chefs have travelled and worked widely throughout the world.

---

### Your accommodation: Hermitage Hotel, Aoraki Wing Premium Plus

Experience the best views in the park from the spacious top floor rooms of the magnificent Hermitage Hotel.

Meals included: Breakfast, Dinner



---

## Day 11



### Mt Cook Helicopter Glacier Highlights Scenic Flight

Be captivated by the rugged mountain terrain and ever changing glacial landscape of the Southern Alps. Discover the stunning ice formations of the Hochstetter Icefall as you fly beneath the east face of Aoraki Mt Cook and along the length of the Tasman Glacier. This flight allows you to truly savour the beautiful scenery and pristine alpine environment of Aoraki Mt Cook National Park. It is important you read and understand the risks associated with this activity. For more information please see [here](#).

---

### Big Sky Stargazing

Mt Cook is far from the city lights and therefore has some of the darkest skies in New Zealand, perfect for viewing the night sky! Their fully trained guides are delighted to show you the beautiful southern night sky using the naked eye, state-of-the-art astronomy telescopes, and binoculars at the outdoor viewing platform. If the weather is not favourable, then there will be an indoor alternative featuring New Zealand's first full-dome digital Planetarium, high-definition video images on a suspended 9m wide x 4.5m high full dome. Unleash your imagination as you discover the night sky, including the Southern Cross, seasonal ecliptic objects, planets, star clusters, moons, distant galaxies, and even our very own galaxy, the spectacular Milky Way!

---

### SUGGESTED ACTIVITY - Glacier Explorers

Experience 500-year-old icebergs up close on the Aoraki-Mt Cook terminal lake. The Glacier Explorers tour is the only one of its kind in New Zealand and one of only three in the world! Very few glaciers terminate into lakes and even fewer of them are accessible. See towering ice cliffs and floating icebergs from the safety of a specially designed boat. These boats provide a safe way to view unseen and inaccessible areas of New Zealand's largest glacier The Tasman.

---

### Your accommodation: Hermitage Hotel, Aoraki Wing Premium Plus

Experience the best views in the park from the spacious top floor rooms of the magnificent Hermitage Hotel.

Meals included: Breakfast





## Day 12



### Aoraki Mt Cook National Park to Queenstown

Leaving the alpine region of Aoraki Mt Cook, you'll travel through the lakeside town of Twizel, then a little further to Omarama the gliding capital of New Zealand. Continue on over the Lindis Pass, one of New Zealand's highest roads with a summit of 971 metres. Arrive in the quaint village of Tarras, then continue on a short way to the historic Bendigo Reserve, one of Otago's original gold mining settlements. Follow the road to Cromwell, and keep going through the sheer cliffs of the Kawarau Gorge towards Gibbston, one of New Zealand's premier wine growing regions. See the historic Kawarau Bridge where you can bungy jump or relax and watch others take the plunge. Approaching Queenstown, the Remarkables mountain range comes into view as you arrive into the adventure capital of New Zealand.

### Queenstown

Queenstown known in Māori as Tāhuna, is home to many adrenaline-inducing activities. Nestled on the shores of Lake Wakatipu, this alpine town has very distinct seasons, and most adrenaline-filled activities can be accessed year-round. Queenstown is home to jet boating, bungy jumping, rafting, skydiving, paragliding, and even indoor thrills. If you want that rush - head out on the Shotover Jet, dive off the Nevis Bungy, freefall on the Canyon Swing, or Zip line the Gondola. While arguably the brightest gem in New Zealand's crown, Queenstown offers far more than an action-packed getaway. If you're looking for a slightly slower pace, there are plenty of recreational activities, including hiking and biking trails to explore, guided tours, boat cruises, scenic flights, or spa and wellness options to help you get away. Head to the lakefront, eat at one of the al fresco eateries, and soak up the local vibes; catch a ride on the iconic 100-year-old steamship the TSS Earnslaw; or take the Skyline Gondola and enjoy bird's-eye views of the Remarkables mountain ranges and Lake Wakatipu. Pack a picnic and go for a hike, only 20 minutes from Central Queenstown, Coronet Peak opens for summer sightseeing. You can ride the Peak Gondola to the top for panoramic views and hike the trails, or go for a bike ride on many excellent biking trails. In winter, Queenstown becomes a world-class winter resort, with four ski areas and a range of activities, bars, restaurants, and ways to relax and unwind.

### Matakauri Lodge

Spectacularly situated on Lake Wakatipu, Matakauri Lodge offers stunning panoramic views of the Remarkables, Cecil and Walter Peak mountain ranges. Just a short seven minute drive for the centre of Queenstown, Matakauri Lodge is a relaxing alpine retreat tucked into one of the world's most beautiful landscapes. The main lodge consists of a spacious lounge, dining and living areas complimented by large open fires. It also has a large patio, library and courtyard - all comfortable spaces to relax in. You can also take a swim in the pool or relax in the Jacuzzi, both offering spectacular views of the lake and mountainside.

### Your accommodation: Rosewood Matakauri Queenstown

Spectacularly situated on Lake Wakatipu, Matakauri Lodge offers stunning views from every angle of the Remarkable, Cecil and Walter Peak mountain ranges. Just seven minutes from Queenstown the lodge provides an alpine lakeside retreat nestled in one of the world's most serenely beautiful landscapes.

Meals included: Breakfast, Dinner



## Day 13



### Half Day Gibbston Wine Tour with Black NZ

Enjoy wine tastings at 4 or more vineyards in the Gibbston region with an informative and entertaining commentary about the gold mining history and pioneers of the wine industry. Can be combined with a visit to the famous A.J.Hackett Kawarau Bungy Bridge for a leap of faith.

### Gondola and 3 Luge Rides with Skyline Queenstown

In the heart of Queenstown, located 450 metres above town in the Ben Lomond Scenic Reserve is the Skyline Complex. A gondola ride to the summit makes for awe-inspiring views of the city surround. Arrive at the complex and wander the outside viewing decks for a picture perfect outlook. Then onto the Luge! The 800 metre luge track offers an exhilarating journey through banked corners, tunnels and dippers.

### Your accommodation: Rosewood Matakauri Queenstown

Spectacularly situated on Lake Wakatipu, Matakauri Lodge offers stunning views from every angle of the Remarkable, Cecil and Walter Peak mountain ranges. Just seven minutes from Queenstown the lodge provides an alpine lakeside retreat nestled in one of the world's most serenely beautiful landscapes.

Meals included: Breakfast, Dinner



---

## Day 14



### Fiordland's Finest Combo FLY - CRUISE - HELI with The Helicopter Line

Experience Milford Sound / Piopiotahi by taking to the skies in two different types of aircraft: one way by fixed-wing plane and the other by helicopter. This adventure includes a stunning 2-hour cruise and is a bucket list experience not to be missed! It is important to read and understand the risks associated with this activity. A full risk disclosure can be found [here](#).

---

### Your accommodation: Rosewood Matakauri Queenstown

Spectacularly situated on Lake Wakatipu, Matakauri Lodge offers stunning views from every angle of the Remarkable, Cecil and Walter Peak mountain ranges. Just seven minutes from Queenstown the lodge provides an alpine lakeside retreat nestled in one of the world's most serenely beautiful landscapes.

Meals included: Breakfast, Dinner



---

## Day 15



### Return your vehicle to Queenstown Airport

Explore more of Queenstown before dropping your rental car at the airport depot and continuing your onward journey.

---

### Return your rental car

Return your rental vehicle to your designated depot before your next adventure.

---

### Farewell from Aotearoa-New Zealand

Bid farewell to Aotearoa-New Zealand, taking with you unforgettable memories of its breathtaking landscapes and incredible adventures. In Maori, it is said mā te wā, which is not goodbye, it is see you soon!

## Tour details

Departures:	Daily
Tour type:	Self Drive Tour (FTNZ ONLY)
Starts:	Auckland
Finishes:	Queenstown
Tour length:	15
Accommodation:	Luxury Lodges
Car/transport type:	

---

## Included activities

Includes	12 dinners
Includes	All breakfasts
Includes	Private airport transfers
Includes	Interislander ferry crossing (Premium Plus Lounge)
Includes	Hawkes Bay private luxury wine tour
Includes	Cape Kidnappers Gannet Beach Adventures
Includes	Marlborough gourmet wine tour
Includes	Mt Cook Ultimate Scenic Flight
Includes	Exclusive helicopter tour to Milford Sound including cruise

---

## Accommodation summary

Day 1	The Hotel Britomart Auckland
Day 2	Solitaire Lodge
Day 3	Solitaire Lodge
Day 4	Rosewood Cape Kidnappers
Day 5	Rosewood Cape Kidnappers
Day 6	Bolton Hotel Wellington
Day 7	Sennen House, Picton
Day 8	Sennen House, Picton
Day 9	The George Hotel
Day 10	Hermitage Hotel, Aoraki Wing Premium Plus
Day 11	Hermitage Hotel, Aoraki Wing Premium Plus
Day 12	Rosewood Matakauri Queenstown
Day 13	Rosewood Matakauri Queenstown
Day 14	Rosewood Matakauri Queenstown