



## The Southern Circuit

From Christchurch this tour takes you along the foothills of the Southern Alps to Mt. Cook National Park. It's then onto Dunedin where you have a whole day to discover the unique wildlife of the Otago Peninsula. Continue south to Te Anau and Milford Sound for you Real Journeys Nature Cruise, then to the 'Adventure Capital' of Queenstown and on to the alpine village of Wanaka where you have time to explore the natural beauty of the region and enjoy the many activities on offer. On your return to Christchurch you journey up the West Coast, with the highlight being the Fox and Franz Josef Glaciers which you can experience during a heli-hike or scenic flight if you choose. You'll return to Christchurch aboard the world famous TranzAlpine Scenic Train.

Starts in: Christchurch  
 Finishes in: Christchurch  
 Length: 13days / 12nights  
 Accommodation: Motels  
 Can be customised: Yes

This itinerary can be customised to suit you perfectly. We can add more days, remove days, change accommodations, mix it up, add activities to suit your interests or simply design and create something from scratch. Call us today to get your custom New Zealand itinerary underway.



### Inclusions:

Includes: Late model rental cars  
 Includes: Fully inclusive rental car insurance (excess may apply)  
 Includes: Unlimited kms  
 Includes: Afterhours emergency support while touring  
 Included activity: Private Transfer Christchurch International Airport to Christchurch Accommodation  
 Included activity: Electronic Travel Guide and In-Country Support App  
 Included activity: The Visitor Promise - Cultural Learning Course  
 Included activity: TranzAlpine Scenic Train: Greymouth to Christchurch  
 Included activity: Shared Transfer from Christchurch Train Station to Christchurch CBD  
 Accommodation with Christchurch Touring Company  
 Included activity: Private Transfer from Christchurch Accommodation to Christchurch Airport with Christchurch Touring Company  
 Included activity: Milford Sound Cruise with Real NZ - Lunch Included  
 1 lunch

## Day 1



### Private Transfer Christchurch International Airport to Christchurch Accommodation

On arrival, you will be met by a private driver and transferred to your Christchurch accommodation.

### Welcome to Christchurch City

Christchurch New Zealand's garden city is steadily being transformed into a vibrant urban destination. Encompassing a large green belt, it is known for its wide tree lined avenues and lush gardens. A great way to explore the city or easy way to see the sights or ride the historic trams across town to the renowned botanic gardens and the unique cardboard Transitional Cathedral, that's right it is built of cardboard!

### SUGGESTED ACTIVITY - Discover Christchurch Afternoon Tour

A half-day sightseeing tour of Christchurch highlighting both the damage to the city inflicted by several large earthquakes in 2010 and 2011 and the rebuild which is currently in progress, together with the surviving beauty of the city and the historical landmarks. Experience the grand architecture, beautiful gardens, and scenic viewpoints on a half-day city tour of Christchurch.

### Your accommodation: Quest on Cambridge

Quest on Cambridge serviced apartment-style hotel rooms offer guests a relaxed and comfortable Christchurch accommodation experience. Each room has an open-plan living area, a fully equipped kitchen, and natural light. Quest on Cambridge is a short walk from the south shopping centre and to the Botanic Gardens.



## Day 2



### Collect Rental Car

This tour's from price includes an intermediate-sized vehicle, setting you up for comfortable travels. Yet, we understand every adventure is unique! Feel free to select the perfect wheels from our incredible collection of rental cars, spanning from economy hatchbacks to premium SUVs.

### Christchurch to Aoraki-Mt Cook National Park

Drive through the heart of the South Island, crossing the vast Canterbury plains. Catch your breath in Geraldine before continuing through Fairlie. Ascending Burkes pass you'll come to the picturesque town of Lake Tekapo. Follow the road and take in the view of Aoraki-Mt Cook (New Zealand's tallest mountain) from the shores of Lake Pukaki, known for its glacier fed turquoise blue colour. Continue along the lake to your final destination Aoraki-Mt Cook Village.

### SUGGESTED ACTIVITY - Glacier Explorers

Experience 500-year-old icebergs up close on the Aoraki-Mt Cook terminal lake. The Glacier Explorers tour is the only one of its kind in New Zealand and one of only three in the world! Very few glaciers terminate into lakes and even fewer of them are accessible. See towering ice cliffs and floating icebergs from the safety of a specially designed boat. These boats provide a safe way to view unseen and inaccessible areas of New Zealand's largest glacier The Tasman.

### Your accommodation: Mt Cook Motel

Mt Cook Motel, nestled in the heart of Mt. Cook Village, offers spacious self-contained units that provide comfort and convenience. Each unit is surrounded by breathtaking alpine mountain views, making it the perfect retreat for nature lovers and adventurers alike.





## Day 3



### Aoraki Mt Cook National Park to Dunedin

Leave Aoraki Mt Cook National Park and travel past Twizel, one of the locations for the Lord of the Rings films. Go through Omarama, the gliding capital of New Zealand. Continue down the Waitaki Valley follow the hydro power generating system to the rural town of Kurow, home to the divine Valli Wines. Stop for a sip or continue on to the east coast. Stretch your legs in Oamaru, known for its white stone buildings constructed with the local Oamaru Stone and Steampunk influence. If you were a little late off the mark this morning you may get the chance to see the blue penguins come ashore at dusk. Continue south down the coast to Moeraki, and take a detour towards the beach to see the Moeraki Boulders, a unique geological feature well worth a look. As you arrive in Dunedin, take in the city's Edwardian and Scottish heritage reflected in the buildings around the city centre The Octagon.

### Your accommodation: Motel on York

Motel on York is located in the heart of Dunedin city. The property offers superior accommodation only 300 metres away from cafes and restaurants.



## Day 4



### Explore Dunedin and the Otago Peninsula

Known as the Edinburgh of the South, Dunedin City has a heavy Scottish influence. Surrounded by rugged coastal plains and windswept beaches it's home to an eclectic mix of historical and modern architecture as well as industrial technology. Renowned for its Flemish Baroque-inspired 'gingerbread house' Railway Station, this university town is bustling with life. Head to the Saturday farmers market held in the aforementioned railway grounds for a taste of organic produce, handmade crepes and local honey. Explore the many cafes and wine bars in The Octagon, then continue on a self-guided walking tour of the internationally acclaimed Street Art dotted around the city. Drive to the coast and watch the freighters passing in the distance while you sunbathe, or hire a mountain bike and test your legs on one of the many trails available in the area. For a more immersive historical experience, follow the coast to New Zealand's only castle, Larnach Castle. On your way back be sure to head to the Otago Peninsula to see the largest mainland Albatross colony in the world.

### SUGGESTED ACTIVITY - Monarch Wildlife Cruise from Wellers Rock

An unforgettable experience viewing rare and fascinating wildlife. Board the Monarch Boat and take in the fascinating sight of the Northern Royal Albatross as it comes into nest on the spectacular cliffs of Taiaroa, Otago Peninsula. You'll also see eight other species of birds including sooty shearwaters and petrels as well as sea lions and fur seals and if you're lucky dolphins and whales.

### SUGGESTED ACTIVITY - Penguin Tour with The Opera

Learn about the endangered Yellow Eyed Penguin when you visit The Opera - Otago Peninsula Eco Restoration Alliance, a private conservation reserve dedicated to ensuring the survival of this unique species. The project is entirely funded by guided tours which allow the conservation team to engage in habitat restoration, predator control, a research program, and an on-site rehabilitation facility.

On your tour, you will learn about the issues the Yellow Eyed Penguin faces, their life cycle, and how the project is carried out. Your experience will begin in a theatre before moving to the rehabilitation center where penguins may be seen up close. You'll take a short bus trip over to the reserve and be led on foot approx 2km by your guide through a system of covered trenches to view hides that allow access to the living and breeding habitat of this very shy bird without disturbing them. There is also an opportunity to meet other animals that reside in the reserve including fur seals, sea lions, and several species of shore and land birds.

### Your accommodation: Motel on York

Motel on York is located in the heart of Dunedin city. The property offers superior accommodation only 300 metres away from cafes and restaurants.



---

## Day 5



### Dunedin to Te Anau (via Invercargill)

The drive to Te Anau takes you through classic Southland farming scenery. Head off-the-beaten-track today and follow the coastline instead of the inland route. Go through The Catlins area and be sure to take a detour to Kaka Point to view its majestic cliffs and pounding surf. If time permits, keep driving towards Nugget Point, iconic for its steep headland with a lighthouse perched atop. Continue through Invercargill to Riverton and Colac Bay, and then head north to Manapouri. From here you can embark on a day or overnight cruise to the remote Doubtful Sound, renowned for its natural beauty. Just a short way further will bring you to your lakeside destination of Te Anau, gateway to Fiordland National Park and Milford Sound.

---

### SUGGESTED ACTIVITY - Te Anau Glowworm Caves with RealNZ

Begin your Te Anau Glowworm experience with a scenic cruise across Lake Te Anau on board the luxury catamaran, Luminosa, to the western side of the lake. On arrival, you'll enter the caves through Cavern House, where informative displays detail the history of this 12,000 year old underground network. You'll then explore by limestone pathway while your guide points out hidden whirlpools, sculpted rock formations, and a rushing underground waterfall. See a magical display of thousands of glowworms as you glide through the darkness in a small boat.

---

### Your accommodation: Lakefront Lodge

Stylish self-contained motel units less than a minute walk from Te Anau Lakefront. Enjoy a close walk to shops, cafes and restaurants.



---

## Day 6



### Te Anau to Milford Sound, returning to Te Anau

The magnificent Milford Road leading to Milford Sound offers some of the most beautiful and iconic scenery in the country. Countless photo opportunities mean this drive should not be rushed. From crystal clear lakes and towering mountains to lush glacier-formed meadows, this area is abundant with picture-perfect scenes. Continue on through the Homer Tunnel, an engineering marvel at 1219 meters long. Arriving in the village of Milford, you will be greeted with an amazing view of Mitre Peak. A day cruise into the heart of the sound is not to be missed. You'll learn about how this magnificent area was formed and experience the wonder of the falls that line the Fjord before back-tracking the way you came.

---

### Milford Sound Cruise with Real NZ - Lunch Included

Get up close and personal with Milford Sound on a leisurely cruise of this spectacular fiord. From thundering waterfalls to sky-high mountains to lush rainforests, Milford has it all. Experience the spray of a waterfall as you cruise close to sheer rock faces. Informative, participative and relaxed, this is the perfect way to experience Milford Sound to the fullest.

## SUGGESTED ACTIVITY - Milford Sound Lunch Cruise on the Fiordland Jewel with Fiordland Discovery

Embark on an unforgettable Milford Sound adventure aboard a boutique catamaran, the Fiordland Jewel. Designed for ultimate comfort and breathtaking views, our small group cruise offers cozy lounges, dining booths, and panoramic sea vistas from the main saloon or the outdoor dining area. Regardless of the weather, you'll be immersed in the stunning scenery and nature that surround you. Our knowledgeable crew will share fascinating stories and point out wildlife such as seals, penguins, and dolphins along the way. Enjoy a delicious lunch prepared by the onboard chef as you sail through the fiord. With ample outdoor space, you can fully experience the tranquillity and beauty of Milford Sound.

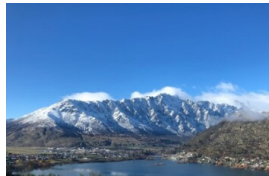
### Your accommodation: Lakefront Lodge

Stylish self-contained motel units less than a minute walk from Te Anau Lakefront. Enjoy a close walk to shops, cafes and restaurants.

Meals included: Lunch



## Day 7



### Te Anau to Queenstown

Journey across expansive tussock lands en route to Queenstown. Pass through Mossburn, renowned as the deer capital of New Zealand, and continue through the picturesque Southland countryside. As the road begins to trace the edge of Lake Wakatipu, marvel at the breathtaking views from the Devil's Staircase. Finally, approach Queenstown, the adventure capital of New Zealand, with the Remarkables mountain range standing majestically in the backdrop.

### Your accommodation: Scenic Suites Queenstown

Scenic Suites Queenstown offers guests exquisite style and comfort, with a selection of rooms having spectacular views over Lake Wakatipu and the Southern Alps. The hotel prides itself on its 4-star hospitality that will make your stay in Queenstown even more memorable.



## Day 8



### Queenstown to Wanaka

Leaving Queenstown you'll drive over New Zealand's highest sealed road, the Crown Range before arriving into the resort town of Wanaka.

### Wānaka

Nestled on the shores of one of New Zealand's largest lakes and framed by the stunning Southern Alps. Wānaka is an alpine village that perfectly blends adventure, breathtaking scenery, and a laid-back vibe. In winter, Wānaka transforms into a bustling hub as snow sports enthusiasts flock to its renowned ski fields, Treble Cone and Cardrona, as well as cross-country at Snow Farm. As the gateway to Mt Aspiring National Park, it offers endless opportunities for hikers, with trails winding through remote wilderness, majestic peaks, and serene river valleys. Closer to town, you'll find a network of scenic walking tracks, such as the popular Mount Iron Track, and from the lakefront, it is a short walk to "That Wanaka Tree". For thrill-seekers, Wānaka is an adrenaline playground, offering skydiving, paragliding, downhill biking, rock climbing, and jet boating.



## SUGGESTED ACTIVITY - Wanaka Wine Tours Boutique Central Otago Wine Trail

This small group wine tour (maximum 8) offers a relaxed and personal introduction to the wines and scenery of the Central Otago region. This tour is a great way to explore award-winning vineyards hidden amongst the rugged landscape of Central Otago. Visit and enjoy tastings at 4 Central Otago vineyards including a delicious mid-afternoon platter to enjoy with your tastings. You'll also discover the history of the region with a visit to Old Cromwell Town, a charming heritage precinct that has been revitalised into a boutique arts and crafts village.

### Your accommodation: Clearbrook Motel and Serviced Apartments

Clearbrook offers luxury apartment style and townhouse accommodation options and is located just metres from Wanaka's main street and its majestic lake front.



## Day 9



### Matukituki Valley

The Matukituki Valley sits to the west of Wanaka, just around a 1 hour drive that skirts the lake passing through Glendhu Bay. Following the Matukituki River the road travels through lush farmland crossing river fords before you arrive at Raspberry Creek Hut. From here walking tracks to suit every ability and time frame are available. The river walk follows the course of the Matukituki along gentle rolling farmland. One of the more popular walks is the Rob Roy Glacier hike - a medium difficulty walk of around 4 hours return, through beech forest and alpine vegetation and spectacular views of the Rob Roy Glacier.

## SUGGESTED ACTIVITY - Jet Boat and Wilderness Walk with Wanaka River Journeys

The Matukituki River is one of New Zealand's great jet boating rivers. Powerful and braided, the Matukituki flows from the glaciers and mountains of the Mount Aspiring National Park, part of Te Wahipounamu World Heritage area. Travel past Lord of The Rings film locations beneath stunning views of Mount Aspiring and Glaciers on this half day, glacier focused jet boat journey. During several photo stops on the river, learn from your guide how this amazing landscape was carved by ice and of Māori heritage special to this area. Deep in the mountains, disembark for a 50 minute wilderness walk into native beech forest, beneath the towering mountains and waterfalls of the Matukituki Valley. This is a great introduction to the New Zealand wilderness while walking easy terrain suitable for people of all ages. It is important you read and understand the risks associated with this activity. For more information please see [here](#).

## SUGGESTED ACTIVITY - Wild Hills 4WD Safari with Ridgeline Adventures

Journey through West Wanaka High Country Station on this spectacular 4WD adventure with Ridgeline Adventures. With jaw-dropping mountain top scenery for days, gain an in-depth insight into the fascinating local history, farming life and predator control conservation projects. Go behind the scenes of a genuine New Zealand High Country Farm, West Wanaka Station and get up close to farm animals including Red Deer, Cattle and Sheep. On this tour, you'll have the opportunity to give back by helping the Ridgeline Adventure's Predator control conservation project and take an optional easy alpine meadow and lakeside forest walks (20 minutes each). Enjoy some freshly brewed coffee and famous fruit cake at their Alpine cafe, before the chance to take a dip in the crystal clear lake and river. This is a great adventure the whole family will enjoy.

### Your accommodation: Clearbrook Motel and Serviced Apartments

Clearbrook offers luxury apartment style and townhouse accommodation options and is located just metres from Wanaka's main street and its majestic lake front.



## Day 10



### Wanaka to Franz Josef

The route follows the shores of Lakes Wanaka and Hawea before you enter the village of Makarora, the gateway to Mt. Aspiring National Park. The Blue Pools, just outside Makarora, are a wonderful 30-minute walk through pristine native beech forest. Descending into Mt. Aspiring National Park and towards the Haast Pass, crashing rivers and waterfalls are around every corner. Crossing the Haast River you are now truly on the wild West Coast, a 600-kilometre stretch of bush, rainforest, and podocarp forest.

Paringa Salmon Farm is a great halfway stop to stretch your legs, feed the fish, and stop for lunch or refreshment.

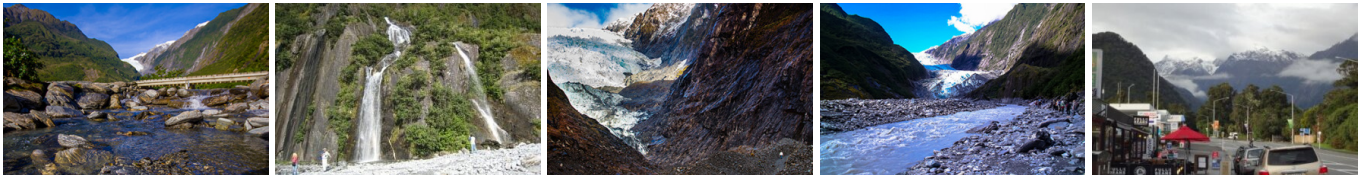
First Fox Glacier welcomes you to the glacier region and Franz Josef township is just a further 45 minutes' drive over the impressive Fox Hills.

### Your accommodation: Punga Grove Motel & Suites

Punga Grove is right in the heart of Franz Josef Glacier village stylish accommodation in a beautiful rainforest setting.



## Day 11



### Explore Franz Josef

Franz Josef is a small yet lively town in the heart of New Zealand's West Coast, best known for its spectacular 12 km-long glacier. The township is surrounded by lush, rainforest-clad mountains and has a vibrant atmosphere with plenty to explore. A variety of scenic walking trails offer incredible views of the glacier, but for a truly up-close experience, a licensed helicopter tour is the only way to set foot on the ice. Beyond the glacier, unwind in the rejuvenating Hot Pools or visit the West Coast Wildlife Centre to spot rare kiwi birds. If you're in the mood for a more relaxed day, the township is home to charming souvenir and gift shops, as well as great dining spots like SnakeBite Brewery and King Tiger. Whether you're chasing adventure or relaxation, Franz Josef is a stunning blend of wild beauty and welcoming hospitality.

### SUGGESTED ACTIVITY - Twin Glacier Scenic Helicopter Flight with The Helicopter Line

A spectacular scenic flight soaring over two of New Zealand's most famous glaciers, Fox and Franz Josef. Landing at the head of one and view the incredible sight of this frozen river as it winds its way through ancient carved valleys. It is important to read and understand the risks associated with this activity. A full risk disclosure can be found [here](#).

### Your accommodation: Punga Grove Motel & Suites

Punga Grove is right in the heart of Franz Josef Glacier village stylish accommodation in a beautiful rainforest setting.



## Day 12



## Franz Josef to Greymouth Train Station

Head north along the mighty West Coast highway you pass through ancient temperate rainforests while getting sneak peeks of the wild coast beach occasionally. Whataroa is the next town where you can see one of the world's rarest birds, the Kōtuku - White Heron. The Kōtuku nest at the Waitangi Roto Nature Reserve, only accessible with a guided tour from October to March. The next town is Ross which is the site of an old gold mining settlement where the local information centre offers you the chance to pan for gold. Hokitika is a great place to explore craft and gift stores and head to the coast and take in the endless sea views. The Pounamu-Greenstone on offer in Hokitika is probably some of the best you will see in the country. Continue on to Greymouth, the largest town on the West Coast and the starting point for the next leg of your journey the TranzAlpine Scenic Train. Drop your rental car at the Greymouth Train Station depot located at the train station building before boarding your train to Christchurch.

---

## TranzAlpine Scenic Train: Greymouth to Christchurch

Considered one of the world's great train journeys, the TranzAlpine Scenic Train takes you from Greymouth to Christchurch. Travel across the South Island from the west to the east coast through Arthur's Pass National Park. From the comfort of your carriage see lush beech forest, deep river valleys and the spectacular peaks of the Southern Alps. Descend to the windswept Canterbury Plains before arriving in the city of Christchurch.

---

## Shared Transfer from Christchurch Train Station to Christchurch CBD Accommodation with Christchurch Touring Company

On arrival at the Christchurch railway station, you will be met by a driver and transferred to your Christchurch accommodation.

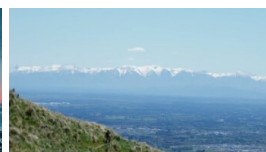
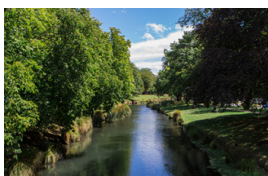
---

### Your accommodation: Quest on Cambridge

Quest on Cambridge serviced apartment-style hotel rooms offer guests a relaxed and comfortable Christchurch accommodation experience. Each room has an open-plan living area, a fully equipped kitchen, and natural light. Quest on Cambridge is a short walk from the south shopping centre and to the Botanic Gardens.



## Day 13



## Private Transfer from Christchurch Accommodation to Christchurch Airport with Christchurch Touring Company

A private transfer will collect you from your accommodation and transfer you to Christchurch Airport in time for your departing flight.

---

## Farewell from Aotearoa-New Zealand

Bid farewell to Aotearoa-New Zealand, taking with you unforgettable memories of its breathtaking landscapes and incredible adventures. In Maori, it is said mā te wā, which is not goodbye, it is see you soon!

---



## Tour details

Departures:	Daily
Tour type:	South Island Self Drive
Starts:	Christchurch
Finishes:	Christchurch
Tour length:	13
Accommodation:	Motels
Car/transport type:	

---

## Included activities

Includes	Private train station transfers
Includes	Private airport transfers
Includes	TranzAlpine Train from Greymouth to Christchurch
Includes	Real Journeys Milford Sound Cruise

---

## Accommodation summary

Day 1	Quest on Cambridge
Day 2	Mt Cook Motel
Day 3	Motel on York
Day 4	Motel on York
Day 5	Lakefront Lodge
Day 6	Lakefront Lodge
Day 7	Scenic Suites Queenstown
Day 8	Clearbrook Motel and Serviced Apartments
Day 9	Clearbrook Motel and Serviced Apartments
Day 10	Punga Grove Motel & Suites
Day 11	Punga Grove Motel & Suites
Day 12	Quest on Cambridge